



Brainerd Public Schools

Opportunity. Innovation. Success.

Board of Education Meeting

Monday, November 13, 2017

6:00 PM



Blueprint 181

Investing. Growing. Leading.

Comprehensive Facility Planning Update: 11-13-17

Facility Presentation Outline

- **Comprehensive Facility Goal**
- **Eight District Facility Objectives**
- **Six-Phase Process: Communications**
- **Workflow Chart**
- **Engagement Process Findings**
- **Architectural Renderings**

Our Overall Facilities Goal

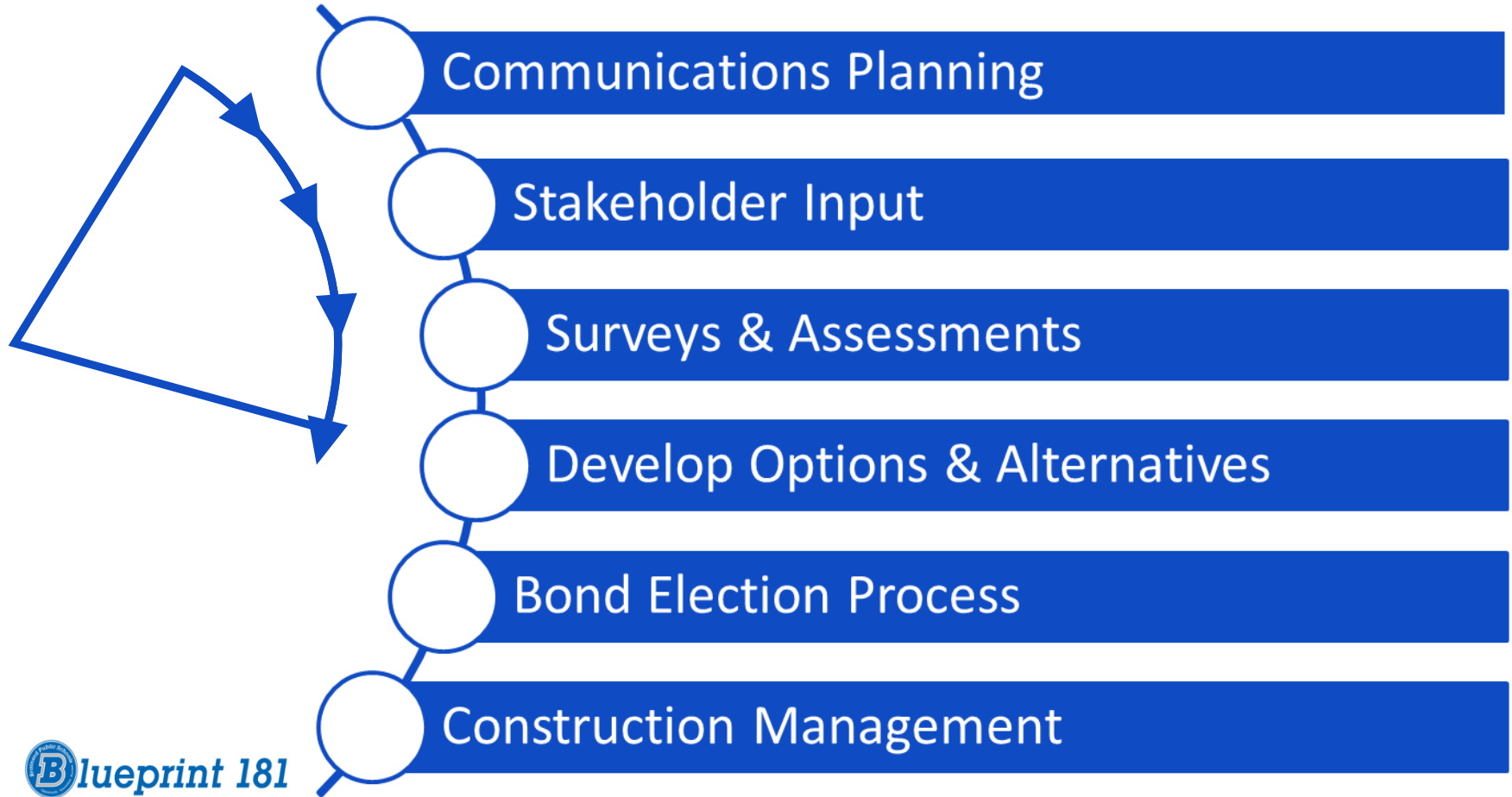
Facilities that Promote...

Opportunity, Innovation and Success for All Learners

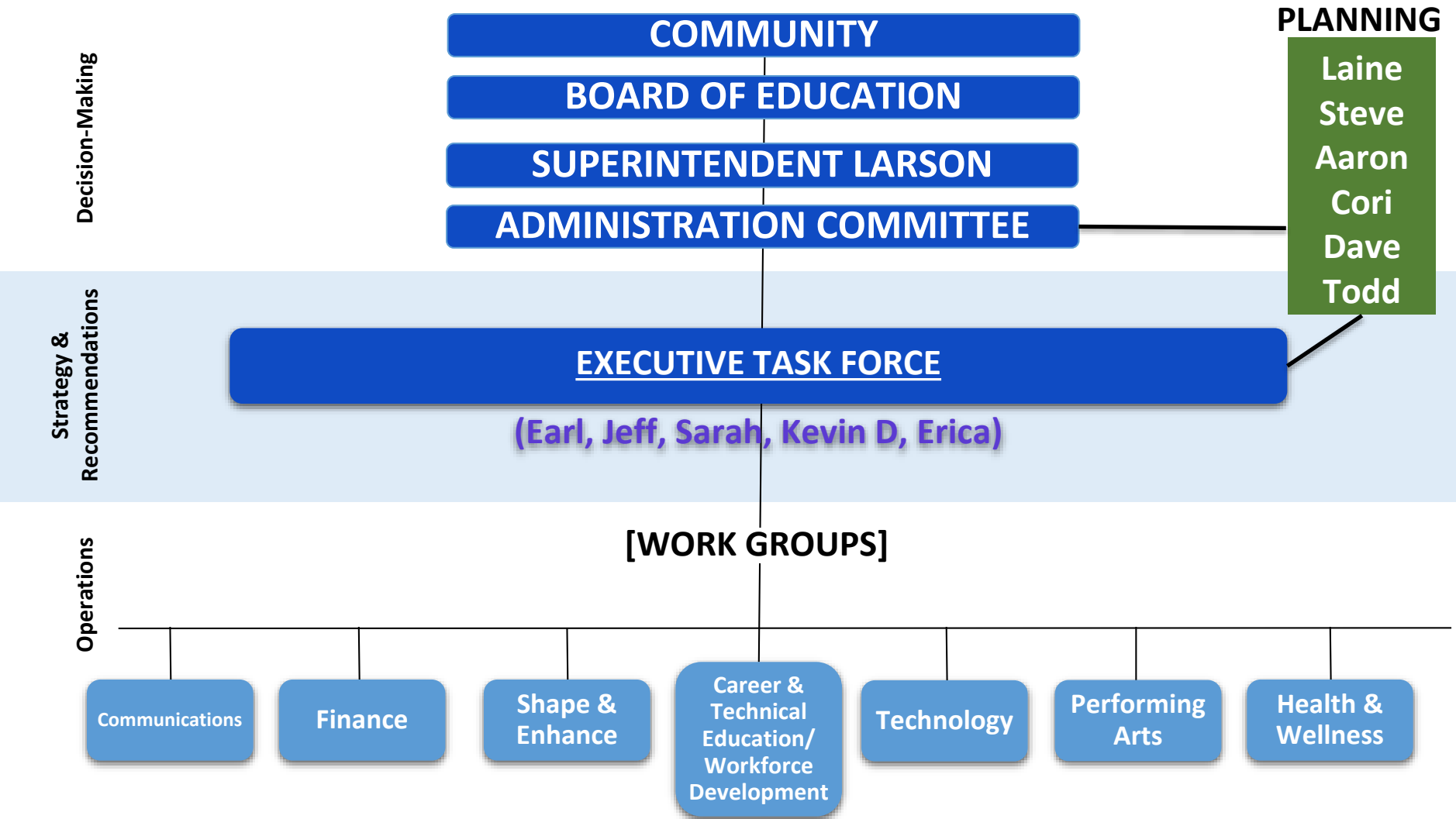
Eight Objectives:

- Safe and secure facilities
- Mechanical and educational adequacy updates
- Space that fosters best practice instruction and 21st Century learning opportunities
- Spaces that promote robust opportunities in academics, arts, activities, & athletics
- Increased community collaboration, career & technical education opportunities, and workforce development initiatives
- Visionary technology integration
- Transparency, engagement, and community trust-building
- Highest quality educational opportunities for our taxpayers' generous investment

Comprehensive Facility 6-Phase Process



“Comprehensive Facility Workflow Chart”





Brainerd Public Schools

Opportunity. Innovation. Success.

Elementary School/Early Childhood Plan & Capacity Alignment

Information Gathering

- Blueprint181: Communications
- Internal and External Listening Sessions
- Surveys: Phone & Online
- Work Groups
- Financial Considerations
- Analysis of Building Conditions

Overview of Options

OPTION 1 - NEW SITE		
OPTION 2 - NEW SITE		
OPTION 3 - NEW SITE		
OPTION 4 - NEW SITE		
School	Capacity	
Harrison	500	
Nisswa	375 + EC	
Lowell	350	
Garfield	375	
Riverside	500	
Baxter-New	500	
Baxter-Existing	EC	
WESB	EC	
TOTAL	2,600	

OPTION 5 - RENEW & EXPAND		
OPTION 6 - RENEW & EXPAND		
OPTION 7 - RENEW & EXPAND		
OPTION 8 - RENEW & EXPAND		
School	Capacity	
Harrison	375 + EC	
Harrison	375	
Nisswa	375 + EC	
Nisswa	375 + EC	
Lowell	350	
Lowell	475	
Garfield	375	
Garfield	375	
Riverside	625	
Riverside	625	
Baxter-New	500	
Baxter-New	500	
Baxter-Existing	EC	
Baxter-Existing	EC	
WESB	EC	
WESB	EC	
TOTAL	2,600	
TOTAL	2,725	

OPTION 9 - RENEW & REMAIN		
OPTION 10 - RENEW & REMAIN		
OPTION 11 - RENEW & REMAIN		
School	Capacity	
Harrison	250	
Nisswa	375 + EC	
Lowell	475	
Garfield	375	
Riverside	500	
Baxter-New	625	
Baxter-Existing	EC	
WESB	EC	
TOTAL	2,600	

Top Two Options:

OPTION 2 - NEW SITE	
School	Capacity
Harrison	500 + EC
Nisswa	375 + EC
Lowell	350
Garfield	375
Riverside	500
Baxter-New	500
Baxter-Existing	EC
WESB	
TOTAL	2,600

OPTION 8 - RENEW & EXPAND	
School	Capacity
Harrison	375
Nisswa	375 + EC
Lowell	475
Garfield	375
Riverside	625
Baxter-New	500
Baxter-Existing	EC
WESB	EC
TOTAL	2,725

- **Meet all of the Comprehensive Facility Objectives and Overall Facility Goal**
- **Equity & Standards for all elementary schools**
 - Safety & Security
 - Adequate classroom size
 - STEM
 - Special Education
 - Technology
 - Arts
 - Early Childhood
 - Accessibility
 - Gymnasium/Multi-purpose
 - Cafeteria/Kitchen
 - Playground/Green Space
 - Media
 - Flexible Space/Conference
 - Transportation
- **Allows for centralized elementary Special Education programming space to be constructed to best meet individual student needs**

Option 2: Highlights

OPTION 2 - NEW SITE	
School	Capacity
Harrison	500 + EC
Nisswa	375 + EC
Lowell	350
Garfield	375
Riverside	500
Baxter-New	500
Baxter-Existing	EC
WESB	
TOTAL	2,600

- Two new elementary schools (Baxter/Brainerd) built to MDE guidelines and encourage current educational best practice instruction in their design
- Provide a more balanced average student capacity among all elementary buildings
- Provide greater longevity of buildings at minimal additional costs
- Decreased deferred maintenance expenses
- Schools situated closer to the center of the attendance zones and where growth could occur
- Flexibility to respond to future growth if additions are necessary
- Transition from Early Childhood to Harrison/Nisswa Elementary Schools will be minimal for students who will stay in that building (Baxter)
- MDE had a positive initial reaction

Option 8: Highlights

OPTION 8 - RENEW & EXPAND	
School	Capacity
Harrison	375
Nisswa	375 + EC
Lowell	475
Garfield	375
Riverside	625
Baxter-New	500
Baxter-Existing	EC
WESB	EC
TOTAL	2,725

- Maintains “neighborhood schools” in accordance with community desire expressed during the listening sessions and surveys --- listening to the community and honoring survey results
- Maintains the current “community feel” and “school climate” of the elementary schools
- Maintains and invests in all of the current elementary buildings
- Less impact on potential boundary re-alignments – less impact on families
- Less impact on staff re-assignments
- During the design phase, we need to consider some additional space and flexibility at some buildings in case expansion is needed for increased enrollment
- Limits new construction as per survey results
- Takes advantage of recent investment in WESB Early Childhood classrooms



Brainerd Public Schools

Opportunity. Innovation. Success.

Board of Education Meeting

Monday, November 13, 2017

6:00 PM

Elementary School/Early Childhood Recommendation: Option 8

OPTION 8 - RENEW & EXPAND	
School	Capacity
Harrison	375
Nisswa	375 + EC
Lowell	475
Garfield	375
Riverside	625
Baxter-New	500
Baxter-Existing	EC
WESB	EC
TOTAL	2,725

New Baxter Elementary Site Recommendation:

***Primary – City Property East of Forestview
Middle School***

***Secondary – Current Forestview Middle
School Site***

Architectural Renderings Recommendation

Architectural Renderings for one new elementary school and up to six repurposed elementary schools for a total amount of \$17,500.00



Brainerd Public Schools

Opportunity. Innovation. Success.

Future Board of Education Meetings:

Special Meeting: November 27, 2017 @ 5:00 p.m.

December 11, 2017 @ 6:00 p.m.

January 8, 2017 @ 5:30 p.m./6:00 p.m.