



# **Blueprint 181: Project Update**

## **Phase Six: Comprehensive Construction Management**

Monday, May 14, 2018 - Board of Education  
Tuesday, May 15, 2018 - Administration  
*(Subject to Change)*

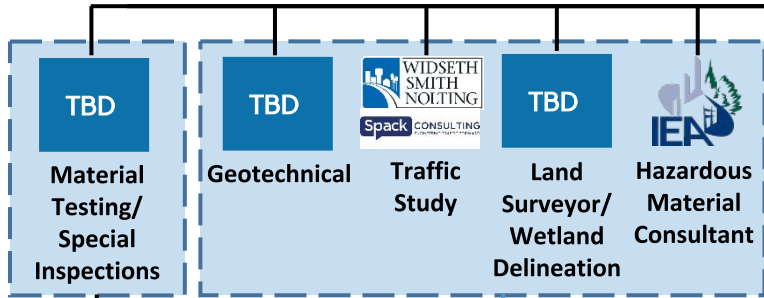
# Comprehensive Long-Range Facility Goal: Facilities that Promote Opportunity, Innovation and Success for All Learners

## Eight Guiding Objectives:

1. Safe and secure facilities
2. Mechanical and educational adequacy updates
3. Space that fosters best practice instruction and 21st Century learning opportunities
4. Spaces that promote robust opportunities in academics, arts, activities, & athletics
5. Increased community collaboration, career & technical education opportunities, and workforce development initiatives
6. Visionary technology integration
7. Transparency, engagement, and community trust-building
8. Highest quality educational opportunities for our taxpayers' generous investment

# Implementation Phase Organizational Chart:

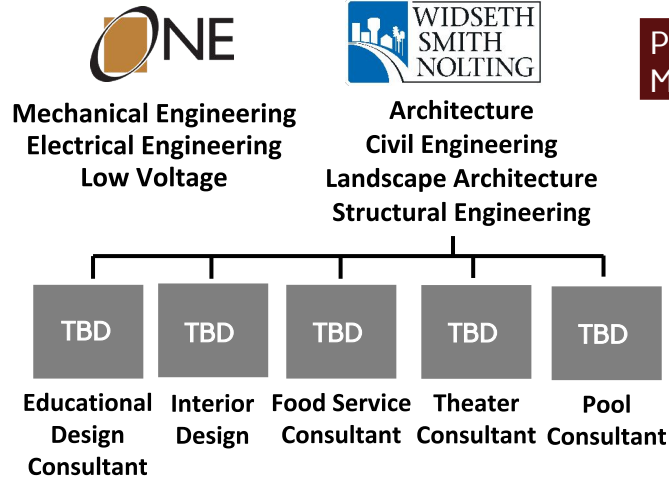
|   |   |  |
|---|---|--|
| <b><u>Approvals:</u></b>                          | <div>ISD 181<br/>Board of Education</div>   |  |
| <b><u>Decisions:</u></b><br>And Limited Approvals | <b><u>Project Oversight Team</u></b> <ul style="list-style-type: none"> <li>Superintendent</li> <li>Assistant Superintendent</li> <li>Board of Education Member(s)</li> <li>Business Services</li> <li>Buildings &amp; Grounds</li> <li>Communications</li> <li>Project Consultants</li> </ul>  |  |
| <b><u>Direction:</u></b>                          | <b><u>District-Wide Design Standards &amp; Task Force Teams</u></b><br>* Safety & Security * Finance * Career & Technical * Performing Arts * Technology & Infrastructure * Lincoln <ul style="list-style-type: none"> <li>Administration</li> <li>Principals</li> <li>Building &amp; Grounds</li> <li>Food Service</li> <li>Teachers</li> <li>Technology</li> <li>Board of Education Members</li> <li>Finance</li> <li>Transportation</li> <li>Community Members</li> <li>Performing Arts</li> <li>Others as Needed</li> </ul>   |  |
| <b><u>Details:</u></b>                            | <b><u>Building Site User Teams</u></b> <div> <div>Elementary Schools</div> <div>Secondary Schools</div> </div> <div> <div> <b>USER GROUPS AT EACH SITE</b> <ul style="list-style-type: none"> <li>Administration</li> <li>Principals</li> <li>Teaching Staff</li> <li>Food Service</li> <li>Building &amp; Grounds</li> <li>Special Ed teachers</li> <li>STEM</li> <li>Finance</li> <li>Others as Needed</li> </ul> </div> <div> <b>SPECIALTY USER GROUPS</b> <ul style="list-style-type: none"> <li>Safety &amp; Security</li> <li>Career &amp; Technical</li> <li>Performing Arts</li> <li>Transportation</li> <li>Technology</li> <li>Finance</li> <li>Lincoln</li> <li>Others as Needed</li> </ul> </div> <div> <b>NEW BAXTER ELEMENTARY</b> <ul style="list-style-type: none"> <li>Administration</li> <li>Principals</li> <li>Teaching Staff</li> <li>Kitchen</li> <li>Building &amp; Grounds</li> <li>Transportation</li> <li>STEM</li> <li>Community</li> <li>Others as Needed</li> </ul> </div> </div> |  |



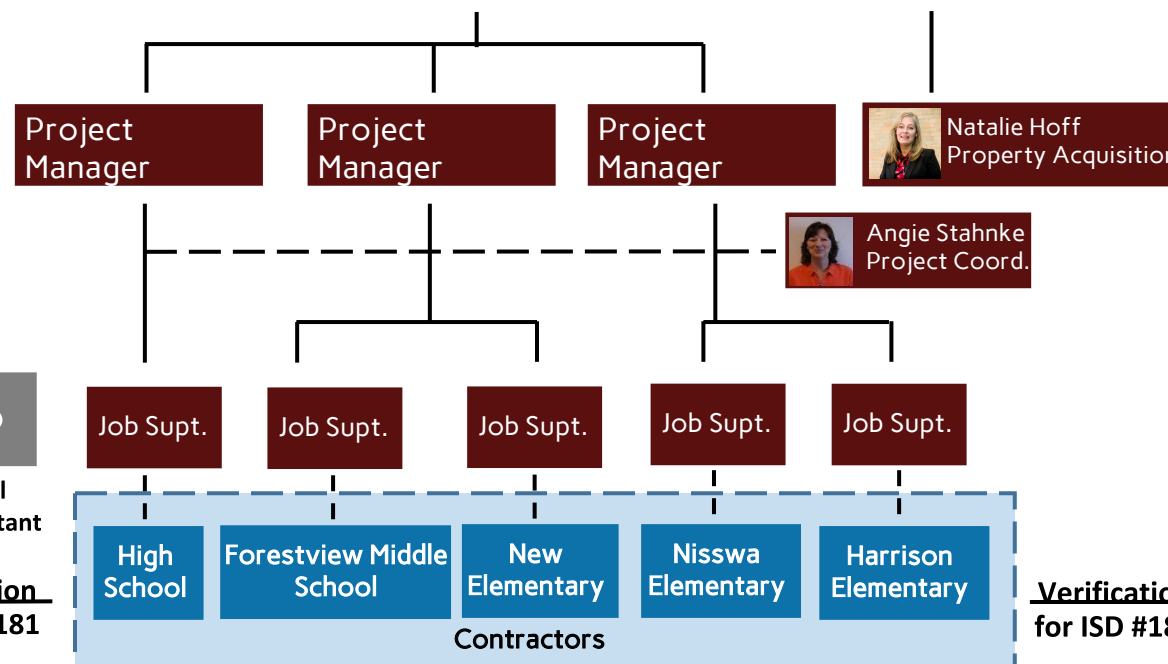
Information to ICS

**ics** | CONSULTING, INC —  
Implementation

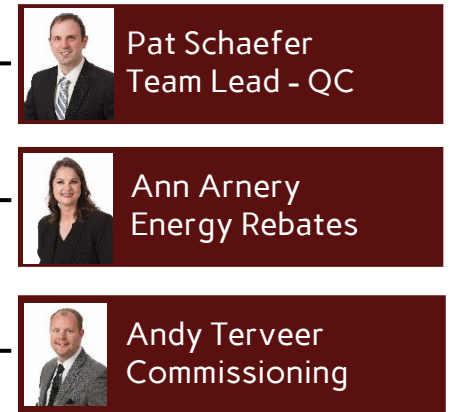
Referendum Planning



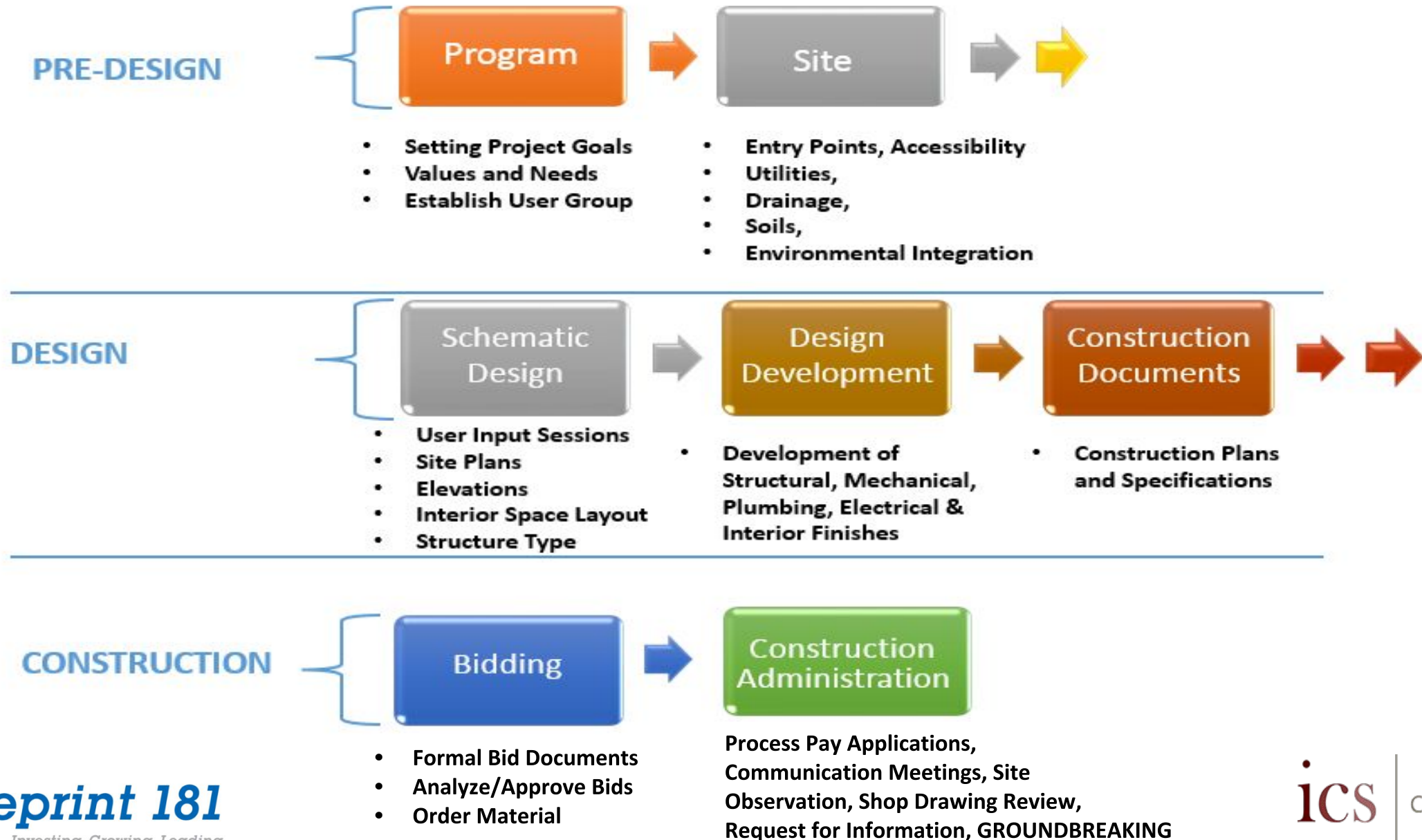
Verification  
for ISD #181



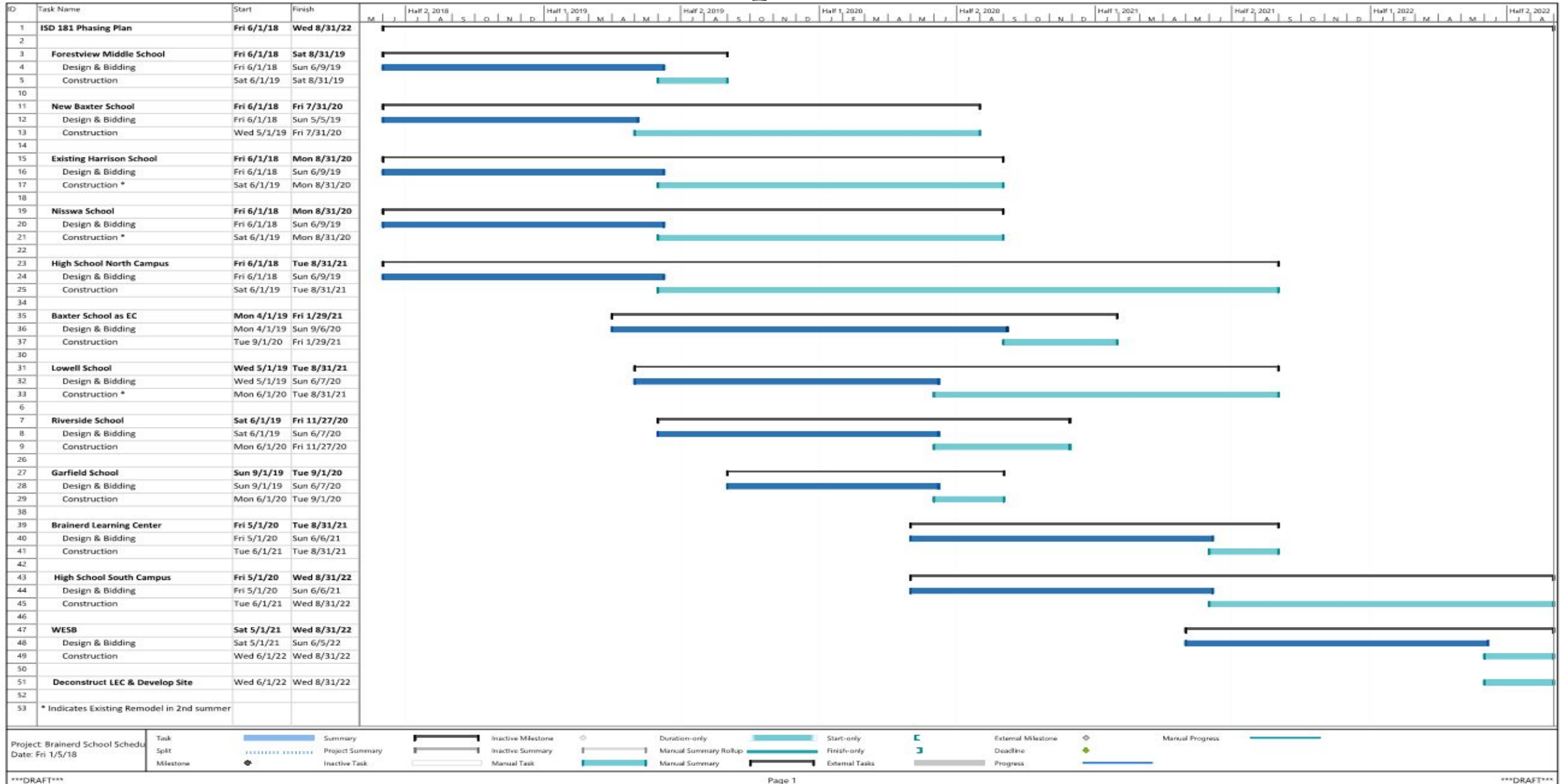
Verification  
for ISD #181



# DESIGN PROCESS



# “DRAFT” Project Implementation Schedules





# Bidding Process:

- Subject to MN statute 471.345 Uniform Municipal Contracting Law
- ICS will garner Contractor Interest
  - ICS Bid Calendar
  - Invite to Bidders
    - Advertised per Project in the Brainerd Dispatch
    - Advertised in Regional Plan Room
    - Reach out to Local and Regional Contractors
    - Drawings available electronically for download and free of charge from ICS
  - Pre-Bid Conference / Walkthroughs
  - Tailor Bid Packages to align with Local Market demand and capacity to do the Work.
- Publicly open and read aloud sealed Bids (Bid Form, Bid Bond & MN Responsible Contractor Compliance).

# Consultant Agreement:

- Leading district-wide process for unified and standardized progress
- Reviewing scope with consultants and subconsultants
- Board updates to be provided





# **Bond Process:**

- **Approved the sale of the bonds and procedures for reimbursement of certain expenditures - April 30, 2018**
- **Approved engaging Ehler Investment Partners LLC as investment advisor - April 30, 2018**
- **Pre-meeting with Ehlers - May 14, 2018**
- **Standard & Poor's bond rating site visit - May 21, 2018**
- **Designated official award the sale of bonds - May 30, 2018**
- **Board approval ratifying sale of bonds - June 11, 2018**
- **Bond closing - June 27, 2018**

# Traffic Study Tentative Schedule:

- Required to complete the new Elementary School
- Board approval - April 30, 2018
- Study at Baxter Elementary, Forestview Middle School and potential site of new school to begin May 15-18, 2018
- Traffic study meeting #1 - May 30, 2018
- Report completed - July 2018
- Update to School Board
- Resume land acquisition process for new Elementary School in Baxter, MN

# Elementary School Tours:

- Studying design, flow, safety/security and function of newly constructed schools
- Will be scheduled in late May, June, July, and August
- District teams to tour new elementary schools
- Locations and dates will be coordinated, with district guidance, by consultants

# **2018 Summer Work:**

- **Consultants will work with principals to put together Building Site User Teams**
- **District Design Standards Team meetings will be scheduled throughout the summer**
- **Project Oversight Team will continue to meet weekly**
- **Regular and Special Board of Education meetings as scheduled and needed**
- **Plan for re-entry as staff, students and families return for SY 2018-2019**

# Communication Strategy:

- **Goal Moving Forward: Keep all stakeholders informed of project progress**
  - Board of Education & Staff
  - Families
  - Blueprint 181 contact list
  - Community
- **Monthly messages incorporated into district editorial calendar**
- **Transitioning website from election info to construction info**
- **Your Role: Protocol for handling suggestions**



# INDEPENDENT SCHOOL DISTRICT NO 181

## Approved 2018-19 Calendar

Totals: In Session = 173 Paid Legal Holidays = 4 Workshops = 7

|     | S  | M  | T  | W  | TH | F  | S  |                                    | In Session | Paid Legal Holidays | Workshop |
|-----|----|----|----|----|----|----|----|------------------------------------|------------|---------------------|----------|
| Aug | 26 | 27 | 28 | 29 | 30 | 31 |    |                                    |            |                     | 3.5      |
| Sep |    |    |    |    |    |    | 1  |                                    |            |                     |          |
|     | 2  | 3  | 4  | 5  | 6  | 7  | 8  | Labor Day 9/3                      | 4          | 1                   |          |
|     | 9  | 10 | 11 | 12 | 13 | 14 | 15 |                                    | 5          |                     |          |
|     | 16 | 17 | 18 | 19 | 20 | 21 | 22 |                                    | 5          |                     |          |
|     | 23 | 24 | 25 | 26 | 27 | 28 | 29 |                                    | 5          |                     |          |
|     | 30 |    |    |    |    |    |    |                                    | 19         |                     |          |
| Oct |    |    |    |    |    |    |    |                                    | 5          |                     |          |
|     | 7  | 8  | 9  | 10 | 11 | 12 | 13 |                                    | 5          |                     |          |
|     | 14 | 15 | 16 | 17 | 18 | 19 | 20 | EM Conference 10/18-19             | 3          |                     | 1        |
|     | 21 | 22 | 23 | 24 | 25 | 26 | 27 |                                    | 5          |                     |          |
|     | 28 | 29 | 30 | 31 |    |    |    |                                    | 3          |                     |          |
|     |    |    |    |    |    |    |    |                                    | 21         |                     |          |
| Nov |    |    |    |    |    |    |    |                                    | 2          |                     |          |
|     | 4  | 5  | 6  | 7  | 8  | 9  | 10 |                                    | 5          |                     |          |
|     | 11 | 12 | 13 | 14 | 15 | 16 | 17 |                                    | 5          |                     |          |
|     | 18 | 19 | 20 | 21 | 22 | 23 | 24 | Thanksgiving 11/22-23              | 3          | 2                   |          |
|     | 25 | 26 | 27 | 28 | 29 | 30 |    | Inservice 11/26                    | 4          |                     | 1        |
|     |    |    |    |    |    |    |    |                                    | 19         |                     |          |
| Dec |    |    |    |    |    |    |    |                                    | 5          |                     |          |
|     | 2  | 3  | 4  | 5  | 6  | 7  | 8  |                                    | 5          |                     |          |
|     | 9  | 10 | 11 | 12 | 13 | 14 | 15 |                                    | 5          |                     |          |
|     | 16 | 17 | 18 | 19 | 20 | 21 | 22 |                                    | 5          |                     |          |
|     | 23 | 24 | 25 | 26 | 27 | 28 | 29 | Christmas Break 12/24 - 1/1        | 0          |                     |          |
|     | 30 | 31 |    |    |    |    |    |                                    | 0          |                     |          |
|     |    |    |    |    |    |    |    |                                    | 15         |                     |          |
| Jan |    |    |    |    |    |    |    |                                    | 3          |                     |          |
|     | 6  | 7  | 8  | 9  | 10 | 11 | 12 |                                    | 5          |                     |          |
|     | 13 | 14 | 15 | 16 | 17 | 18 | 19 | End of 1st Semester 1/18 (87 days) | 5          |                     |          |
|     | 20 | 21 | 22 | 23 | 24 | 25 | 26 | Inservice 1/21                     | 4          |                     | 1        |
|     | 27 | 28 | 29 | 30 | 31 |    |    |                                    | 4          |                     |          |
|     |    |    |    |    |    |    |    |                                    | 21         |                     |          |

|     | S  | M  | T  | W  | TH | F  | S  |                                    | In Session | Paid Legal Holidays | Workshop |
|-----|----|----|----|----|----|----|----|------------------------------------|------------|---------------------|----------|
| Feb |    |    |    |    |    |    | 1  | 2                                  | 1          |                     |          |
|     | 3  | 4  | 5  | 6  | 7  | 8  | 9  |                                    | 5          |                     |          |
|     | 10 | 11 | 12 | 13 | 14 | 15 | 16 |                                    | 5          |                     |          |
|     | 17 | 18 | 19 | 20 | 21 | 22 | 23 |                                    | 5          |                     |          |
|     | 24 | 25 | 26 | 27 | 28 |    |    |                                    | 4          |                     |          |
|     |    |    |    |    |    |    |    |                                    | 20         |                     |          |
| Mar |    |    |    |    |    |    | 1  | 2                                  | 1          |                     |          |
|     | 3  | 4  | 5  | 6  | 7  | 8  | 9  |                                    | 5          |                     |          |
|     | 10 | 11 | 12 | 13 | 14 | 15 | 16 | Spring Break 3/11-15               | 0          |                     |          |
|     | 17 | 18 | 19 | 20 | 21 | 22 | 23 |                                    | 5          |                     |          |
|     | 24 | 25 | 26 | 27 | 28 | 29 | 30 |                                    | 5          |                     |          |
|     | 31 |    |    |    |    |    |    |                                    | 16         |                     |          |
| Apr |    |    |    |    |    |    |    |                                    | 5          |                     |          |
|     | 7  | 8  | 9  | 10 | 11 | 12 | 13 |                                    | 5          |                     |          |
|     | 14 | 15 | 16 | 17 | 18 | 19 | 20 | Good Friday 4/19                   | 4          |                     |          |
|     | 21 | 22 | 23 | 24 | 25 | 26 | 27 |                                    | 5          |                     |          |
|     | 28 | 29 | 30 |    |    |    |    |                                    | 2          |                     |          |
|     |    |    |    |    |    |    |    |                                    | 21         |                     |          |
| May |    |    |    |    |    |    |    |                                    | 3          |                     |          |
|     | 5  | 6  | 7  | 8  | 9  | 10 | 11 | End of 2nd Semester 5/30 (86 days) | 5          |                     |          |
|     | 12 | 13 | 14 | 15 | 16 | 17 | 18 | Last Student Day Gr 1-11 5/30      | 5          |                     |          |
|     | 19 | 20 | 21 | 22 | 23 | 24 | 25 | BHS Graduation 5/31                | 5          |                     |          |
|     | 26 | 27 | 28 | 29 | 30 | 31 |    | Teacher Workshop 5/31              | 3          | 1                   |          |
|     |    |    |    |    |    |    |    | Kinderfriend Day 5/29              |            |                     |          |
|     |    |    |    |    |    |    |    |                                    | 21         |                     |          |
| Jun |    |    |    |    |    |    |    |                                    |            |                     |          |
|     | 2  | 3  | 4  | 5  | 6  | 7  | 8  | Memorial Day 5/27                  |            |                     |          |
|     |    |    |    |    |    |    |    | Snow Makeup Day 6/3 - 6/4          |            |                     | 0.5      |

# Questions?

# Thank you!

