



School Board Retreat  
September 20, 2017



## *Findings From Stakeholder Input*



- Brainerd Schools – Great Teachers and Staff
- Quality Educational Opportunities
- Neighborhood Schools - Very Important
- High School Campus Location – Valued Part of Community
- Business Community Requesting Enhanced Communication, Workforce Development Partnerships, Robust Career/Technical Education Opportunities, and Technology Integration
- Forestview Middle School is a Quality Facility and Currently has Appropriate Amount of Space



# Findings From Stakeholder Input

- Lack of Physical and Functional Space at Elementary Schools and Functional Space at the Secondary Schools, Results in an Inequality of Educational Delivery
- Facilities Faced with Significant Deferred Maintenance Needs  
*(With Exception Of Forestview Middle School)*
- Safety and Security Concerns Across District
- Parking and Pick Up-Drop Off Concerns Across District  
*(Need For Separation of Bus/Parent Drop Off-Pick Up)*



# Challenges in Our Elementary Schools

# Challenges In Our Elementary Schools

- Safety and Security
- Inadequate Physical Space
- Classrooms Don't Reflect Current Instruction Needs
- Age => Significant Deferred Maintenance

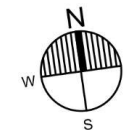
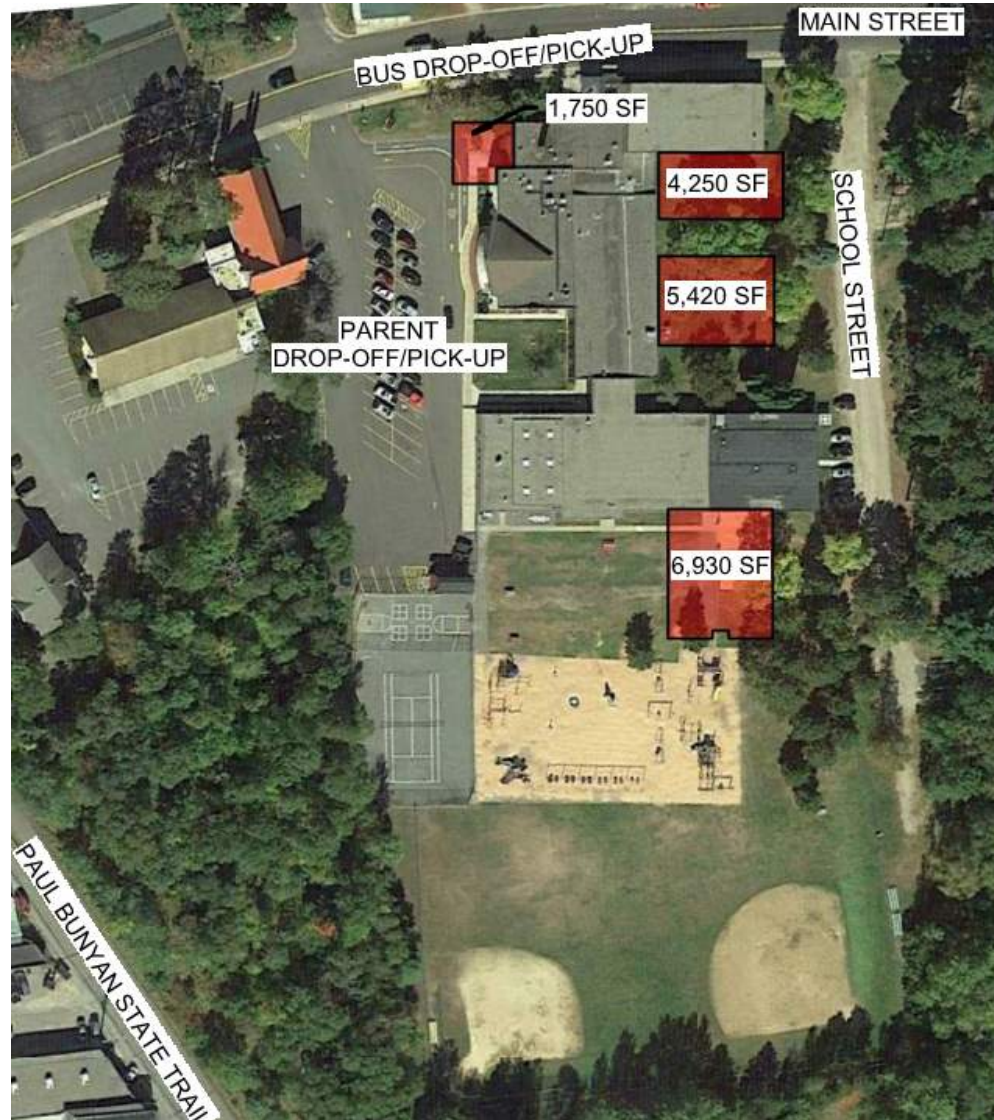


# Nisswa Elementary School





# Nisswa Elementary School (3-Section)



## ADDITIONS AND MAJOR RENOVATION AREAS



Nisswa  
Elementary  
School  
(3-Section)

### Remodel:

- Expand Music Rm.

### Addition:

- Controlled Entrance
- Expanded Admin.  
Nurse  
Conference Rm.  
Work Room  
Offices

### Remodel:

- Art/Sci./Tech.
- Early Childhood
- Staff Work Room
- Book Room
- Circulation

### Repurpose:

- Class to Break Out

### Addition:

- Phy. Ed. Space
- Storage

### Addition:

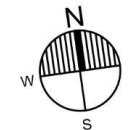
- Kindergarten Classes
- Special Ed.

### Remodel:

- Classrooms
- Special Ed.

### Addition:

- Classrooms





## Nisswa Elementary Project Highlights:

- Improved Security and Supervision
- Renovate Existing Facility to Modernize Throughout and Provide Dedicated Art/Science/Tech Space
- Reconfigure Kitchen to Improve Food Service Efficiency
- Additions for Classrooms and Gym
- Enlarge Existing Classrooms & Music Room

| NISSWA ELEMENTARY SCHOOL |         |          |        |
|--------------------------|---------|----------|--------|
| School Specifications    | Current | Proposed | Change |
| K-4 Classrooms           | 12      | 15       | 3      |
| EC Classrooms            | 1       | 2        | 1      |
| Art./Sci./Tech.          | 0       | 1        | 1      |
| Total Classrooms         | 13      | 18       | 5      |
|                          |         |          |        |
| K-4 Capacity             | 300     | 375      | 75     |
| EC Capacity              | 16      | 32       | 16     |
| Total Capacity           | 316     | 407      | 91     |
|                          |         |          |        |
| Building SQFT            | 40,638  | 59,218   | 18,580 |
| Site Acres               | 8.0     | 8.0      | 0.0    |

# Nisswa Elementary School

## NISSWA ELEMENTARY SCHOOL

Existing

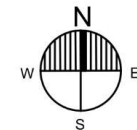
Proposed

| CATEGORY |  | COLOR | COLOR |
|----------|--|-------|-------|
| 1        | Classroom Size and Suitability                     | R     | G     |
| 2        | Cafeteria/Kitchen/Serving                          | Y     | G     |
| 3        | Security and Supervision                           | R     | G     |
| 4        | Main Office/Nurse/Support Services                 | R     | G     |
| 5/6      | Science & Art Class/labs                           | Y     | G     |
| 7        | Music Classrooms/Practice Areas/Etc.               | R     | G     |
| 8        | Staff Lounge/Collaborative Planning Areas          | Y     | Y     |
| 9        | Student Commons/Break-Out Areas                    | R     | Y     |
| 10       | Physical Ed./Athletics/Gym/Locker Rooms/Pool Etc.  | R     | G     |
| 11       | Site Suitability: Fields/Green Space/ Storage Etc. | G     | G     |
| 12       | Parking/Bus Drop-Off: Staff/Students/Parents       | Y     | Y     |
| 13       | Technology   | Y     | G     |
| 14       | Library/Media Center: Location/Size/Layout         | G     | G     |
| 15       | Special Education/Support Services                 | R     | Y     |
| 16       | Auditoriums/Performing Arts Spaces                 | Y     | Y     |
| 17       | Career and Technical Education                     | NA    | NA    |
| 18       | Hallways/Lockers/Washrooms/Maintenance space       | Y     | Y     |

# Garfield Elementary School



# Garfield Elementary School (3 section)



Addition/Remodel:

- Kitchen Expansion

Garfield  
Elementary  
School  
(3 section)

Addition/Remodel:

- Controlled Entrance
- Expanded Admin.  
Nurse  
Conference Rm.  
Work Room  
Offices

Repurpose:

- Class & Spec. Ed.



Remodel:

- K-Room now Music

Addition/Remodel:

- Now 2 properly  
sized K-rooms

Addition:

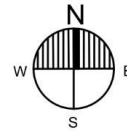
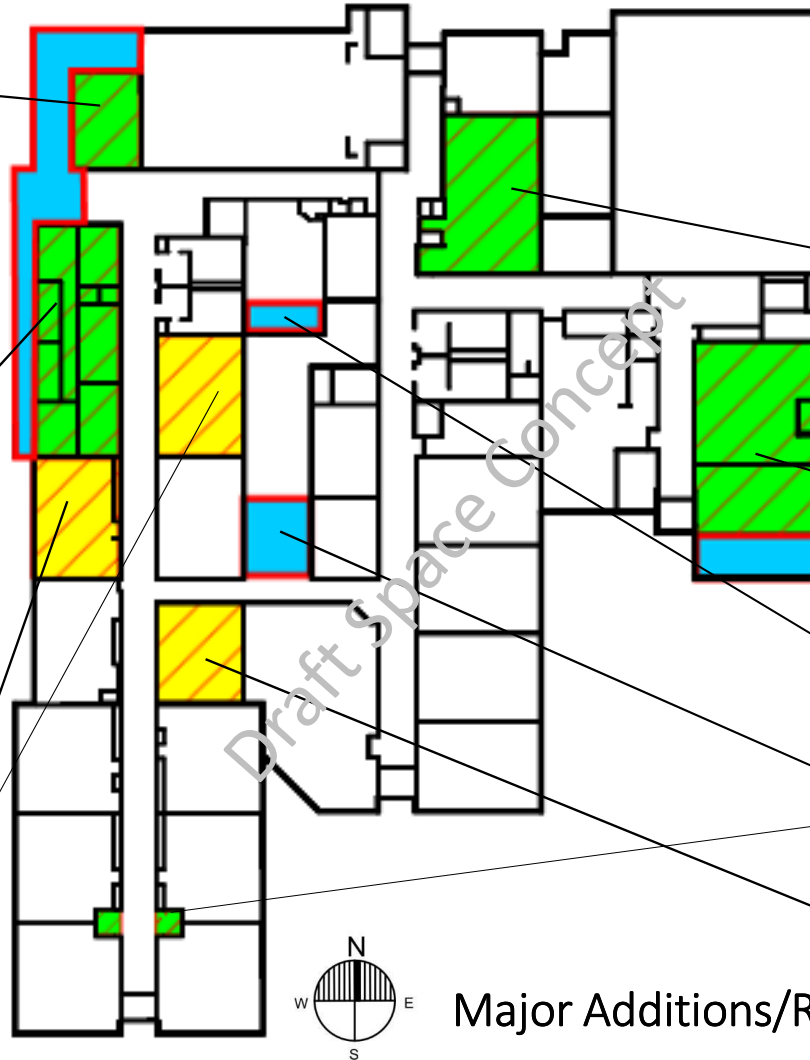
- Expand Staff Work Rm.

Addition/Remodel:

- Break Out Spaces

Repurpose:

- Art/Sci./Tech.



Major Additions/Renovations



## Garfield Elementary Project Highlights:

- Improved Security and Supervision
- Expanded Kitchen for Improved Food Service Efficiency
- Addition to Enlarge (2) Kindergarten Classrooms
- Renovate Existing Spaces to Modernize Throughout, Relocate Music and Provide Dedicated Art/Science/Tech Space

| GARFIELD ELEMENTARY SCHOOL |         |          |        |
|----------------------------|---------|----------|--------|
| School Specifications      | Current | Proposed | Change |
| K-4 Classrooms             | 17      | 15       | -2     |
| EC Classrooms              | 0       | 0        | 0      |
| Art/Sci./Tech.             | 0       | 1        | 1      |
| Total Classrooms           | 17      | 16       | -1     |
|                            |         |          |        |
| K-4 Capacity               | 393     | 375      | -18    |
| EC Capacity                | 0       | 0        | 0      |
| Total Capacity             | 393     | 375      | -18    |
|                            |         |          |        |
| Building SQFT              | 48,135  | 52,550   | 4,415  |
| Site Acres                 | 4.0     | +/-5.4   | +/-1.4 |

# Garfield Elementary School

## GARFIELD ELEMENTARY

*Existing*

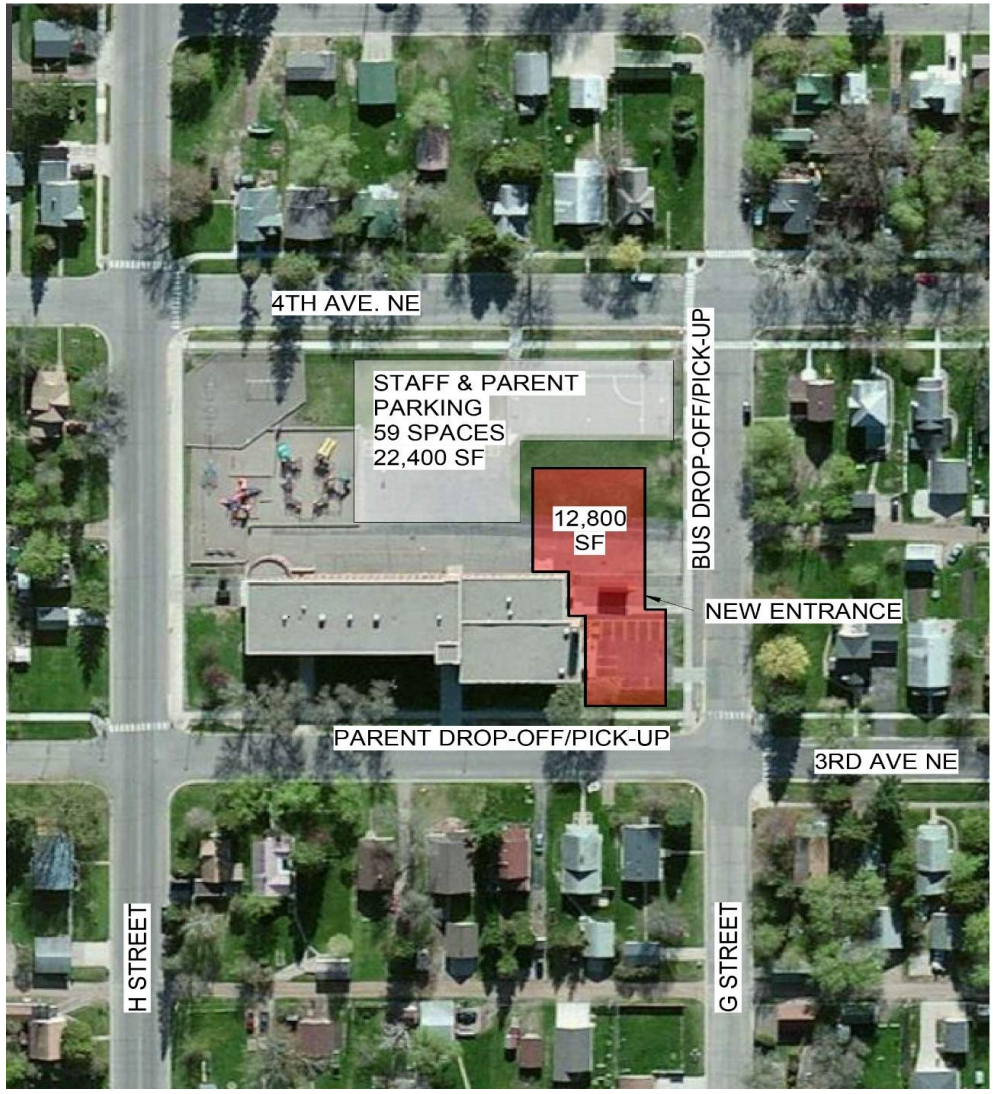
*Proposed*

| CATEGORY |  | COLOR | COLOR |
|----------|--|-------|-------|
| 1        | Classroom Size and Suitability                     | Y     | G     |
| 2        | Cafeteria/Kitchen/Serving                          | R     | G     |
| 3        | Security and Supervision                           | R     | G     |
| 4        | Main Office/Nurse/Support Services                 | R     | G     |
| 5/6      | Science & Art Class/labs                           | R     | G     |
| 7        | Music Classrooms/Practice Areas/Etc.               | Y     | G     |
| 8        | Staff Lounge/Collaborative Planning Areas          | R     | G     |
| 9        | Student Commons/Break-Out Areas                    | R     | Y     |
| 10       | Physical Ed./Athletics/Gym/Locker Rooms/Pool Etc.  | Y     | Y     |
| 11       | Site Suitability: Fields/Green Space/ Storage Etc. | Y     | Y     |
| 12       | Parking/Bus Drop-Off: Staff/Students/Parents       | R     | Y     |
| 13       | Technology   | Y     | G     |
| 14       | Library/Media Center: Location/Size/Layout         | G     | G     |
| 15       | Special Education/Support Services                 | R     | Y     |
| 16       | Auditoriums/Performing Arts Spaces                 | Y     | Y     |
| 17       | Career and Technical Education                     | NA    | NA    |
| 18       | Hallways/Lockers/Washrooms/Maintenance space       | R     | Y     |

# Lowell Elementary School



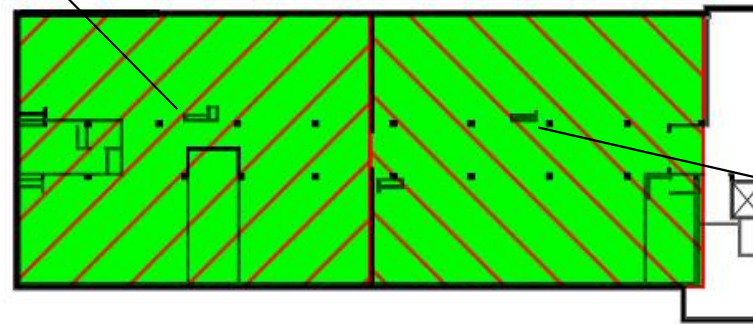
Lowell  
Elementary  
School  
(2 Section + Gifted  
& Talented)



Remodel:

- 4<sup>th</sup> Grade Studio

Lowell  
Elementary  
School  
(2 Section + Gifted  
& Talented)

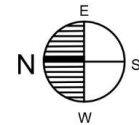


Remodel:

- 3<sup>rd</sup> Grade Studio

UPPER LEVEL

Draft Space Concept





Remodel:

- 1<sup>st</sup> Grade Studio

Remodel:

- 2<sup>nd</sup> Grade Studio

Addition:

- Kindergarten

Remodel:

- Special Ed.



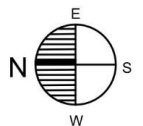
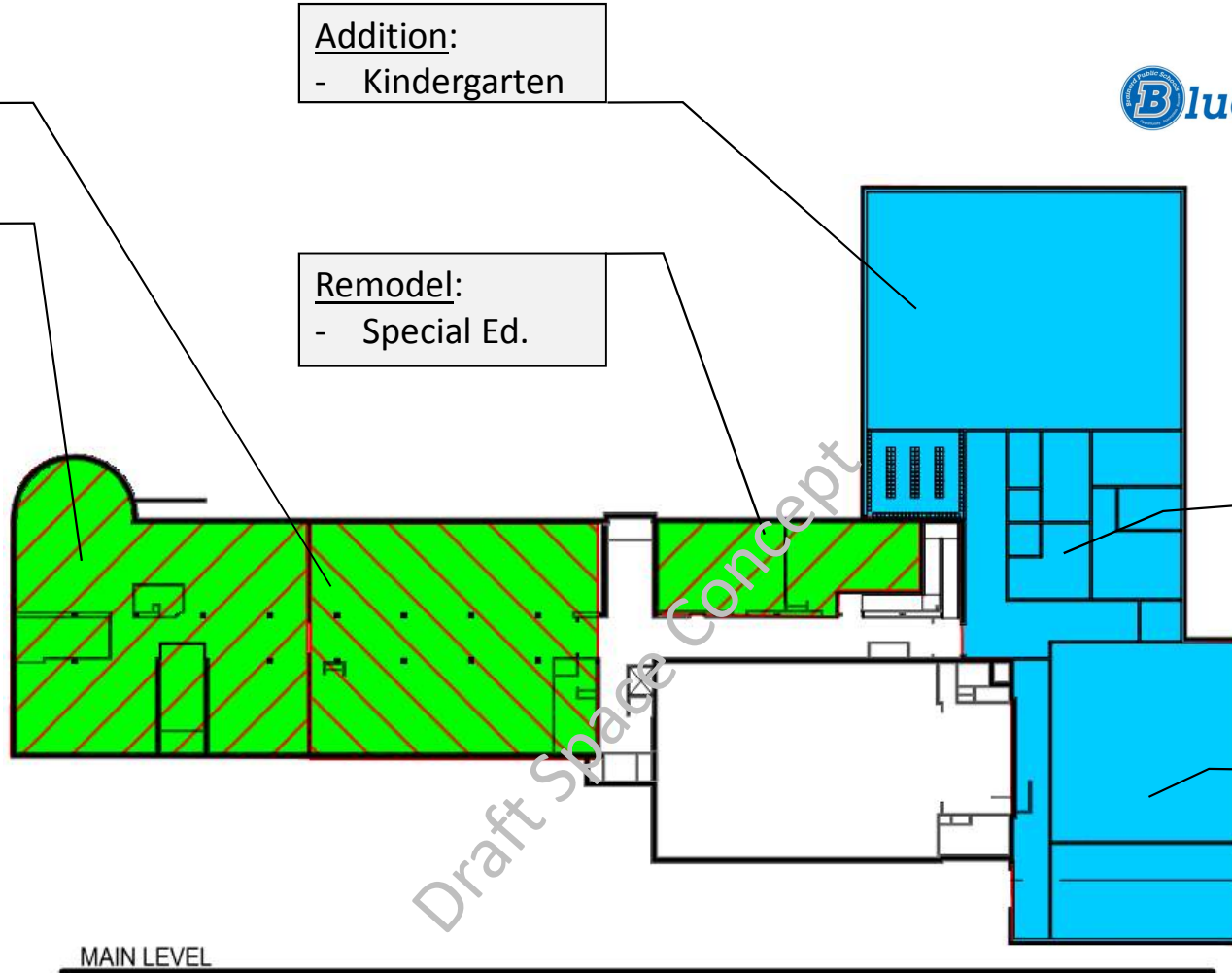
Addition:

- Controlled Entrance
- Admin.
- Nurse
- Conf. Rm.
- Work Rm.

Addition:

- Kitchen
- Multi-Purpose
- Café/Gym

Lowell  
Elementary  
School  
(2 Section + Gifted &  
Talented)



Remodel:

- Music
- Robotics & Engineering

Lowell  
Elementary  
School  
(2 Section + Gifted &  
Talented)

Remodel:

- Science
- Culinary Arts

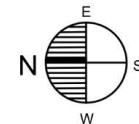
Remodel:

- Spanish
- Toilets

Remodel:

- Staff Lounge
- Special Ed.

LOWER LEVEL



## Lowell Elementary Project Highlights:

- Improved Security & Supervision
- Renovate Existing Facility to Modernize Throughout, Improve Accessibility, Provide Dedicated Art/Science/Tech Spaces
- Additions for Multi-Purpose Room to Relieve Space Pressure on Existing Gym & Kitchen to Improve Food Service Efficiency
- Relocate Current Kindergarten Classrooms to New Addition, Enlarge Existing Classrooms and Relocate General Classrooms from Lower Level

| LOWELL ELEMENTARY SCHOOL |         |          |        |
|--------------------------|---------|----------|--------|
| School Specifications    | Current | Proposed | Change |
| K-4 Classrooms           | 19      | 15       | -4     |
| EC Classrooms            | 0       | 0        | 0      |
| Art/Sci./Tech            | 0       | 3        | 3      |
| Total Classrooms         | 19      | 18       | -1     |
|                          |         |          |        |
| K-4 Capacity             | 429     | 350      | -79    |
| EC Capacity              | 0       | 0        | 0      |
| Total Capacity           | 429     | 350      | -79    |
|                          |         |          |        |
| Building SQFT            | 41,595  | 54,395   | 12,800 |
| Site Acres               | 2.5     | +/-3.5   | +/-1   |

# Lowell Elementary School

## LOWELL ELEMENTARY

*Existing*

*Proposed*

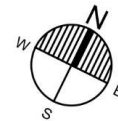
| CATEGORY |  | COLOR | COLOR |
|----------|--|-------|-------|
| 1        | Classroom Size and Suitability                     | R     | G     |
| 2        | Cafeteria/Kitchen/Serving                          | R     | G     |
| 3        | Security and Supervision                           | R     | G     |
| 4        | Main Office/Nurse/Support Services                 | R     | G     |
| 5/6      | Science & Art Class/labs                           | R     | G     |
| 7        | Music Classrooms/Practice Areas/Etc.               | R     | Y     |
| 8        | Staff Lounge/Collaborative Planning Areas          | R     | G     |
| 9        | Student Commons/Break-Out Areas                    | R     | G     |
| 10       | Physical Ed./Athletics/Gym/Locker Rooms/Pool Etc.  | Y     | G     |
| 11       | Site Suitability: Fields/Green Space/ Storage Etc. | Y     | Y     |
| 12       | Parking/Bus Drop-Off: Staff/Students/Parents       | R     | Y     |
| 13       | Technology   | Y     | G     |
| 14       | Library/Media Center: Location/Size/Layout         | R     | G     |
| 15       | Special Education/Support Services                 | R     | Y     |
| 16       | Auditoriums/Performing Arts Spaces                 | Y     | Y     |
| 17       | Career and Technical Education                     | NA    | NA    |
| 18       | Hallways/Lockers/Washrooms/Maintenance space       | R     | Y     |

# Riverside Elementary School





Riverside  
Elementary  
School  
(4 Section)



# Riverside Elementary School (4 Section)



## Remodel:

- Kitchen Expansion
- Café Expansion

## Remodel:

- Art/Sci./Tech.

## Remodel:

- Breakout Space

## Remodel:

- Art/Sci./Tech.

## Remodel:

- Shower Room

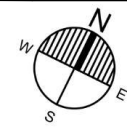
## Remodel:

- Enlarged Kindergarten Rms.

## Remodel:

- Breakout Space

Draft Space Concept



## Riverside Elementary Project Highlights:

- Improved Security and Supervision
- Expand Kitchen for Improved Food Service Efficiency
- Renovate Existing Spaces to Modernize Throughout
- Enlarge Existing Kindergarten Classrooms
- Provide Dedicated Art/Science/Tech and Collaborative Spaces

| RIVERSIDE ELEMENTARY SCHOOL |         |          |        |
|-----------------------------|---------|----------|--------|
| School Specifications       | Current | Proposed | Change |
| K-4 Classrooms              | 26      | 20       | -6     |
| EC Classrooms               | 0       | 0        | 0      |
| Art/Sci./Tech.              | 0       | 2        | 2      |
| Total Classrooms            | 26      | 22       | -4     |
|                             |         |          |        |
| K-4 Capacity                | 620     | 500      | -120   |
| EC Capacity                 | 0       | 0        | 0      |
| Total Capacity              | 620     | 500      | -120   |
|                             |         |          |        |
| Building SQFT               | 88,900  | 88,900   | 0      |
| Site Acres                  | 5.5     | 5.5      | 0.0    |

# Riverside Elementary School

## RIVERSIDE ELEMENTARY

*Existing*

*Proposed*

| CATEGORY |  | COLOR | COLOR |
|----------|--|-------|-------|
| 1        | Classroom Size and Suitability                     | Y     | G     |
| 2        | Cafeteria/Kitchen/Serving                          | R     | G     |
| 3        | Security and Supervision                           | Y     | G     |
| 4        | Main Office/Nurse/Support Services                 | Y     | Y     |
| 5/6      | Science & Art Class/labs                           | R     | G     |
| 7        | Music Classrooms/Practice Areas/Etc.               | G     | G     |
| 8        | Staff Lounge/Collaborative Planning Areas          | Y     | Y     |
| 9        | Student Commons/Break-Out Areas                    | R     | G     |
| 10       | Physical Ed./Athletics/Gym/Locker Rooms/Pool Etc.  | R     | Y     |
| 11       | Site Suitability: Fields/Green Space/ Storage Etc. | Y     | Y     |
| 12       | Parking/Bus Drop-Off: Staff/Students/Parents       | R     | Y     |
| 13       | Technology   | G     | G     |
| 14       | Library/Media Center: Location/Size/Layout         | G     | G     |
| 15       | Special Education/Support Services                 | R     | Y     |
| 16       | Auditoriums/Performing Arts Spaces                 | Y     | Y     |
| 17       | Career and Technical Education                     | NA    | NA    |
| 18       | Hallways/Lockers/Washrooms/Maintenance space       | Y     | Y     |

# Harrison Elementary School





# Harrison (Existing)

Harrison  
Elementary  
School  
Addition  
(4 Section)



Draft Space Concept

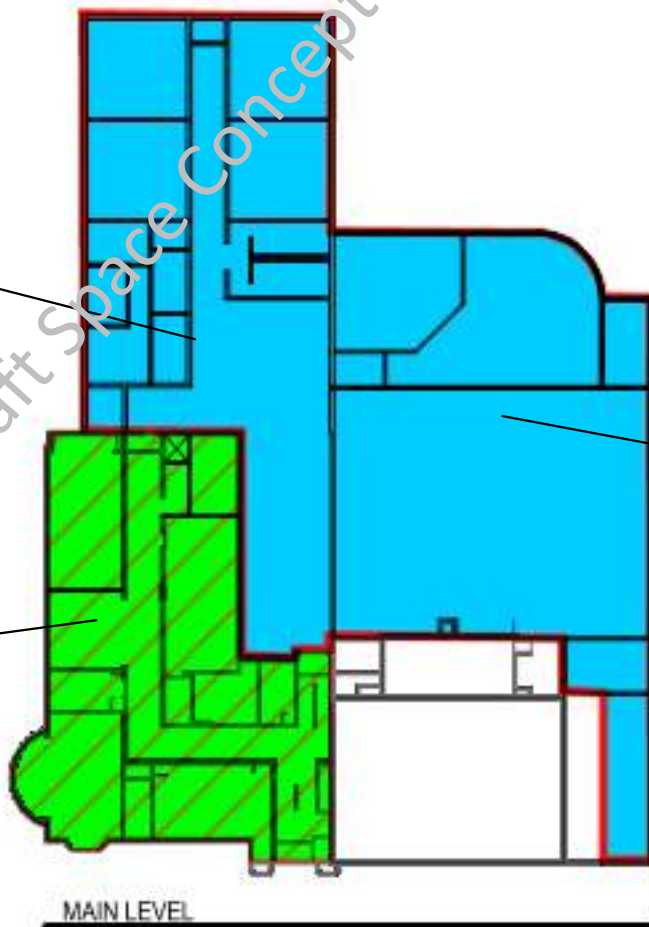
Addition:

- Classrooms
- Main Office
- Nurse
- Support Spaces
- Toilets

Harrison  
Elementary  
School  
Addition  
(4 Section)

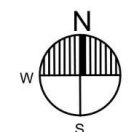
Remodel:

- Kindergarten Rms.
- Collaboration Space



Addition:

- Music
- Media
- Gym



# Harrison Elementary School Addition (4 Section)



## Lower Remodel:

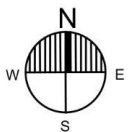
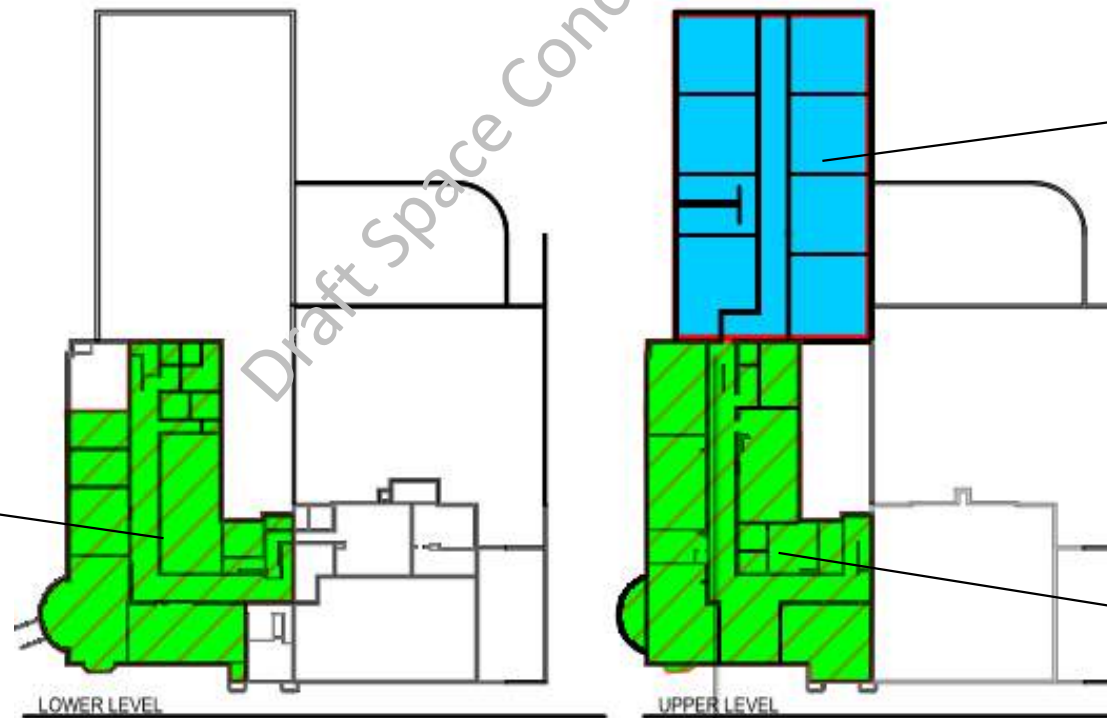
- Special Ed.
- Staff Work Rm.
- Art/Sci./Tech.

## 2<sup>nd</sup> Floor Addition:

- Classroom
- Toilets

## 2<sup>nd</sup> Floor Remodel:

- Classrooms
- Collaboration Space



## Harrison (Addition) Elem. Project Highlights:

- Improved Security and Supervision
- Provide Elevator, Ramp For Accessibility Throughout
- Re-purpose Gym to Cafeteria & Add New Kitchen to Serve Enrollment
- Add Gym, Media Center & Music at Grade to Serve Floors Above & Below
- Provide Classroom Addition to Become 4-section School & Enlarge Existing Classrooms
- Renovate Existing Spaces to Modernize Throughout and Provide Dedicated Art/Science/Tech Space

| HARRISON ELEMENTARY SCHOOL |         |          |        |
|----------------------------|---------|----------|--------|
| School Specifications      | Current | Proposed | Change |
| K-4 Classrooms             | 14      | 20       | 6      |
| EC Classrooms              | 0       | 0        | 0      |
| Art/Sci./Tech.             | 0       | 1        | 1      |
| Total Classrooms           | 14      | 21       | 7      |
|                            |         |          |        |
| K-4 Capacity               | 275     | 500      | 225    |
| EC Capacity                | 0       | 0        | 0      |
| Total Capacity             | 275     | 500      | 225    |
|                            |         |          |        |
| Building SQFT              | 35,738  | 65,738   | 30,000 |
| Site Acres                 | 2.0     | +/-4.1   | +/-2.1 |

# Harrison (Addition) Elementary School

## HARRISON

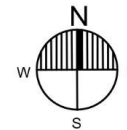
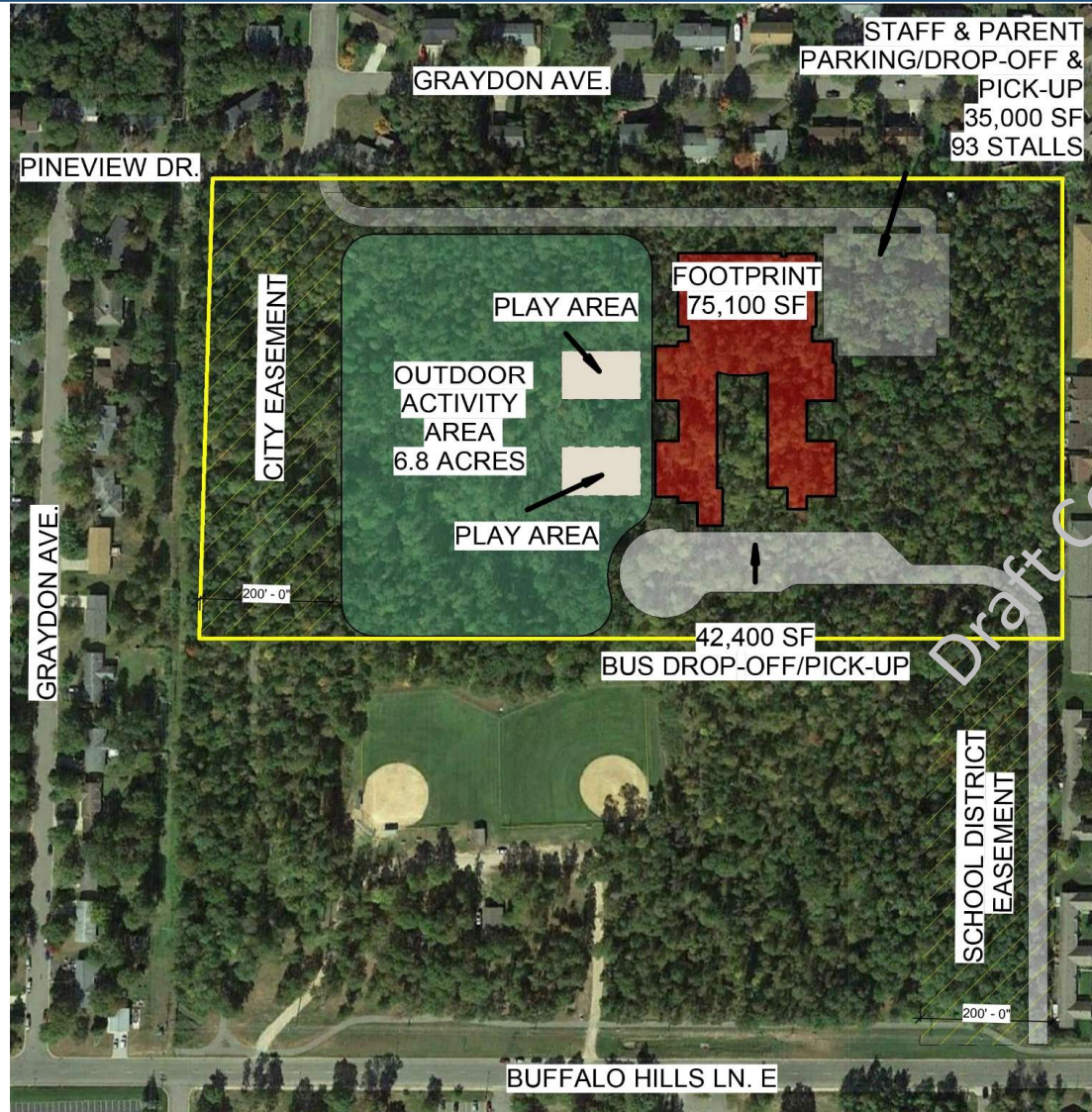
*Existing*

*Proposed*

| CATEGORY |  | COLOR | COLOR |
|----------|--|-------|-------|
| 1        | Classroom Size and Suitability                     | R     | G     |
| 2        | Cafeteria/Kitchen/Serving                          | R     | G     |
| 3        | Security and Supervision                           | R     | G     |
| 4        | Main Office/Nurse/Support Services                 | R     | G     |
| 5/6      | Science & Art Class/labs                           | R     | G     |
| 7        | Music Classrooms/Practice Areas/Etc.               | R     | G     |
| 8        | Staff Lounge/Collaborative Planning Areas          | R     | G     |
| 9        | Student Commons/Break-Out Areas                    | R     | Y     |
| 10       | Physical Ed./Athletics/Gym/Locker Rooms/Pool Etc.  | R     | G     |
| 11       | Site Suitability: Fields/Green Space/ Storage Etc. | R     | Y     |
| 12       | Parking/Bus Drop-Off: Staff/Students/Parents       | R     | Y     |
| 13       | Technology   | R     | G     |
| 14       | Library/Media Center: Location/Size/Layout         | R     | G     |
| 15       | Special Education/Support Services                 | R     | G     |
| 16       | Auditoriums/Performing Arts Spaces                 | R     | Y     |
| 17       | Career and Technical Education                     | NA    | NA    |
| 18       | Hallways/Lockers/Washrooms/Maintenance space       | R     | Y     |



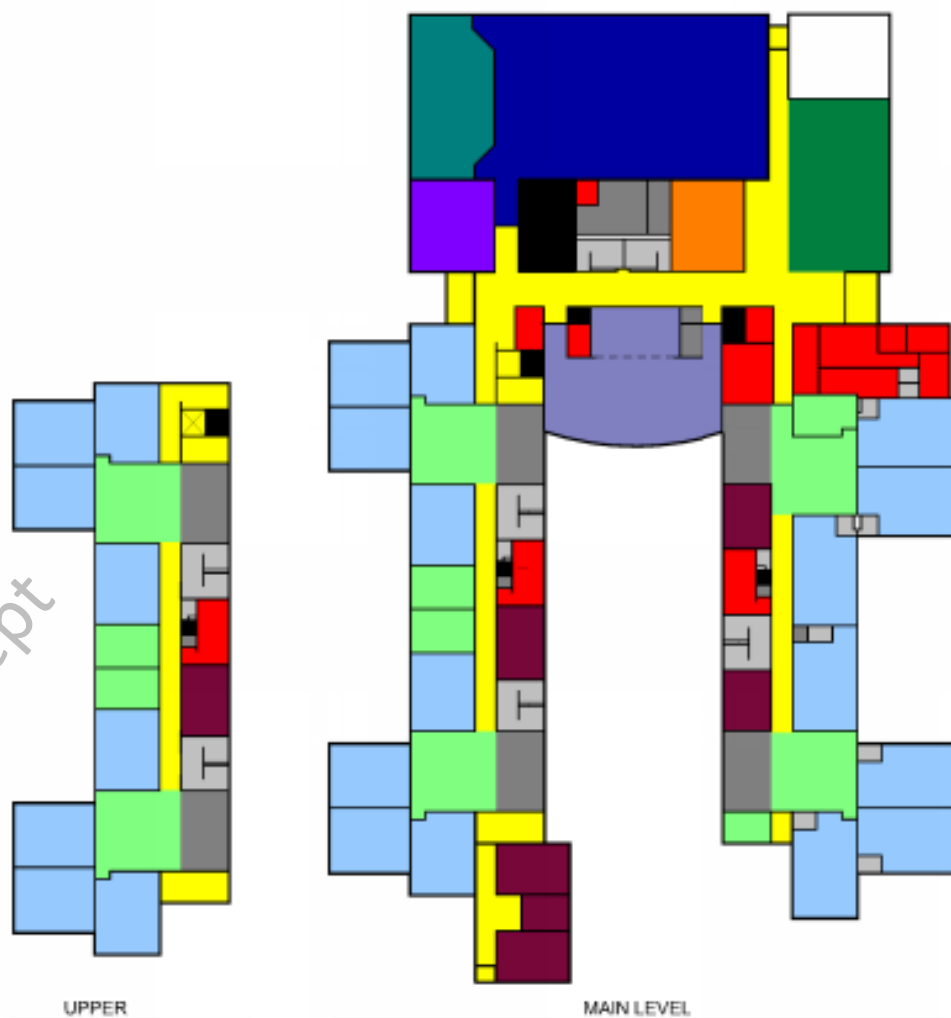
# Harrison Elementary School (New) 4-Section



# Harrison Elementary School (New) 4-Section

92,900 Square Feet  
500 Student + Early Childhood

Draft Concept



## OCCUPANCY LEGEND

- |                     |                     |
|---------------------|---------------------|
| ■ ADMINISTRATION    | ■ MEDIA CENTER      |
| ■ CAFETERIA         | ■ MUSIC             |
| ■ CIRCULATION       | ■ RESTROOM          |
| ■ COLLABORATION     | ■ SPECIAL EDUCATION |
| ■ GENERAL CLASSROOM | ■ STAGE             |
| ■ GYMNASIUM         | ■ STEAM             |
| □ KITCHEN           | ■ STORAGE           |
| ■ MECHANICAL        |                     |



## New Baxter Elementary School





# Property 2A



# Property 2A



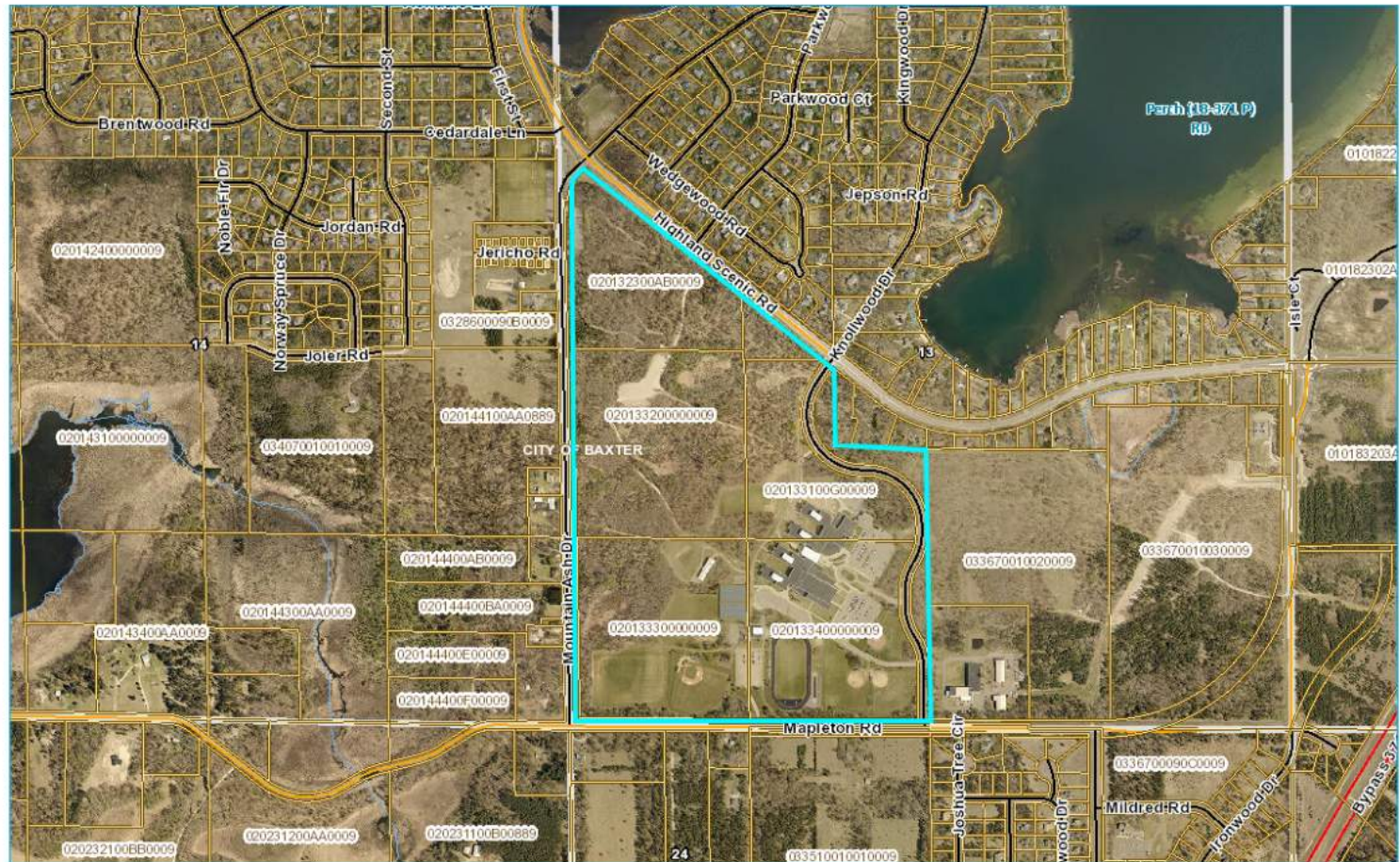


# Property 8A

## School District Properties



## Property 8A





# Property 8B

## Owned by the City of Baxter

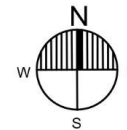


# Property 8B



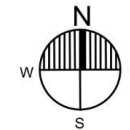


# Baxter Elementary School (New) 5-Section



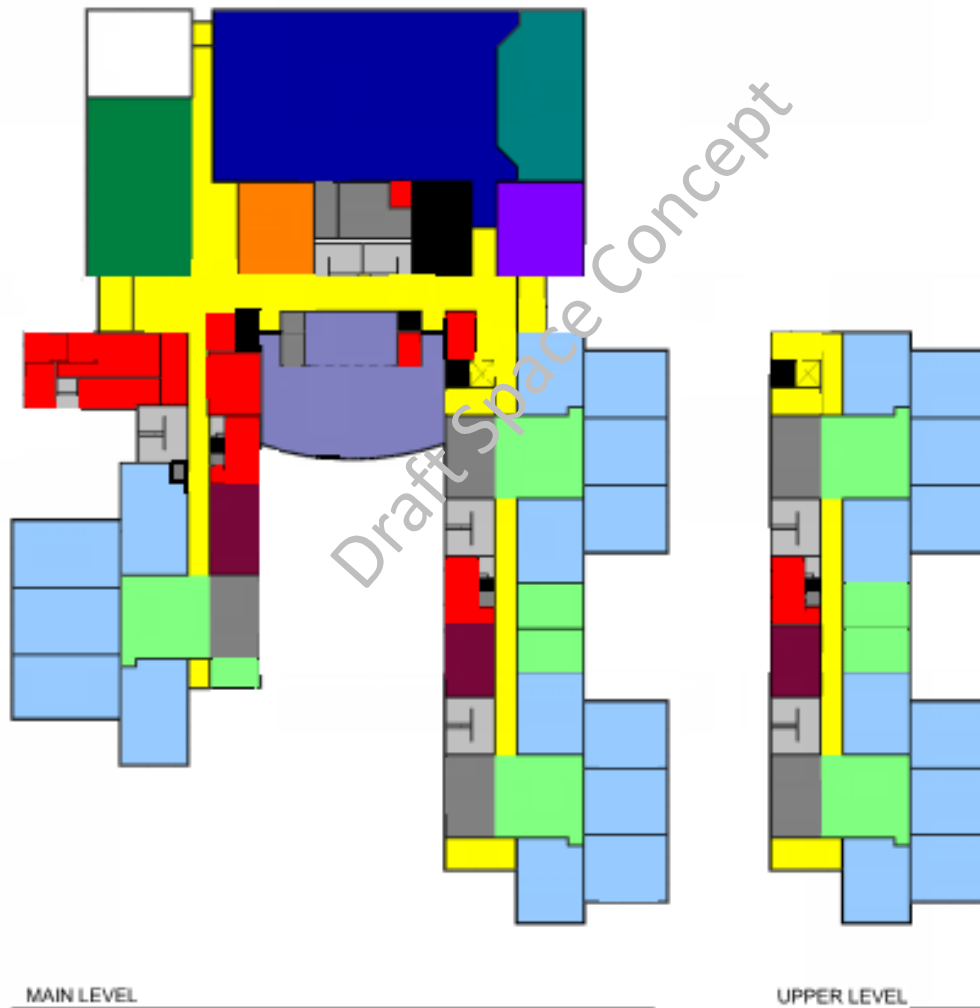


# Baxter Elementary School (New) 5-Section



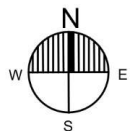
# Baxter Elementary School (New) 5-Section

85,780 Square Feet  
625 Students



## OCCUPANCY LEGEND

- |  |  |
|--|--|
| <span style="color: red;">■</span> ADMINISTRATION          | <span style="color: purple;">■</span> MUSIC              |
| <span style="color: green;">■</span> CAFETERIA             | <span style="color: grey;">■</span> RESTROOM             |
| <span style="color: yellow;">■</span> CIRCULATION          | <span style="color: darkred;">■</span> SPECIAL EDUCATION |
| <span style="color: lightgreen;">■</span> COLLABORATION    | <span style="color: teal;">■</span> STAGE                |
| <span style="color: lightblue;">■</span> GENERAL CLASSROOM | <span style="color: orange;">■</span> STEAM              |
| <span style="color: blue;">■</span> GYMNASIUM              | <span style="color: darkgrey;">■</span> STORAGE          |
| <span style="color: white;">■</span> KITCHEN               |  |
| <span style="color: black;">■</span> MECHANICAL            |  |

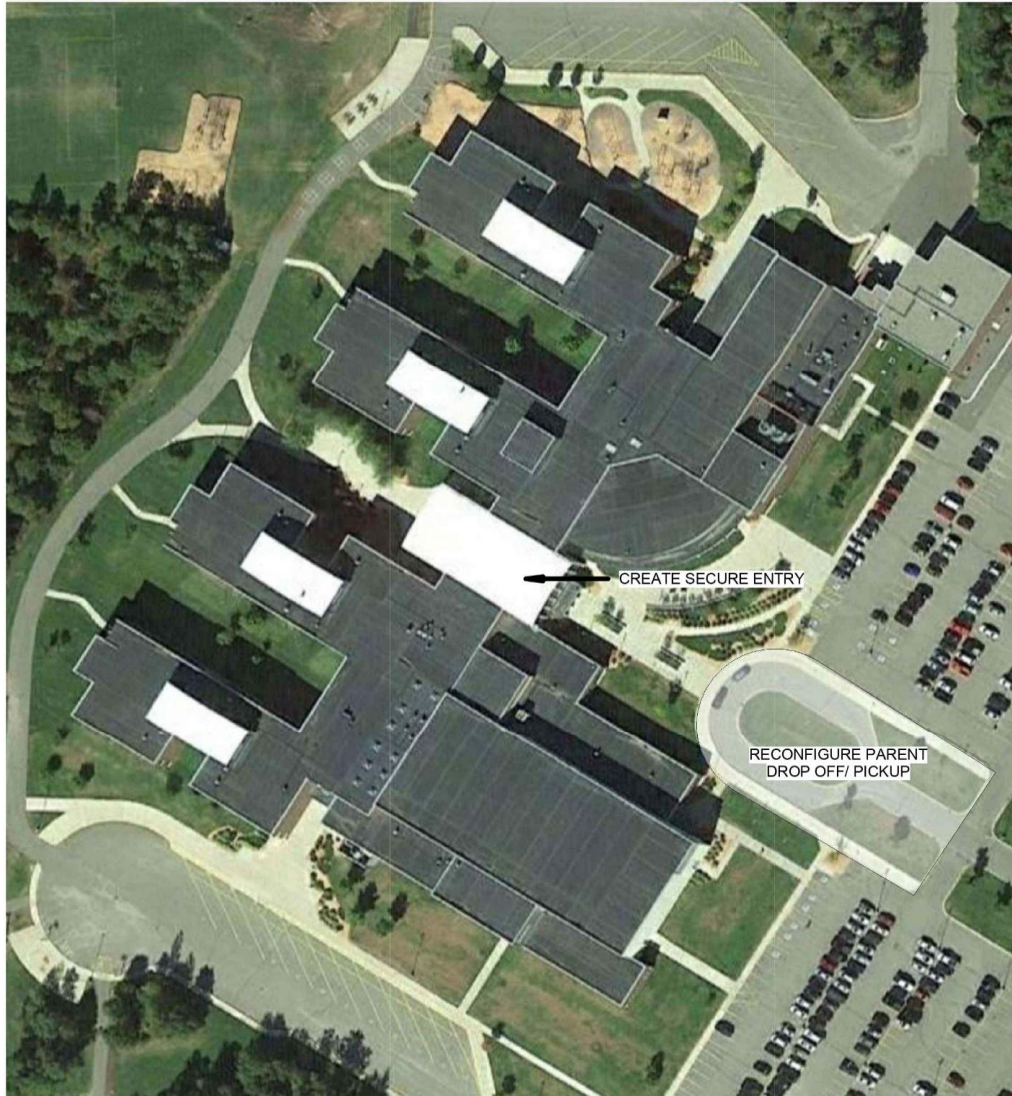
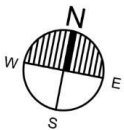


## Elementary Schools Budget Summary

|                       | Budget Estimate |
|-----------------------|-----------------|
| • Nisswa              | \$12M-\$13M     |
| • Garfield            | \$ 9M-\$9.5M    |
| • Lowell              | \$12M-13M       |
| • Riverside           | \$10M-\$11M     |
| • Harrison – Existing | \$20M-\$21M     |
| • Harrison – New      | \$25M-\$27M     |
| • Baxter New          | \$24M-\$26M     |

# Challenges in Our Secondary Schools

# Forestview Middle School



- Controlled Entrance
- Parent Drop-off / Pick-up
- Deferred Maintenance

Budget Estimate:  
\$1.5M - \$2M



# Challenges in Our Remaining Secondary Schools

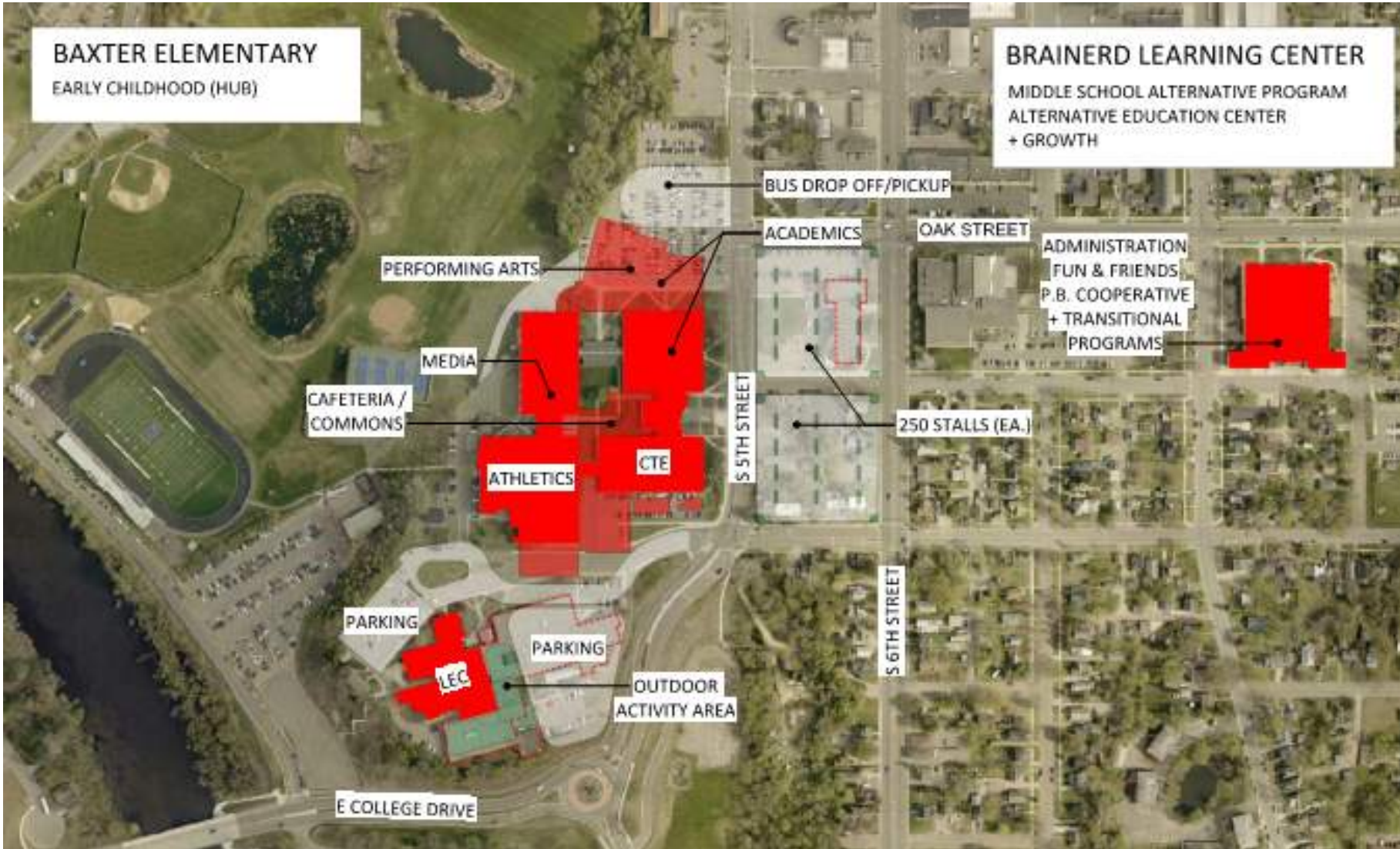
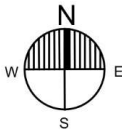
- Safety and Security
- Inefficient, Fragmented Campus
- Age => Significant Deferred Maintenance



# Brainerd High School

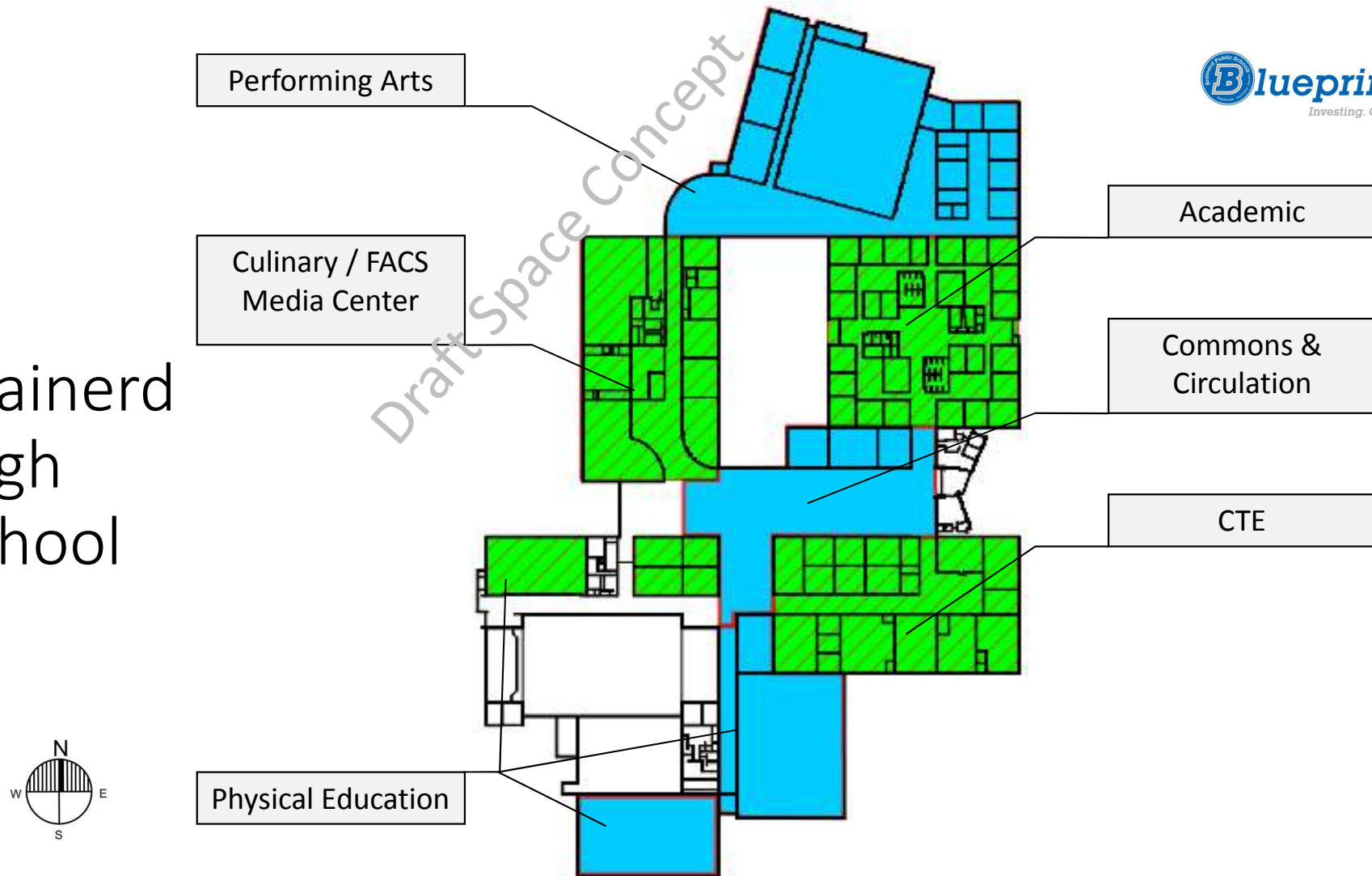


BHS





# Brainerd High School

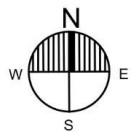
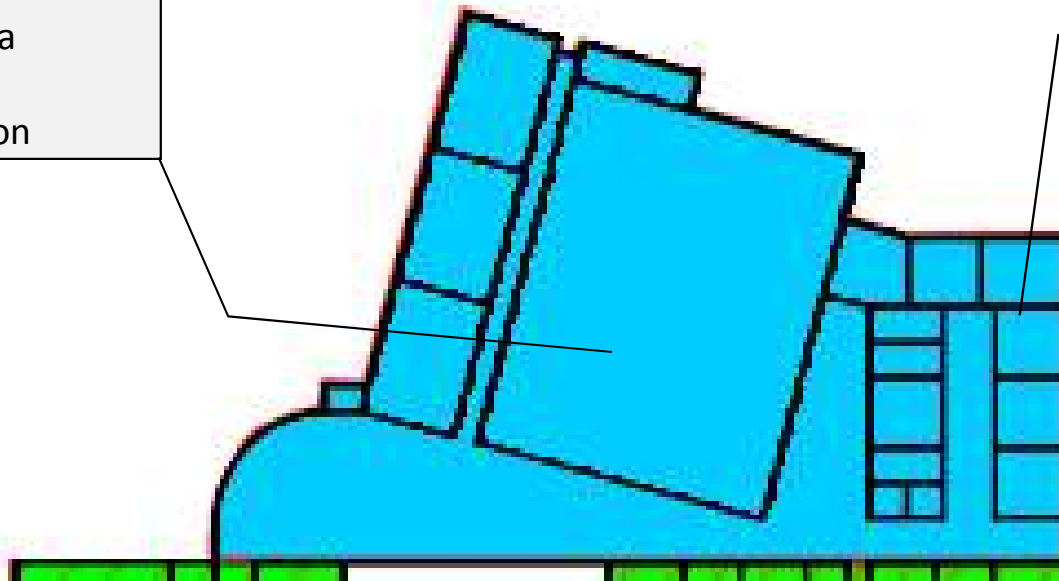


# Brainerd High School

Addition:

- Performing Arts
- Band
- Orchestra
- Choir
- Circulation

Academic



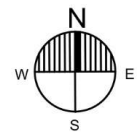
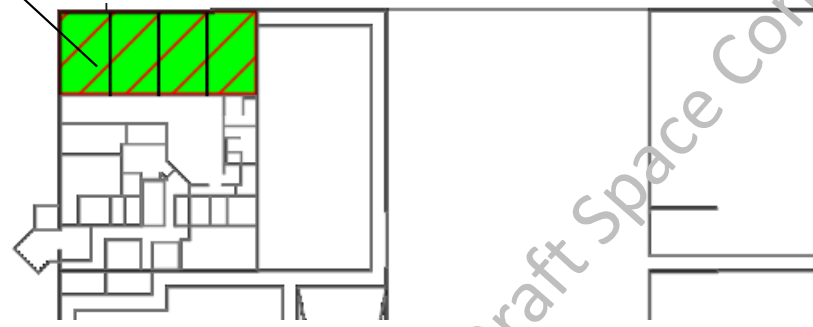
Main Level

Draft Space Concept



# Brainerd High School

Remodel:  
- Special Ed.  
- PAES Lab



Lower Level

# Brainerd High School

## Main Level Remodel:

- English
- Social Studies
- Collaboration Space
- Special Education

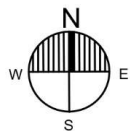
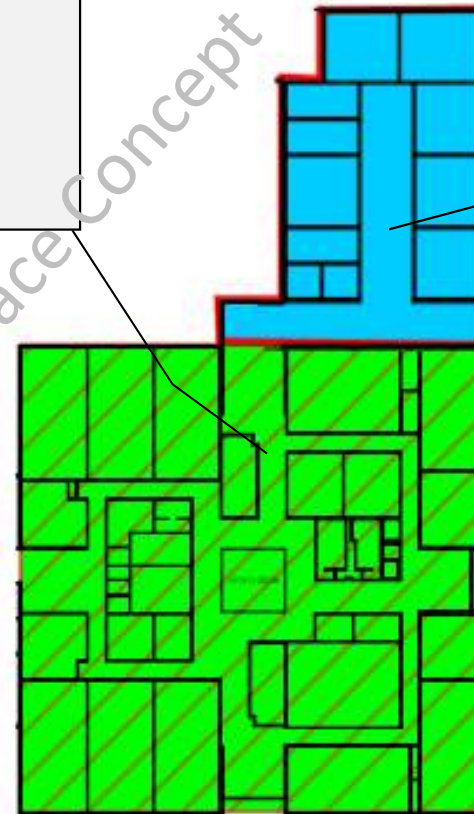
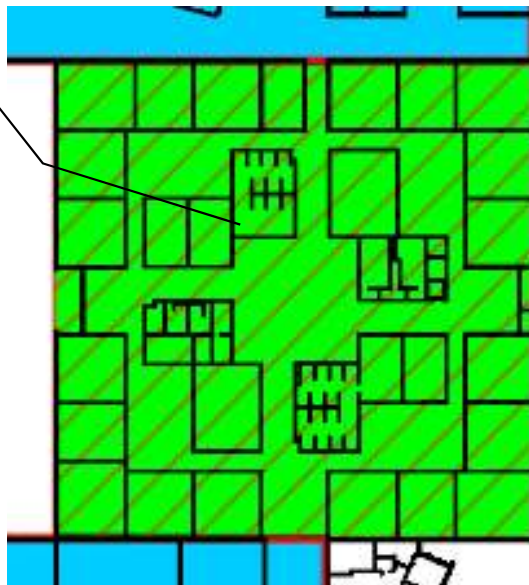
## Upper Level Remodel:

- Science
  - Biology
  - Chemistry
  - Physics
- World Language
- Special Education



## Addition:

- Math

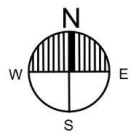
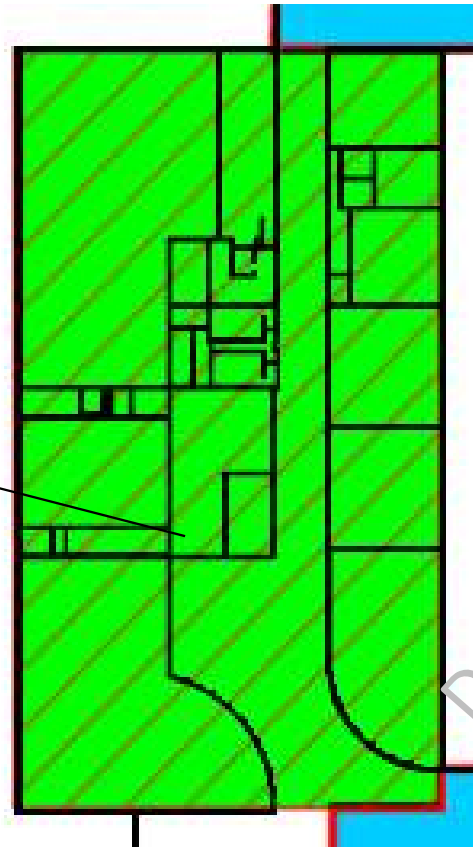


Academics 2 Levels

# Brainerd High School

## Remodel:

- FACS
- Video Production
- Culinary Arts
- Special Education
- Media Center

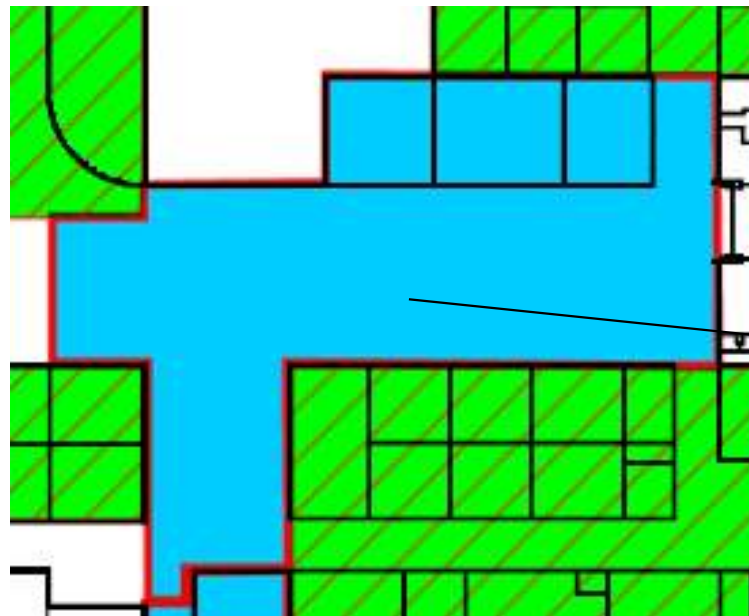


Main Level

# Brainerd High School

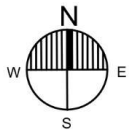


Draft Space Concept



## Addition:

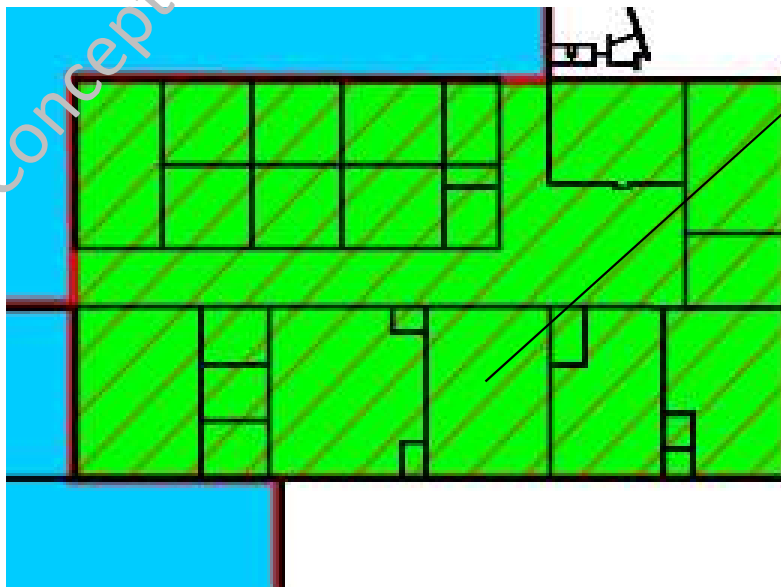
- Commons/Cafeteria
- Core Circulation
- Health Service
- Staff Work Room
- Student Success Center



Main Level

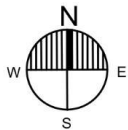


# Brainerd High School



## Remodel CTE:

- Store Fronts to commons area
- Updated CTE Spaces
- Arts/Photography
- Nursing
- Woods / Metals
- Ind. Tech. / Ag.
- Welding
- Decoy Design
- Business Ed.
- CAD / Graphics



Main Level

# Brainerd High School

Remodel:

- Health & Wellness
- School Store
- A La Carte

Remodel:

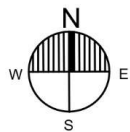
- Convert Old Pool to Gym

Addition:

- Gymnasium

Addition:

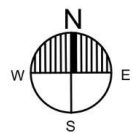
- 8-Lane Competitive Pool
- Diving Well
- Locker Rooms



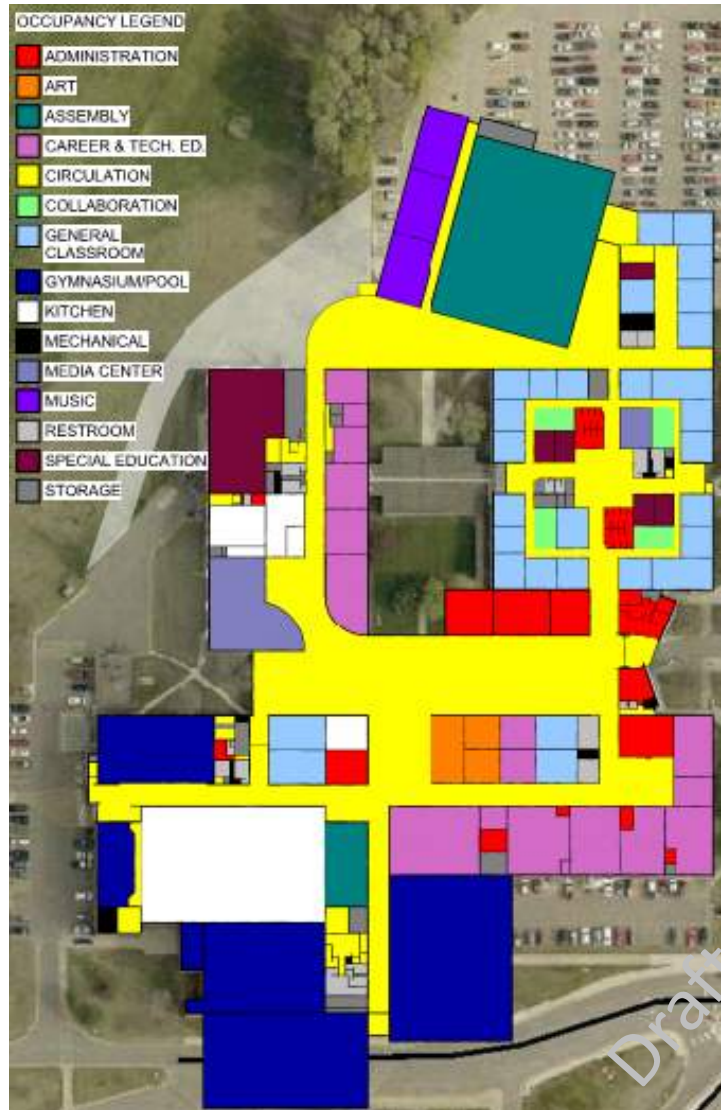
Main Level



# Brainerd High School



Main Level



## High School Project Highlights:

- Improved Security and Supervision
- Renovate Existing Facility Throughout to Modernize
- Combine North And South Campus Spaces To Create Programming And Operational Efficiencies
- Additions For Classrooms, Athletics (Gym And Pool), Performing Arts Auditorium and Commons Entry
- Reconfigure Kitchen To Improve Food Service Efficiency
- Improved and Enhanced Career and Technical Education
- Provide Dedicated Collaborative Spaces For Students And Staff



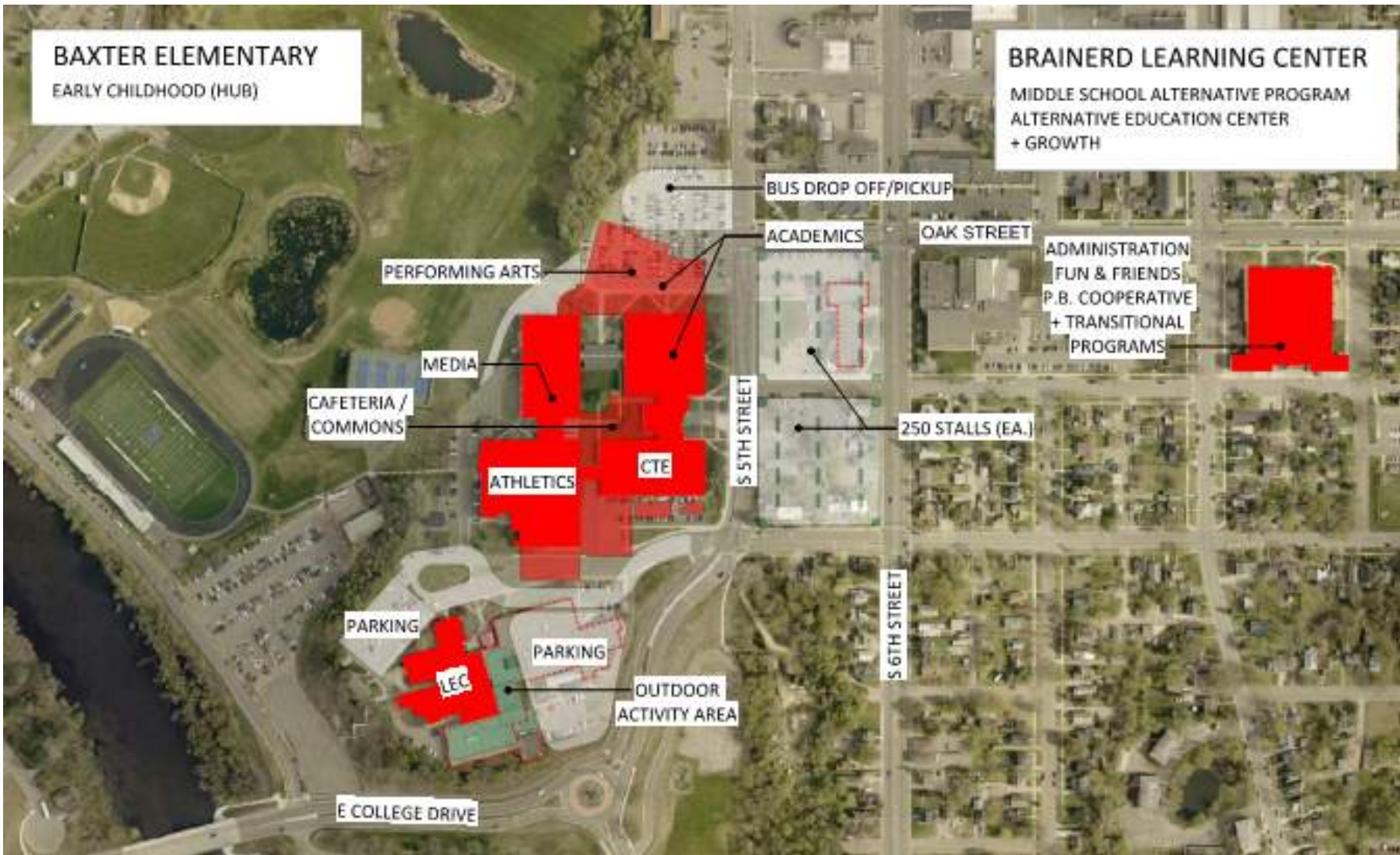
# Brainerd High School

## Brainerd High School

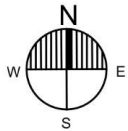
*Existing*

*Proposed*

| CATEGORY  | COLOR | COLOR |
|---|-------|-------|
| 1 Classroom Size and Suitability                      | R     | G     |
| 2 Cafeteria/Kitchen/Serving                           | Y     | G     |
| 3 Security and Supervision                            | R     | G     |
| 4 Main Office/Nurse/Support Services                  | Y     | G     |
| 5 Science Classrooms/Labs                             | R     | G     |
| 6 Art Classrooms/Labs                                 | Y     | G     |
| 7 Music Classrooms/Practice Areas/Etc.                | Y     | G     |
| 8 Staff Lounge/Collaborative Planning Areas           | G     | G     |
| 9 Student Commons/Break-Out Areas                     | R     | G     |
| 10 Phy Ed./Athletics/Gym/Locker Rooms/Pool Etc.       | Y     | G     |
| 11 Site Suitability: Fields/Green Space/ Storage Etc. | G     | G     |
| 12 Parking/Bus Drop-Off: Staff/Students/Parents       | R     | G     |
| 13 Technology   | Y     | G     |
| 14 Library/Media Center: Location/Size/Layout         | Y     | G     |
| 15 Special Education/Support Services                 | Y     | G     |
| 16 Auditoriums/Performing Arts Spaces                 | R     | G     |
| 17 Career and Technical Education                     | Y     | G     |
| 18 Hallways/Lockers/Washrooms/Maint. space            | R     | G     |



# Early Childhood Hub



## Secondary Schools Budget Summary

|                                   | Budget Estimate |
|-----------------------------------|-----------------|
| • High School - South Campus      | \$ 10M-\$11M    |
| • High School - North Campus      | \$ 78M-\$83M    |
| • Lincoln Education Center (Demo) | \$ 500,000      |
| • Brainerd Learning Center        | \$1.5M-\$2M     |
| • Baxter Early Childhood Hub      | \$ 9M-\$10M     |
| • WESB                            | \$1.5M-\$20M    |



---

# Traffic Studies

## Forestview and High School

# Traffic Studies

## Forestview and High School

- Traffic Counts – 48-hour Turning Movement Counts
- Additional Data Collection - Observations of Traffic Operations and Circulation of Vehicles, the Stopped Time for Drop-off/Pick-ups, and Other Aspects Associated with School Travel
- Prepare Outline Detailing The Base Information Gathered In The First Two Tasks
- Meet With City And School Officials To Discuss Existing Conditions
- Develop Up To Three Options For Improvements
- Concept Drawings And Cost Estimates

---

# Scientific Public Survey Update



---

# Timeline to Referendum

