

Communications Workgroup

Informing and engaging our residents

Brainerd Schools

- Karla Sand
- Cori Reynolds
- Sarah Porisch

Rapp Strategies

- Todd Rapp
- Rita Beatty
- Sarah Oliver

Our Work Continues

- Biweekly meetings with Rapp Strategies
- Community/Business Partner Facilities Overview Meetings
- Updating Communications Grid
 - Work completed to date
 - February vote; April vote

Our Work Continues

- Updating Blueprint181.org
 - FAQs
 - Videos
 - Related news and documents

Our Work Continues

- Anticipating Needed Collateral
 - News Releases (including Viewpoint181)
 - Ads
 - Radio (Community Focus segment)
 - Social Media Posts
 - Biweekly Staff eNews
 - Stakeholder emails
 - Handouts (placemat, trifold, etc)

Finance Workgroup

- LTFM – Annual funding (pay as you go)
- LTFM – Bonds
- Capital Bonds
- Alternative Facility Bonds
- Abatement Bonds
- Lease Levy Bonds
- Operational Efficiency Financing
- New Market Tax Credits
- Community Partnerships
- General Obligation Bonds

Finance Workgroup

No Direct
Tax Impact

- LTFM – Annual funding (pay as you go)
- LTFM – Bonds
- Capital Bonds
- Operational Efficiency Financing
- New Market Tax Credits
- Community Partnerships

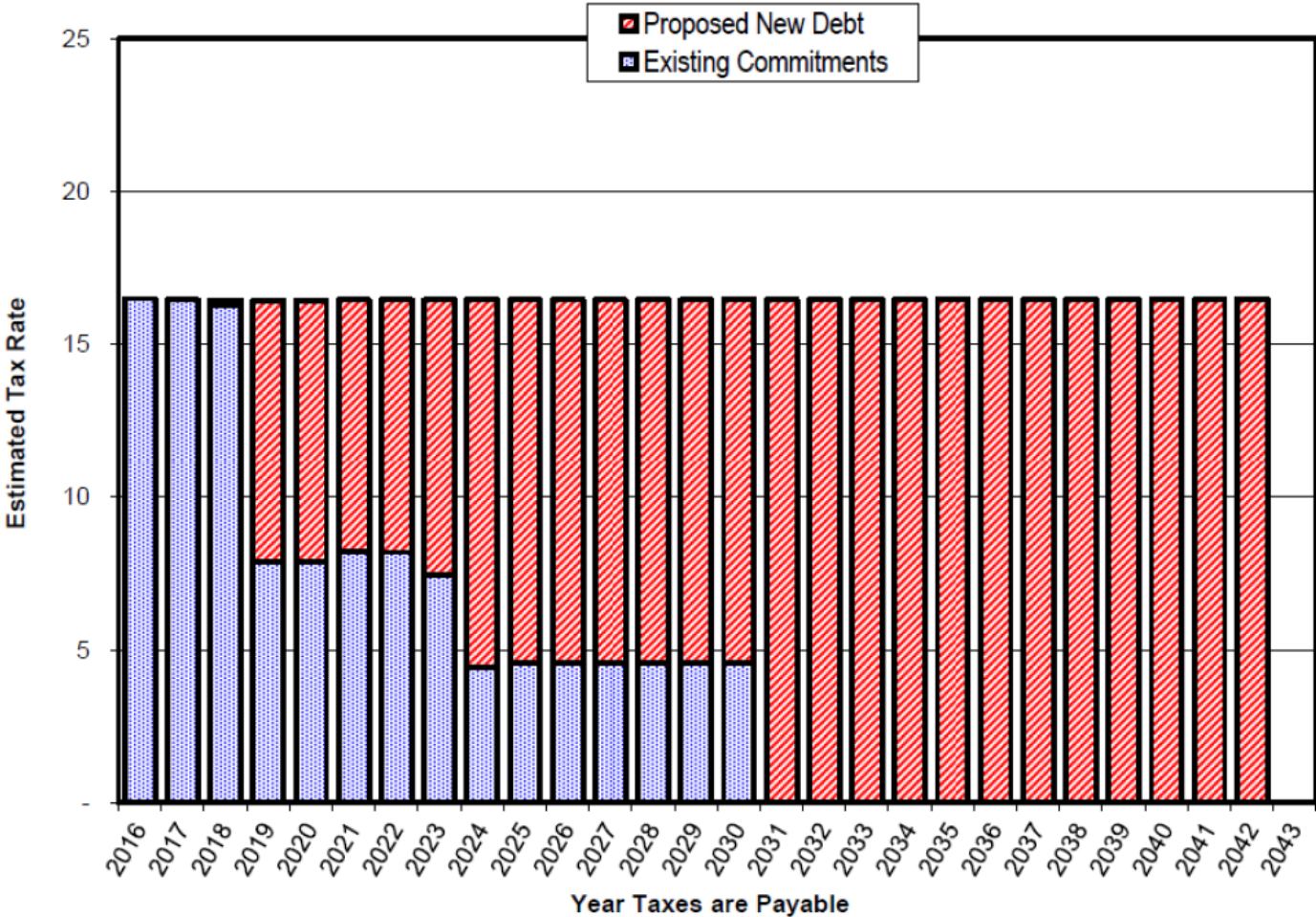
Direct
Tax Impact

- Alternative Facility Bonds
- Abatement Bonds
- Lease Levy Bonds
- General Obligation Bonds

Finance Workgroup

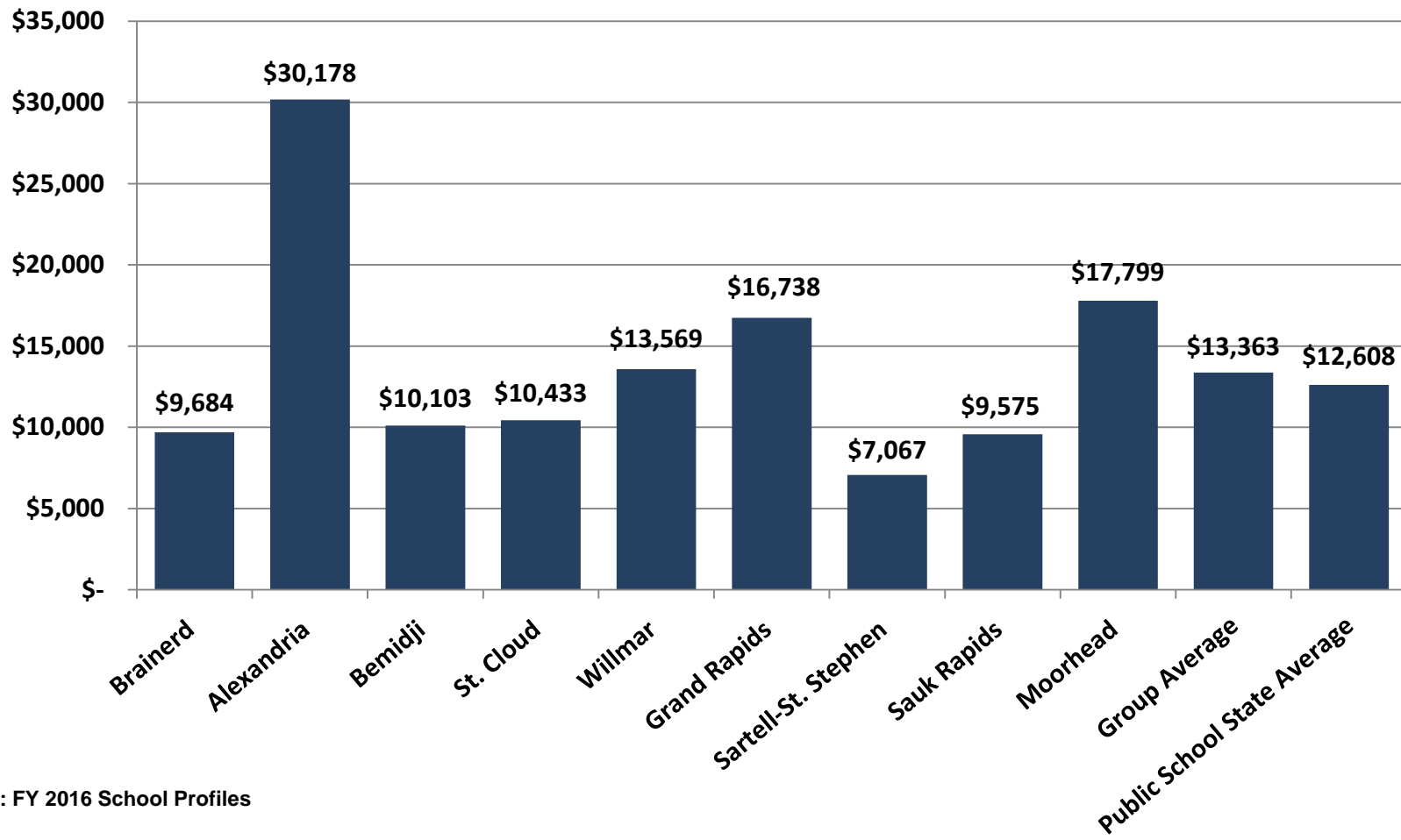
-
- Board Approval
- LTFM – Annual funding (pay as you go)
 - LTFM – Bonds
 - Capital Bonds
 - Alternative Facility Bonds
 - Abatement Bonds
 - Lease Levy Bonds
 - Operational Efficiency Financing
 - New Market Tax Credits
 - Community Partnerships
- Voter Approval
- General Obligation Bonds

Finance Workgroup



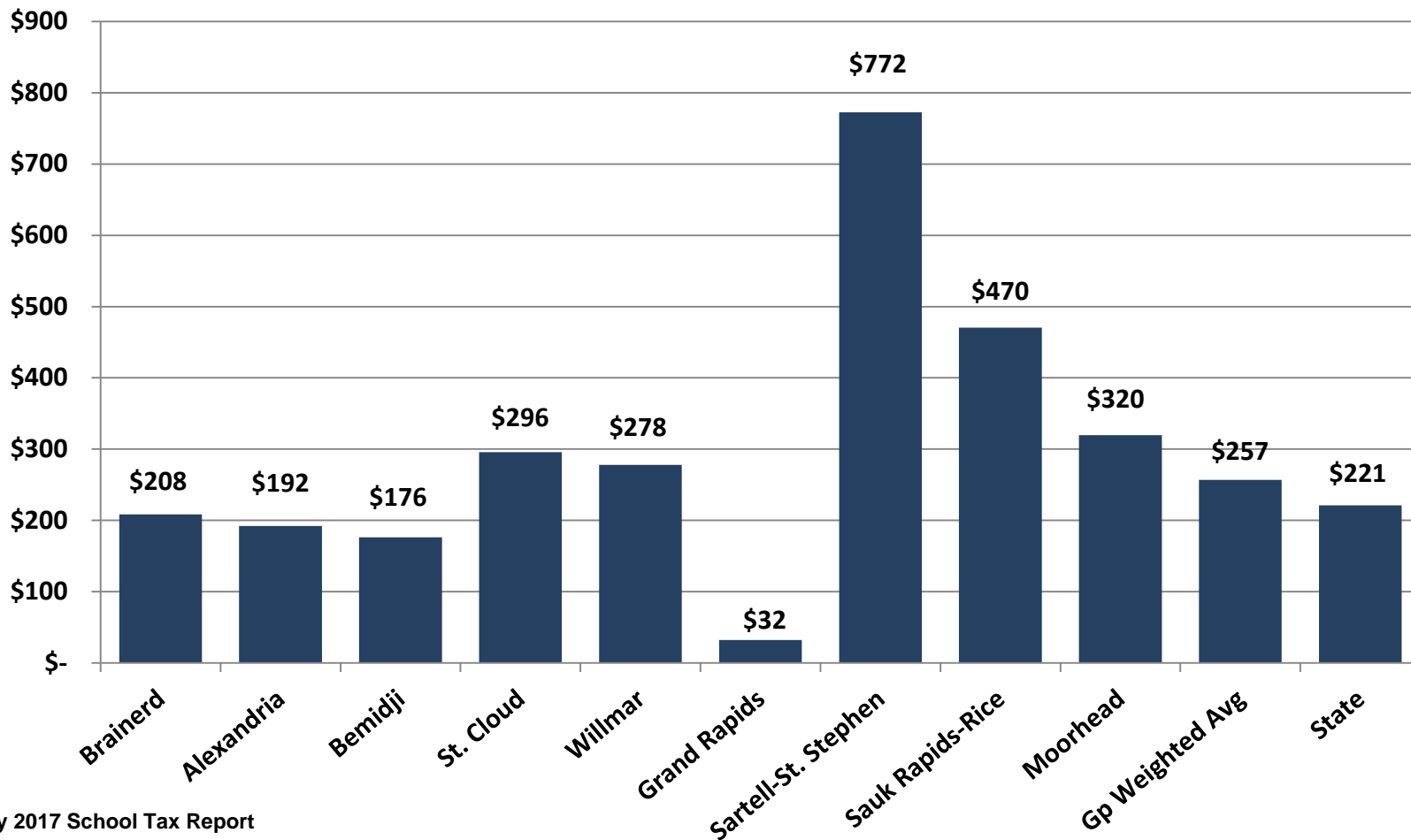
Finance Workgroup

Total Debt Per Student



Finance Workgroup

Total Building Bond Debt Taxes, Payable 2017, on a Home with an Est Market Value of \$200,000



Finance Workgroup

Trends in Municipal Bond Yields August 18, 2017 to September 8, 2017

	August 18, 2017	September 8, 2017	Change
AAA Yields*			
5 Years	1.14%	1.12%	-0.02%
10 Years	1.91%	1.81%	-0.10%
20 Years	2.58%	2.46%	-0.12%
30 Years	2.76%	2.65%	-0.11%
Bond Buyer 20 Bond Index**	3.57%	3.49%	-0.08%

Source:

* Thomson Reuters Municipal Market Data

** The Bond Buyer. Average yield on a portfolio of municipal bonds maturing in 20 years, with an average rating of AA/Aa2.

Finance Workgroup

20-Bond Index Last 24 Months – By Week



Finance Workgroup

20-Bond Index 1970 – Present

