

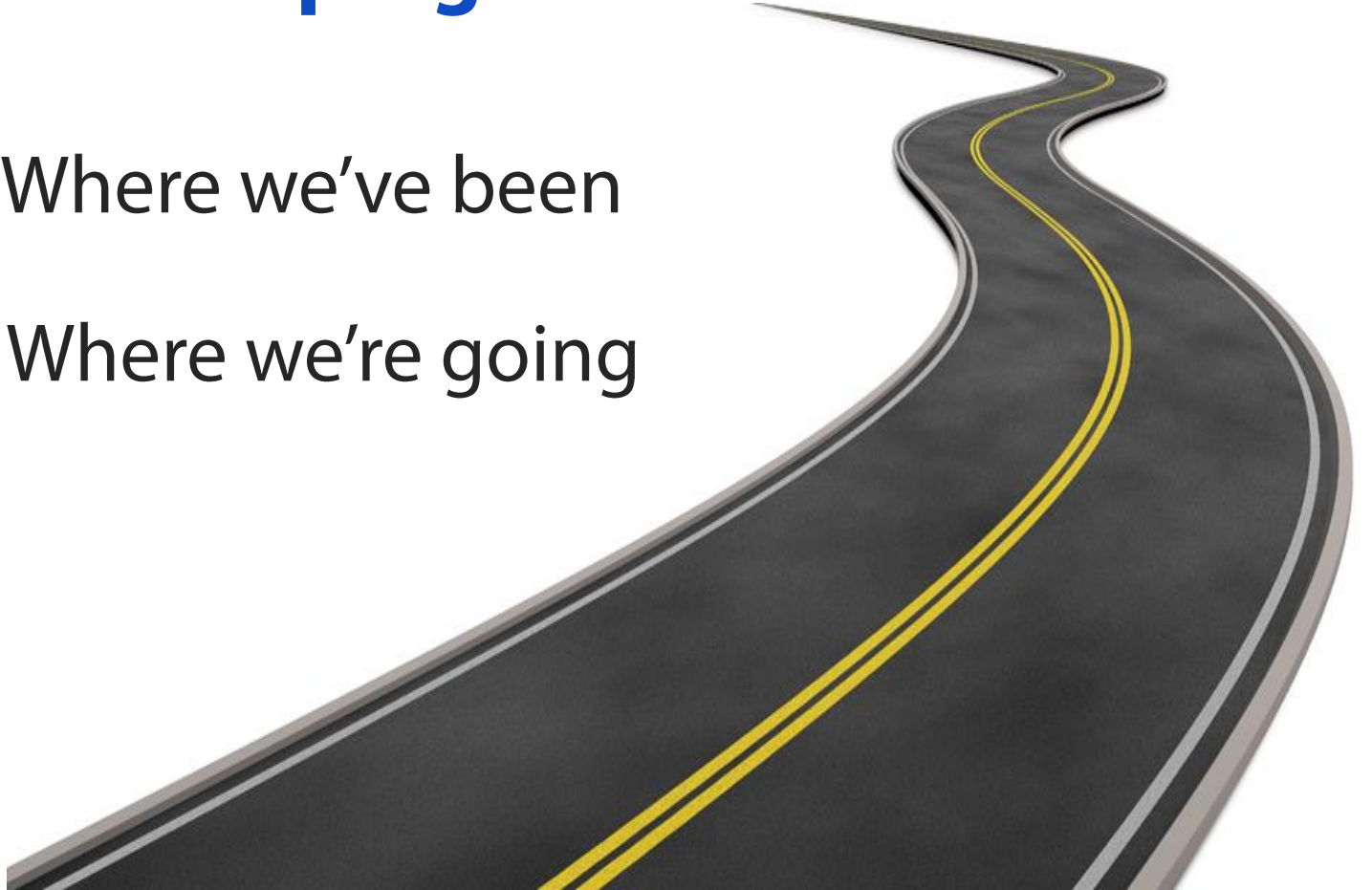


# *Blueprint 181*

*Investing. Growing. Leading.*

# Developing a Facilities Plan

- Where we've been
- Where we're going



# Why Are We Here?



- Share Information

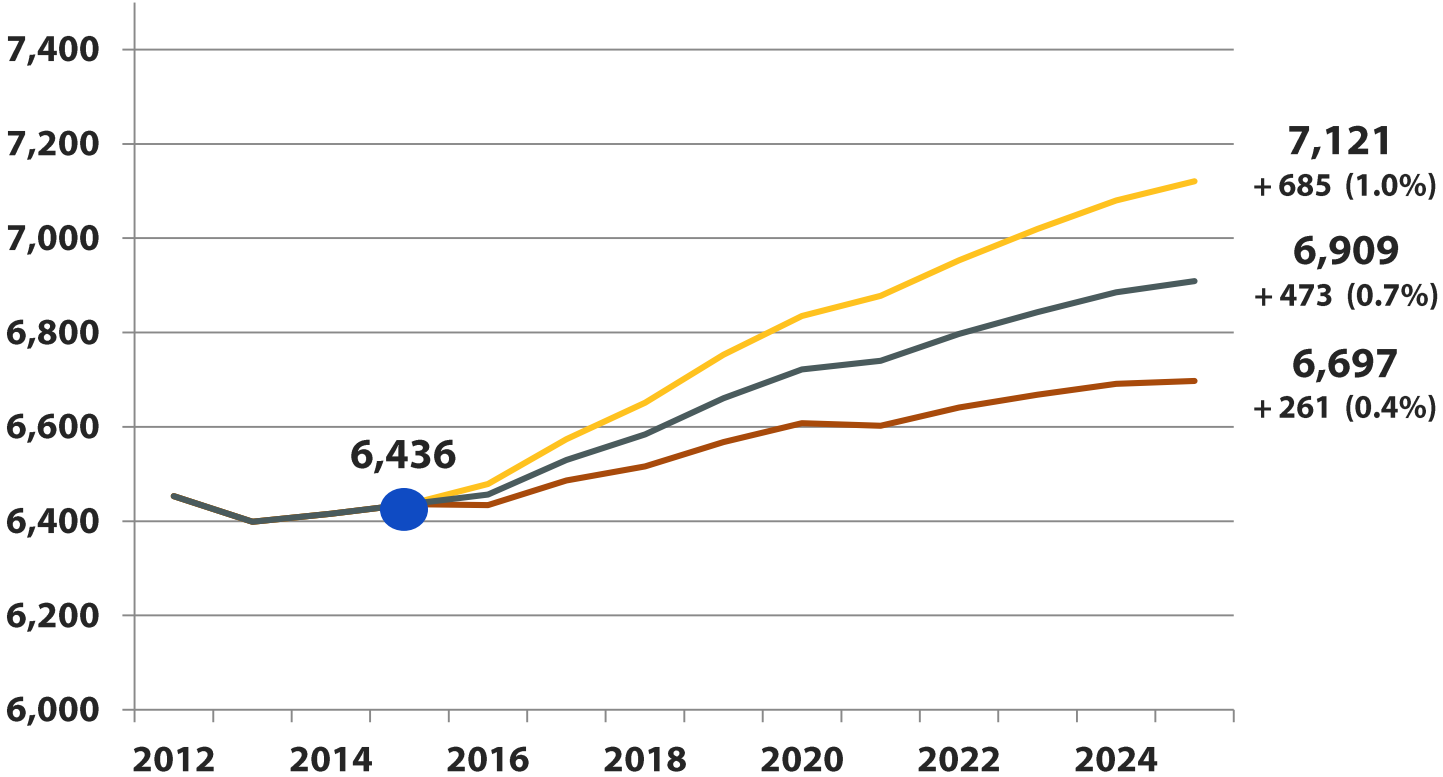
- Gather Feedback

# Starting The Process

## Gathering and Understanding Information

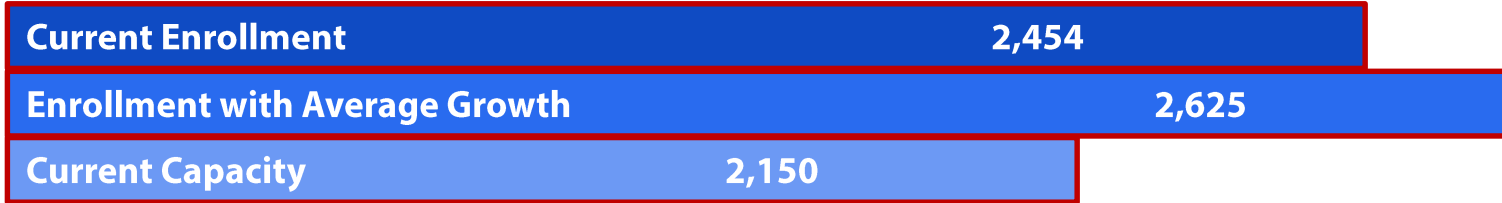
- Demographics and Enrollment
- Capacity of our Schools
- Condition of our Schools

# Projected Enrollment Growth



# Capacity Of Our Schools

## Elementary Schools



300 → 475

## Middle School



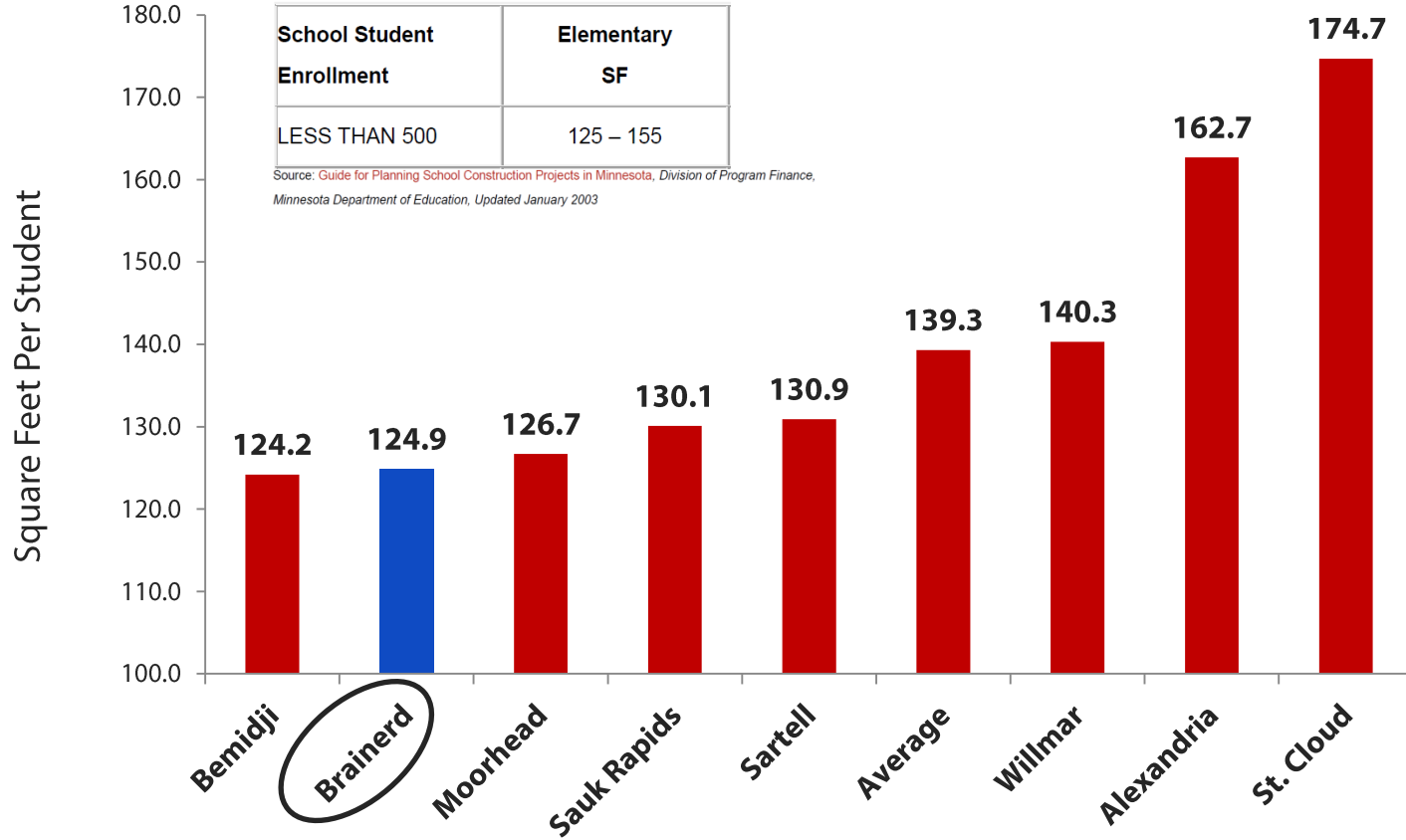
## High School



# Space in our Schools



# Elementary School Space Comparison







## BEMIDJI SCHOOL REFERENDUM: Voters approve new school

By [Bethany Wesley](#) on Nov 5, 2014 at 1:08 a.m.



BEMIDJI -- It was a yes-yes vote for schools on Tuesday as voters passed both questions in the referendum to authorize funding to construct and operate a new fourth- and fifth-grade elementary school.



# Groundbreaking for new Moorhead Elementary School

Wed 9:44 PM, May 04, 2016



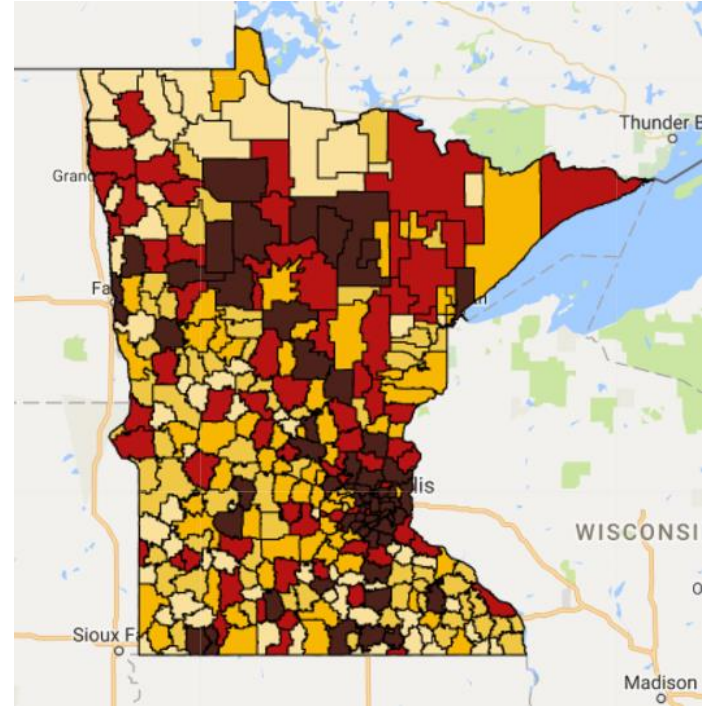
**MOORHEAD, Minn. (Valley News Live)** -- Moorhead Public Schools celebrated the start of construction on their newest school on Wednesday.

The new 110,000 square foot k-4 elementary school will be located along 24th avenue south and 42nd street south.

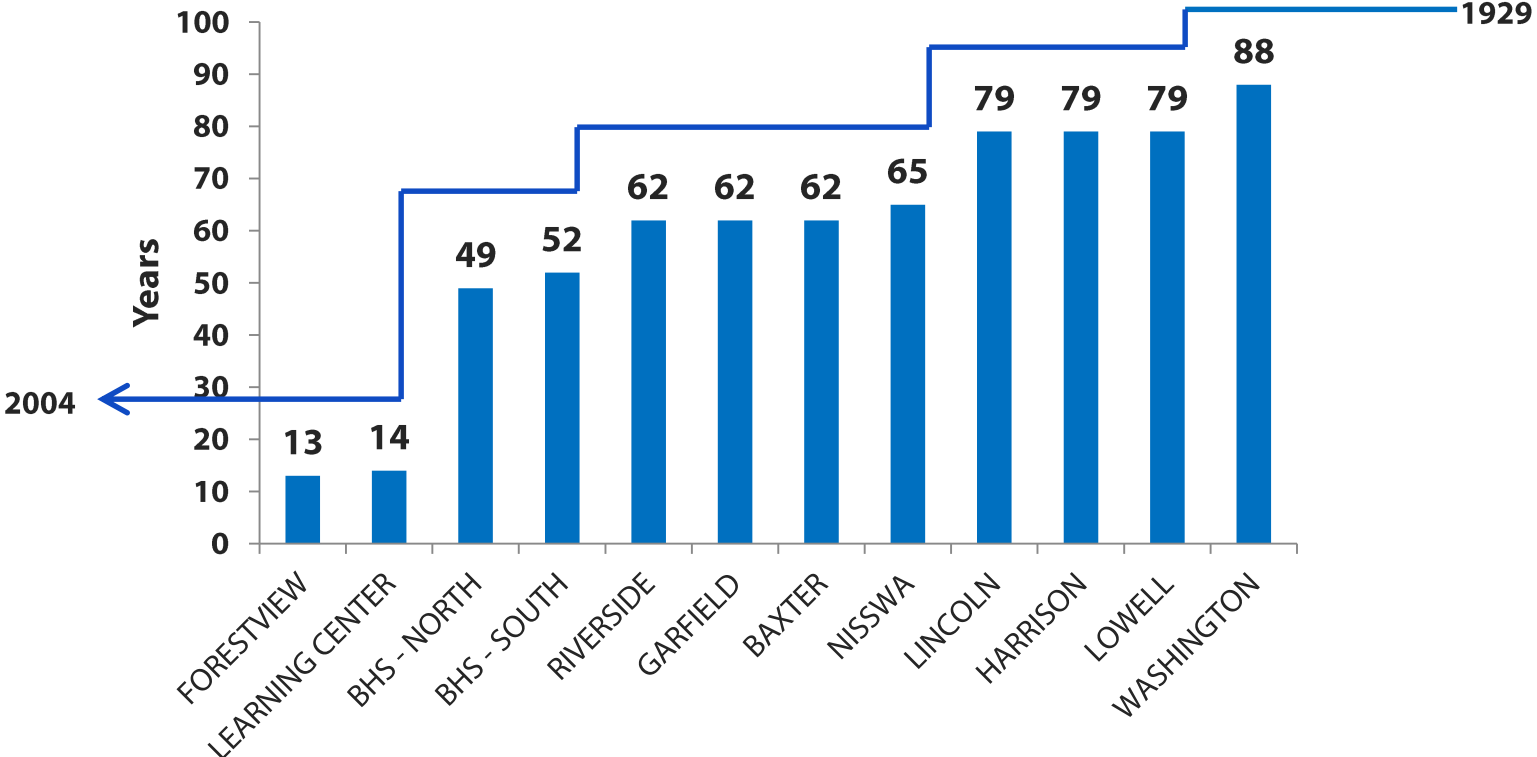
Parents, teachers and students are excited for the school's opening for the fall of 2017.

# Our School District

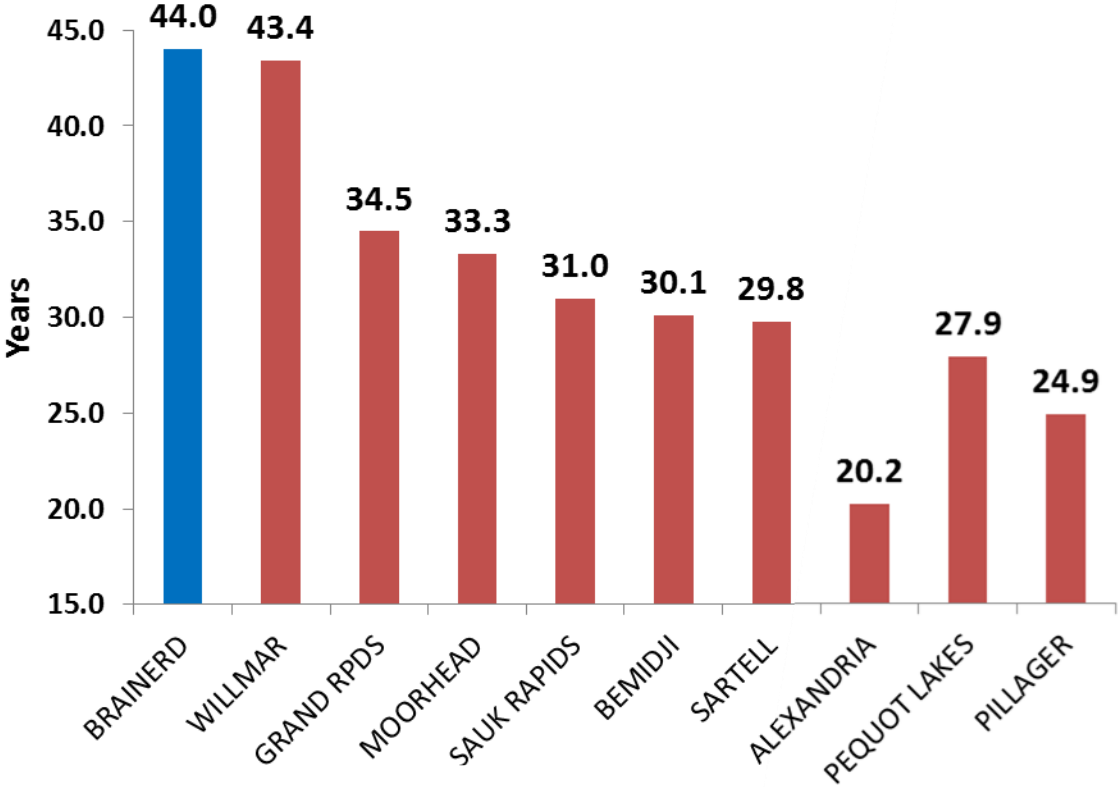
- 516 Square Miles
- 12 Facilities
- 1.2 Million Square Feet
- 289 Acres of Land



# Age of Our Schools



# Average Age Comparison



## Willmar voters approve new school, but not field house

By [Linda Vanderwerf](#) on May 19, 2015 at 10:54 p.m.



WILLMAR — Willmar Public Schools voters approved the first and largest part of a two-question bond referendum Tuesday.

Question 1, a wide-ranging \$53.25 million project, was approved by a vote of 2,661 in favor and 2,297 against.

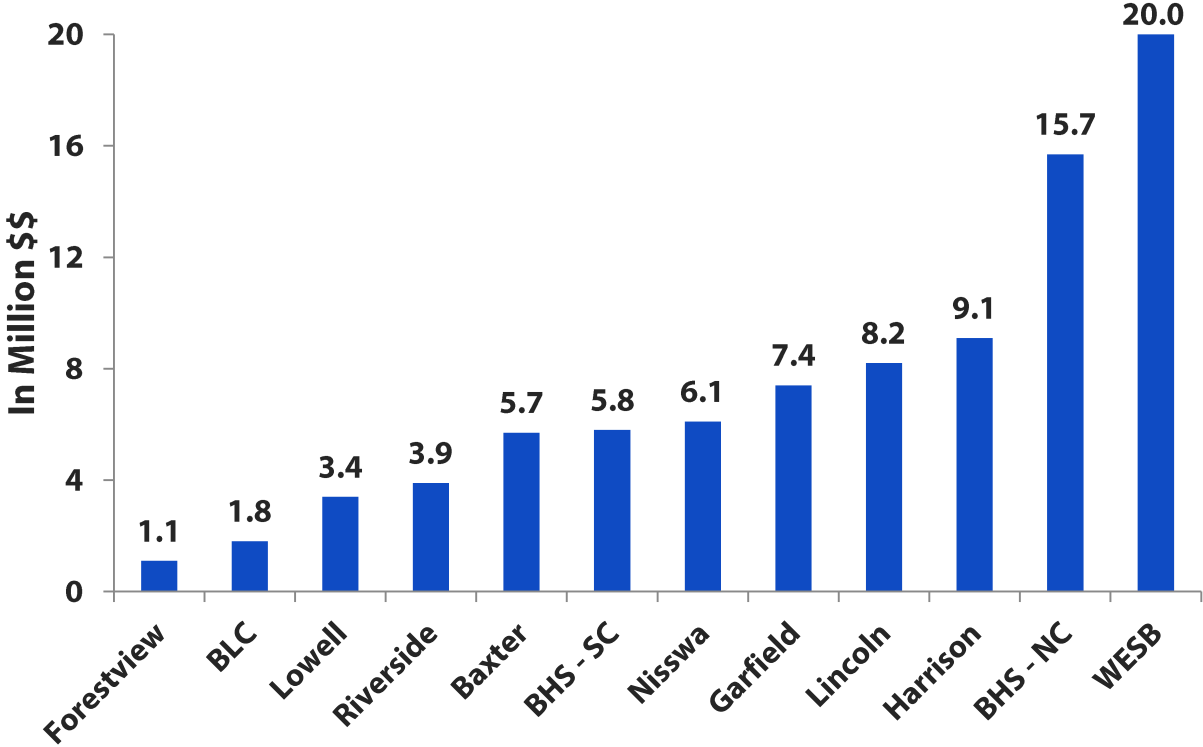
With the passing of Question 1, the school district can look forward to building a \$27 million elementary school to ease overcrowding in its existing schools.

A second question, seeking \$7.75 million for a field house at Willmar Senior High, failed 2,227 in favor and 2,707 against.

# Future Maintenance

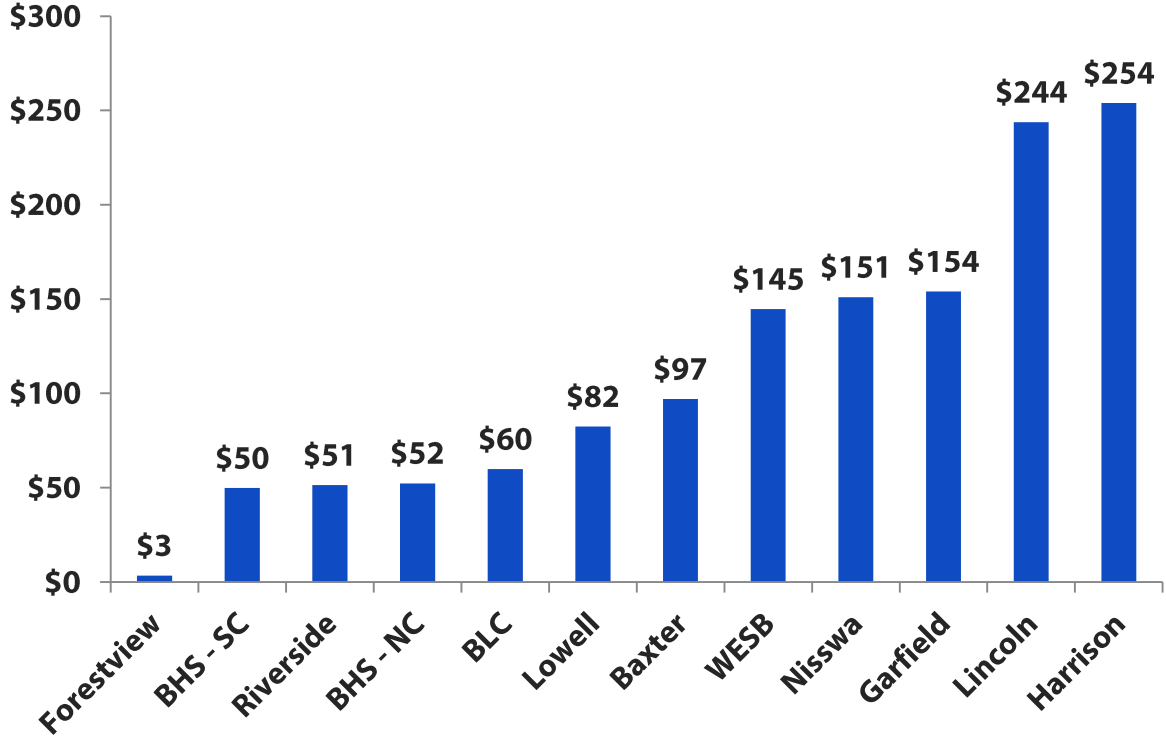


# Future Maintenance Costs





# Future Maintenance Costs Per Square Foot



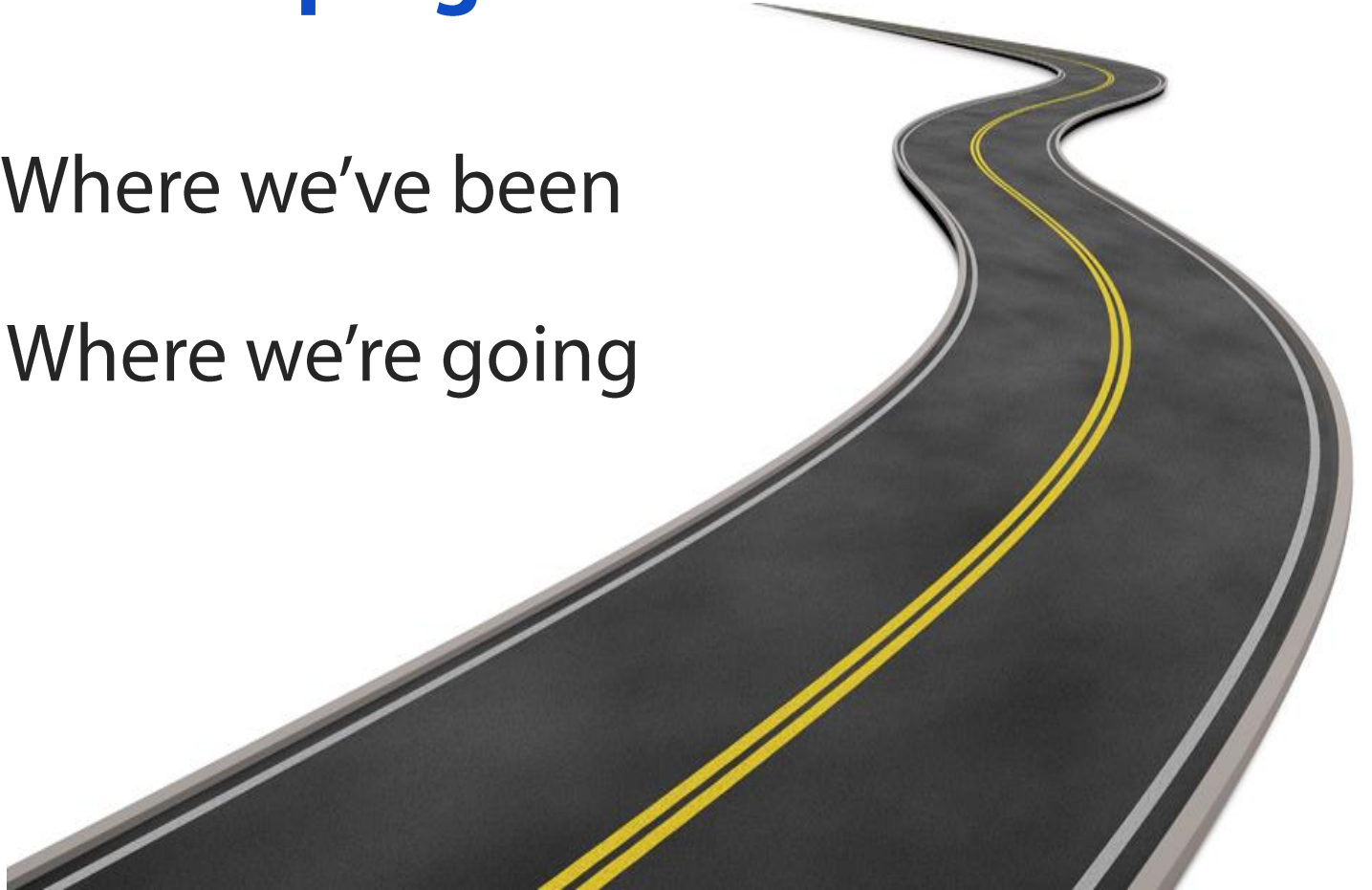
# Imagining Solutions – Discovering Opportunities

- **R**ightsize
- **R**enewal
- **R**einvest
- **R**epurpose
- **R**ecreate



# Developing a Facilities Plan

- Where we've been
- Where we're going



# Our Overall Goal

## Facilities that Promote...

*Opportunity, Innovation and Success*

### Eight Objectives:

- Safe and secure facilities
- Mechanical and educational adequacy updates
- Space that fosters best practice instruction & 21st Century opportunities
- Spaces that promote robust opportunities in academics, arts, activities, & athletics
- Increased community collaboration, ownership and workforce development
- Visionary technology integration
- Transparency, engagement, and community trust-building
- Highest quality educational opportunities for our taxpayers' generous investment

# Plan Execution Phases

- Phase 1 – Comprehensive District Communications Planning
- Phase 2 – Stakeholder Engagement: Internal & External Listening Sessions
- Phase 3 – Potential Surveys & Assessments
- Phase 4 – Develop Project Scope Options & Alternatives
- Phase 5 – Bond Referendum Election Process
- Phase 6 – Comprehensive Construction Management Service

# Phase 1 – Communications Planning

## Two Communication Objectives

Communicate a vision for educational achievement for students

Provide residents with the information they need to evaluate the bond referendum proposal



# *Blueprint 181*

*Investing. Growing. Leading.*

# Phase 2 – Stakeholder Engagement

- Education-based listening sessions
  - Teachers
  - Administrators
  - Support Staff
  - Students
- Community Stakeholder listening sessions
  - School Board
  - Parents
  - Civic Groups
  - Business Community Partners
  - School Centered Neighborhoods
  - Community Members



# Review & Analyze Stakeholder Input

- Review the recorded priorities identified by the stakeholder groups
- Identify Common Threads





# Phase 3 – Surveys & Assessments

- Public Polling and Survey Data
- Voter Profile Analysis
- Review of Demographic and Enrollment Data
- GIS Student Mapping
- District Financial Review

# PHASE 4 – Develop Options and Alternatives

School Board

Facilities Committee

Administrative Committee

- Project Costs and Budgeting
- Quantifying and Comparing Operating Costs/Savings
- Plan For Existing Facilities
- Potential Site Selection & Property Acquisition
- Financial Impact To Taxpayers
- Project Timeline Impacts To Project Costs
- Building and/or Program Transition Planning



# Phase 5 – Bond Election Process

- Identify a possible date
- Encourage public review of the proposed facilities plan and tax impacts
- Submit plan to Education Department for review
- Develop ballot question(s)

# Phase 6 – Construction Management

## Continued Collaboration



Follow our progress at...

[www.BLUEPRINT181.org](http://www.BLUEPRINT181.org)

