



Brainerd Public Schools

Opportunity. Innovation. Success.

School Board Retreat

Monday, October 30, 2017

5:00 PM



Brainerd Public Schools

Opportunity. Innovation. Success.

Retreat Overview



Brainerd Public Schools

Opportunity. Innovation. Success.

Process Review

- Goal and Objectives
- Six-Phase Process
- Workflow Chart
- Engagement Process Findings

Our Overall Goal

Facilities that Promote...

Opportunity, Innovation and Success for All Learners

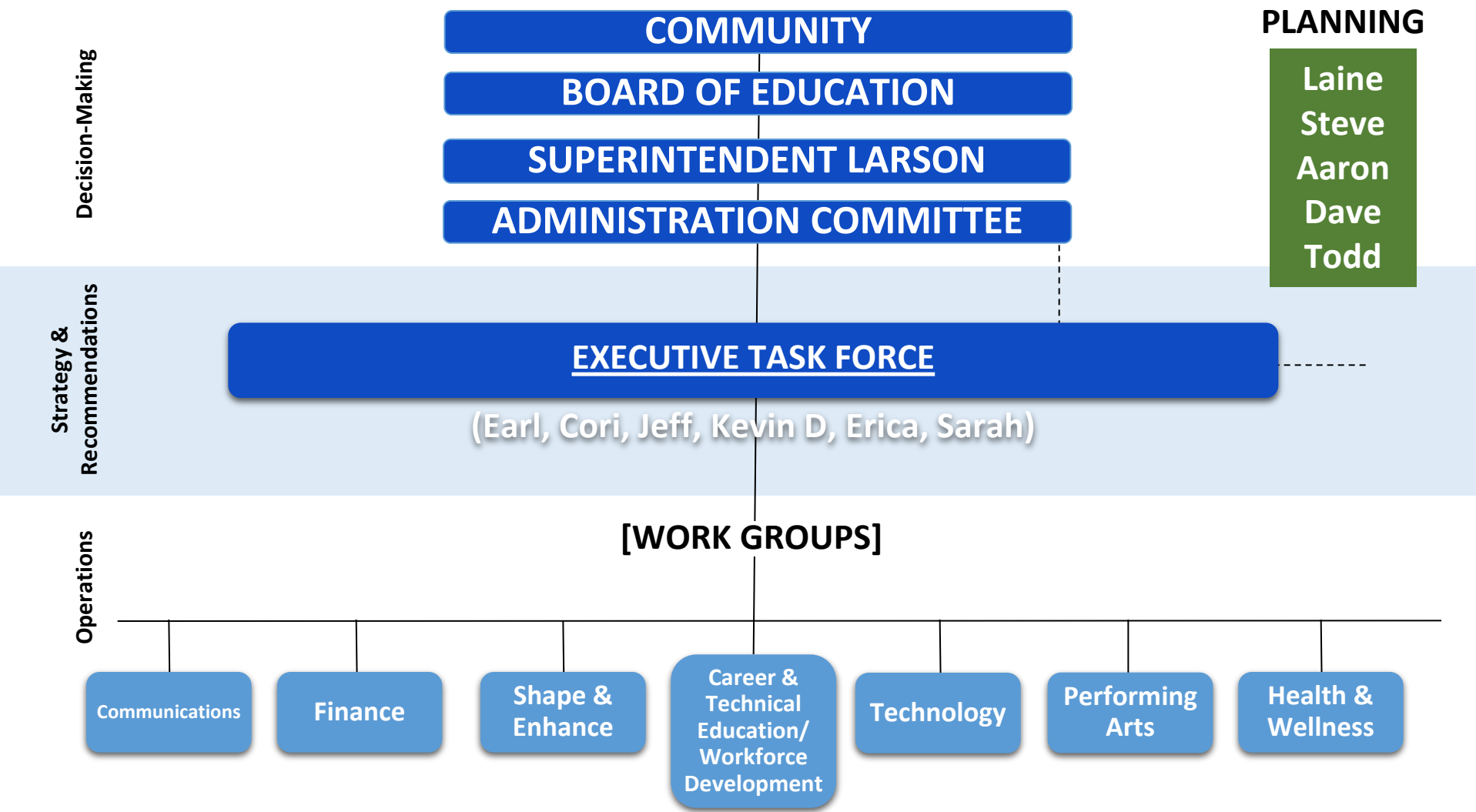
Eight Objectives:

- Safe and secure facilities
- Mechanical and educational adequacy updates
- Space that fosters best practice instruction and 21st Century learning opportunities
- Spaces that promote robust opportunities in academics, arts, activities, & athletics
- Increased community collaboration, career & technical education opportunities, and workforce development initiatives
- Visionary technology integration
- Transparency, engagement, and community trust-building
- Highest quality educational opportunities for our taxpayers' generous investment

6 Phase Process



Workflow Chart



Findings from Stakeholder Input

- Great Teachers and Staff
- Quality Educational Opportunities
- Neighborhood Schools – Very Important
- High School Campus Location – Valued Part of Community
- Business Community Desires...
 - Enhanced Communication
 - Workforce Development Partnerships
 - Robust Career/Technical Education Opportunities
 - Comprehensive Technology Integration
- Forestview – Quality Facility with Appropriate Amount of Space
 - All of the other schools have significant needs

Findings from Stakeholder Input

- Lack of Physical and Functional Space at Elementary Schools
- Lack of Functional Space at the Secondary Schools,
- Inequitable Educational Delivery
- Facilities Faced with Significant Deferred Maintenance Needs
(With Exception Of Forestview Middle School)
- Safety and Security Concerns Across District
- Parking and Pick Up-Drop Off Concerns Across District
(Need For Separation of Bus/Parent Drop Off-Pick Up)



Brainerd Public Schools

Opportunity. Innovation. Success.

Phase IV

Develop Project Scope Options and Alternatives

BLUEPRINT 181 PLANNING PROCESS

PHASE I, II, III

INPUTS

- 1) Community Outreach
- 2) Stakeholder Engagement
- 3) Cunningham Report
- 4) Work Groups
- 5) Surveys and Assessments



PHASE IV

THE PLAN

- 1) **Investments**
 - Objectives
 - Prioritization
 - Equity
- 2) **Financing**
 - Current Maintenance Dollars
 - State-Authorized Levies
 - Referenda
- 3) **Schedule**
 - Public Vote
 - Draft Design and Construction Plan

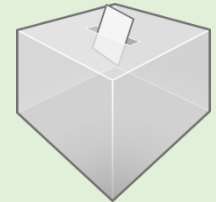
LEGAL REQUIREMENTS

- 1) Election Date
- 2) Ballot Questions
- 3) Review and Comment
- 4) Public Notice

PHASE V

REFERENDA ELECTION

- 1) Community Outreach
- 2) Stakeholder Engagement
- 3) Advocacy Committee
- 4) Early Voting
- 5) Election Day





Brainerd Public Schools

Opportunity. Innovation. Success.

Phase III

Surveys and Assessment Results

- **Scientific Survey Results**
- **Online Supporting Survey Results**
- **Traffic Study Update**
- **MN Department of Education Visit**
- **Comprehensive Financial Review**



Brainerd Public Schools

Opportunity. Innovation. Success.

Survey Results

- **Scientific Survey Results**
- **Online Supporting Survey Results**



Brainerd Public Schools

Opportunity. Innovation. Success.

Traffic Study

- **Traffic Study Update**
- **Review Timeline of Study Results**



Brainerd Public Schools

Opportunity. Innovation. Success.

MN Department of Education

- **Update regarding recent visit**

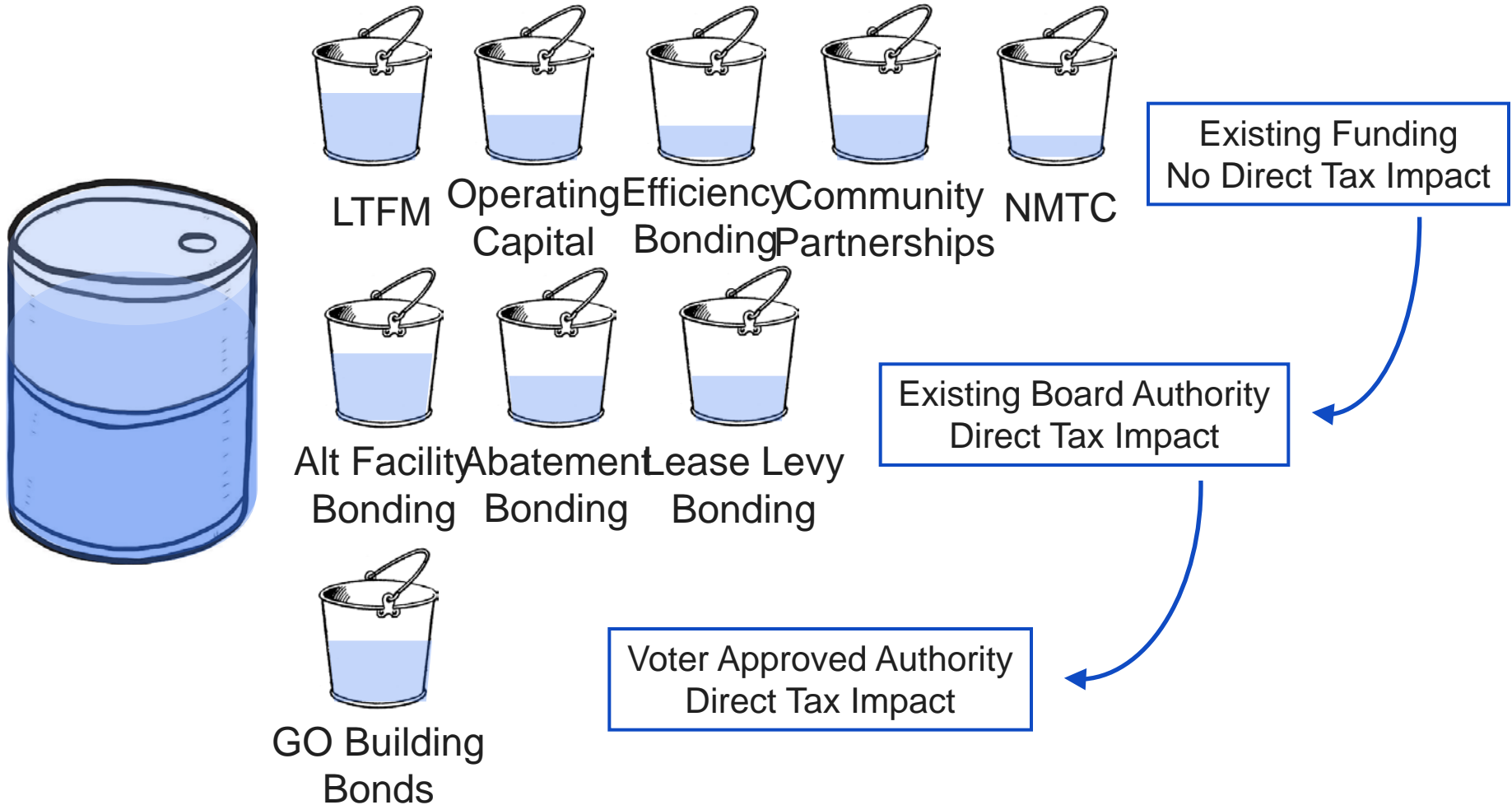


Brainerd Public Schools

Opportunity. Innovation. Success.

Comprehensive Financial Review

Project Funding Options and Alternatives



Tax Impact

- Amount of Debt
- Debt Structure
- Property Tax Base



Spruce County
Jane Smith, Auditor-Treasurer
345 12th Street East, Box 78
Spruceville, MN 55555-5555
(555) 345-6789
www.co.spruce.mn.us

TAXPAYER(S):

John and Mary Johnson
123 Pine Rd S
Spruceville, MN 55555-5555

Property Information

PIN Number: 01.234.56.789.R1 **Property Address:** 789 Pine Rd S
Spruceville, MN 55555

Property Description:
Lot 1, Block 1, Spruce Acres Subdivision

PROPOSED TAXES 2017

THIS IS NOT A BILL. DO NOT PAY.

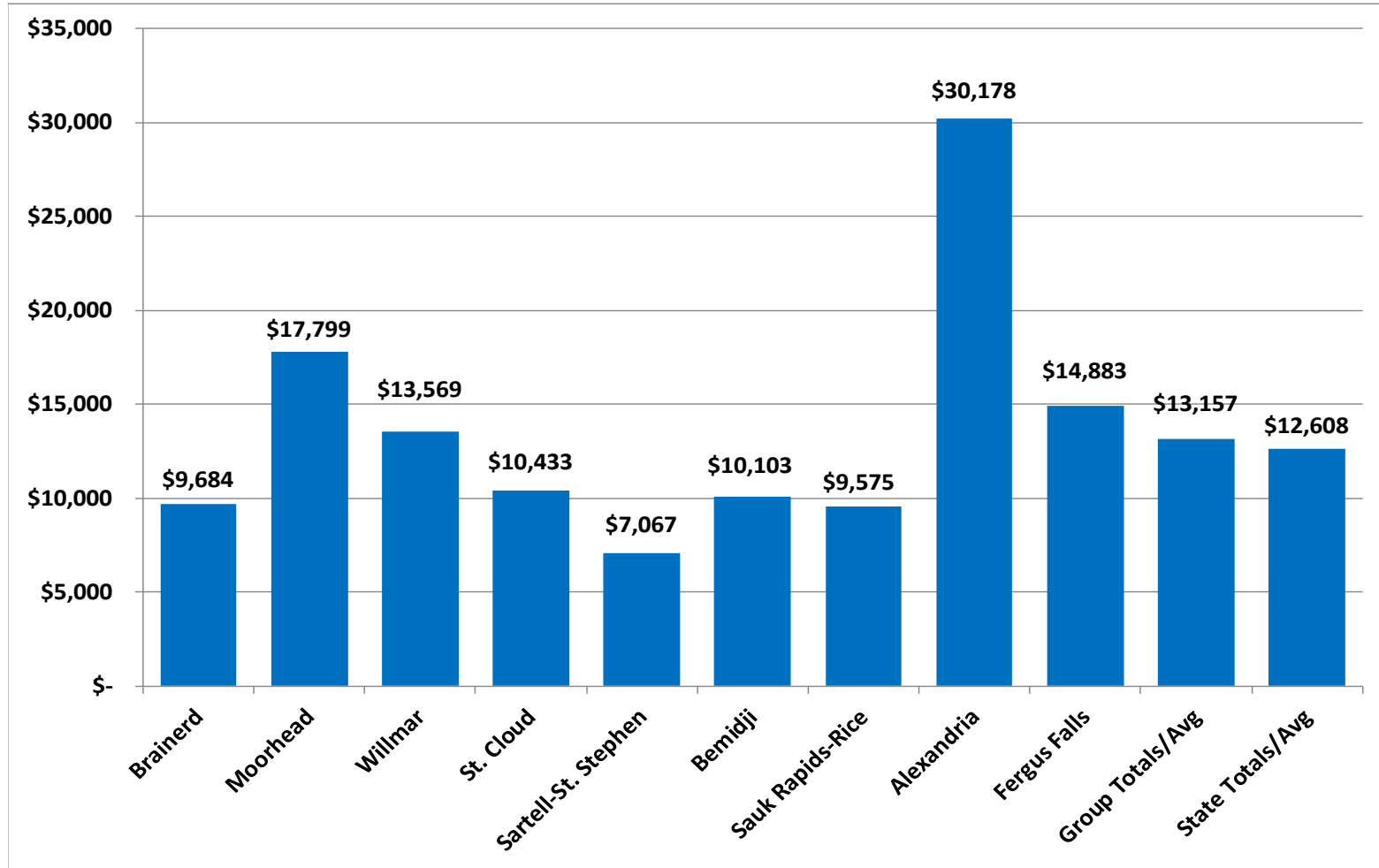
| VALUES AND CLASSIFICATION | | | |
|--|------------------------|------------|------------|
| Step | | 2016 | 2017 |
| 1 | Taxes Payable Year | | |
| | Estimated Market Value | \$125,000 | \$150,000 |
| | Homestead Exclusion | \$ | \$23,800 |
| | Taxable Market Value | \$125,000 | \$126,200 |
| | Class | Res NHmstd | Res Hmstd |
| Step | PROPOSED TAX | | |
| 2 | Proposed Tax | | \$1,467.52 |
| Step | PROPERTY TAX STATEMENT | | |
| 3 | Coming in 2017 | | |
| The time to provide feedback on PROPOSED LEVIES is NOW It is too late to appeal your value without going to Tax Court. | | | |

Proposed Property Taxes and Meetings by Jurisdiction for Your Property

| Contact Information | Meeting Information | Actual 2016 | Proposed 2017 |
|--|--|-------------------|---------------------------|
| State General Tax | No public meeting | \$0 | \$0 |
| County of Spruce Spruce County Courthouse 123 Spruce St Spruceville, MN 55555 www.co.spruce.mn.us (555) 123-4567 | December 9, 7:00 PM | \$438.06 | \$484.18 |
| City of Spruceville Mayor's Office 456 Spruce St Spruceville, MN 55555 www.ci.spruceville.mn.us (555) 123-7654 | December 1, 6:30 PM Spruceville City Hall | \$273.79 | \$312.06 |
| Spruceville School District 999 150 1st St N Spruceville, MN 55555 www.spruceville.k12.mn.us (555) 123-6789 | December 2, 7:00 PM Spruceville High School Cafeteria | | |
| Voter Approved Levies | | \$289.35 | \$296.68 |
| Other Levies | | \$340.11 | \$374.60 |
| <i>Your school district was scheduled to hold a referendum at the November general election. If the referendum was approved by the voters, the school district's voter approved property tax for 2017 may be higher than the proposed amount shown on this notice.</i> | | | |
| Total excluding any special assessments | | \$1,341.31 | \$1,467.52 9.0% |

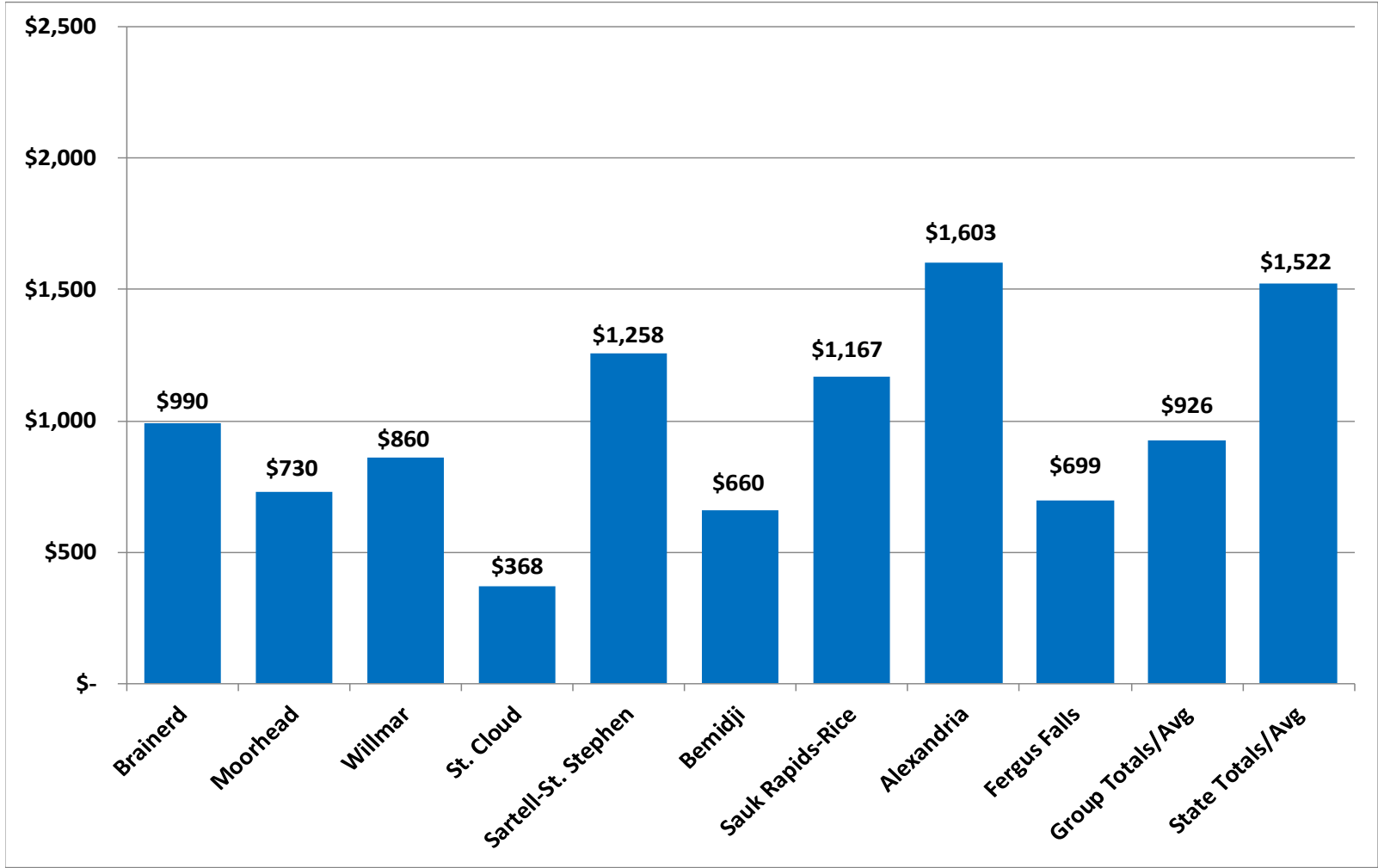
Brainerd School District No 181

Long-Term Debt per Pupil



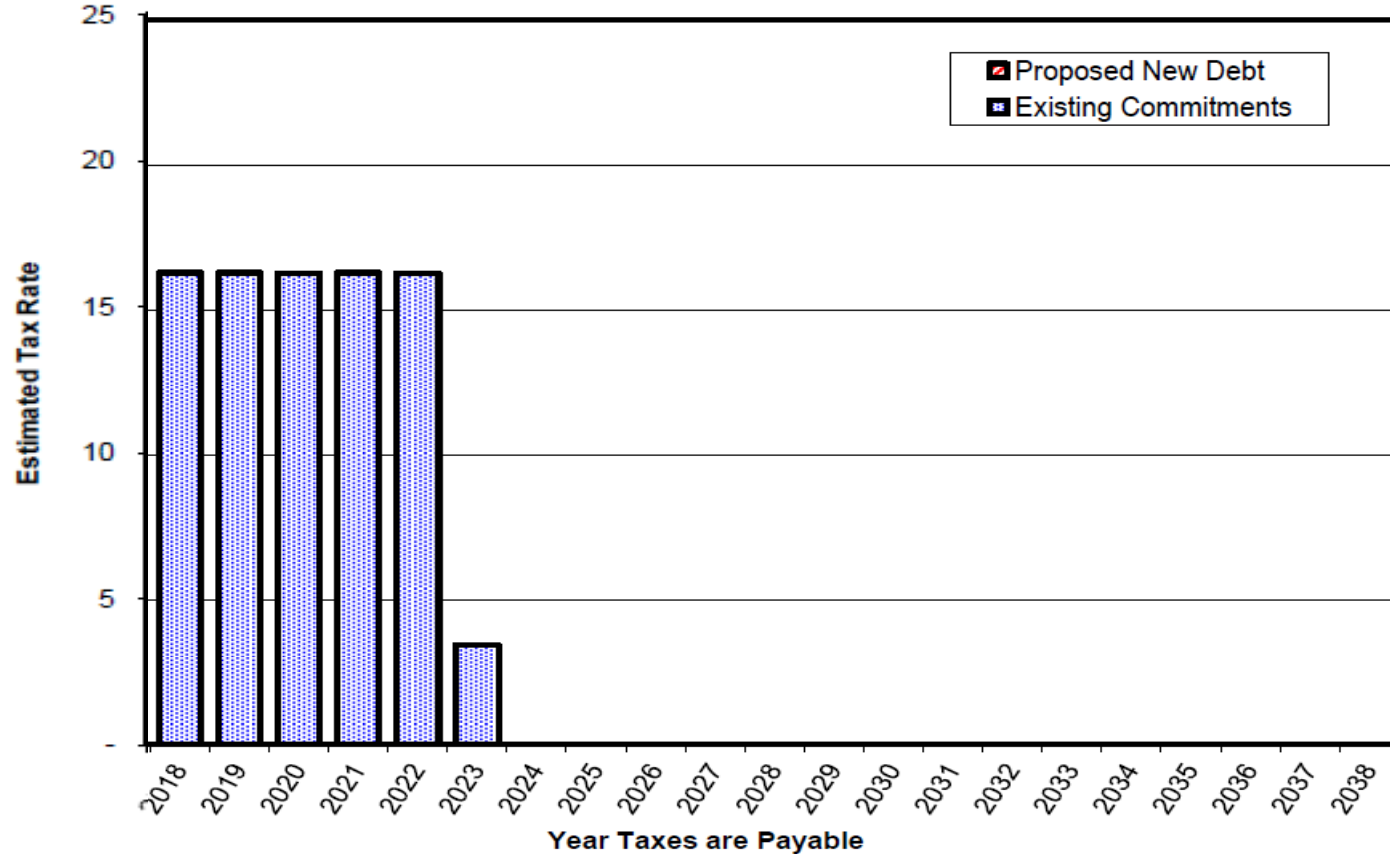
Source: FY 2016 School Profiles

Brainerd School District No 181
Debt Service Payments per Student (ADM)

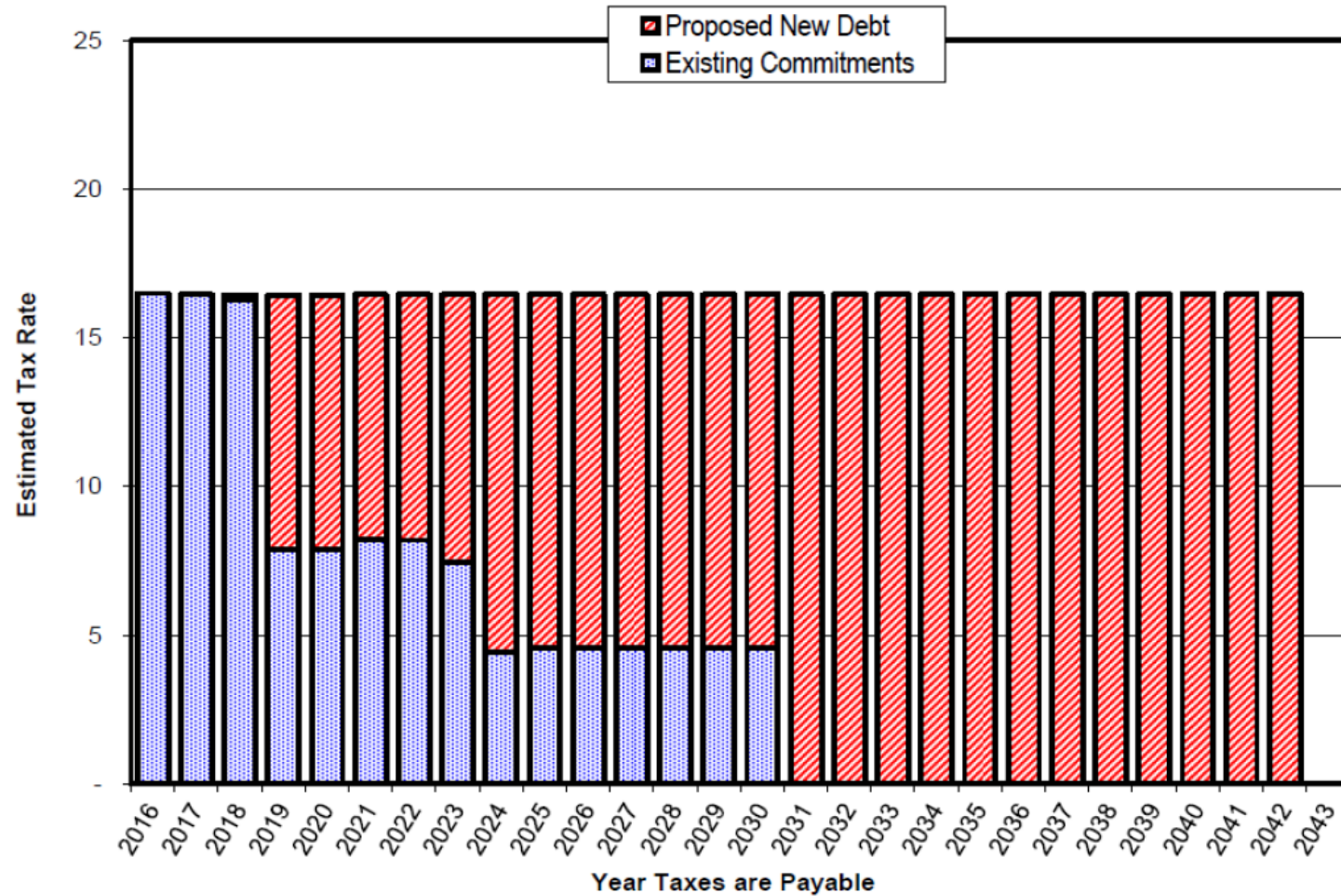


Project Funding Options and Alternatives

School District's Remaining Debt Service



Project Funding Options and Alternatives



Market Value

\$5,064,962,160

| | |
|-----------------------------------|-------|
| Residential Homestead | |
| First \$500,000 | 1.00% |
| Remainder | 1.25% |
| Agricultural Land (non-homestead) | 1.00% |
| Commercial and Industrial | |
| First \$150,000 | 1.50% |
| Remainder | 2.00% |
| Seasonal Recreational Residential | |
| First \$500,000 | 1.00% |
| Remainder | 1.25% |

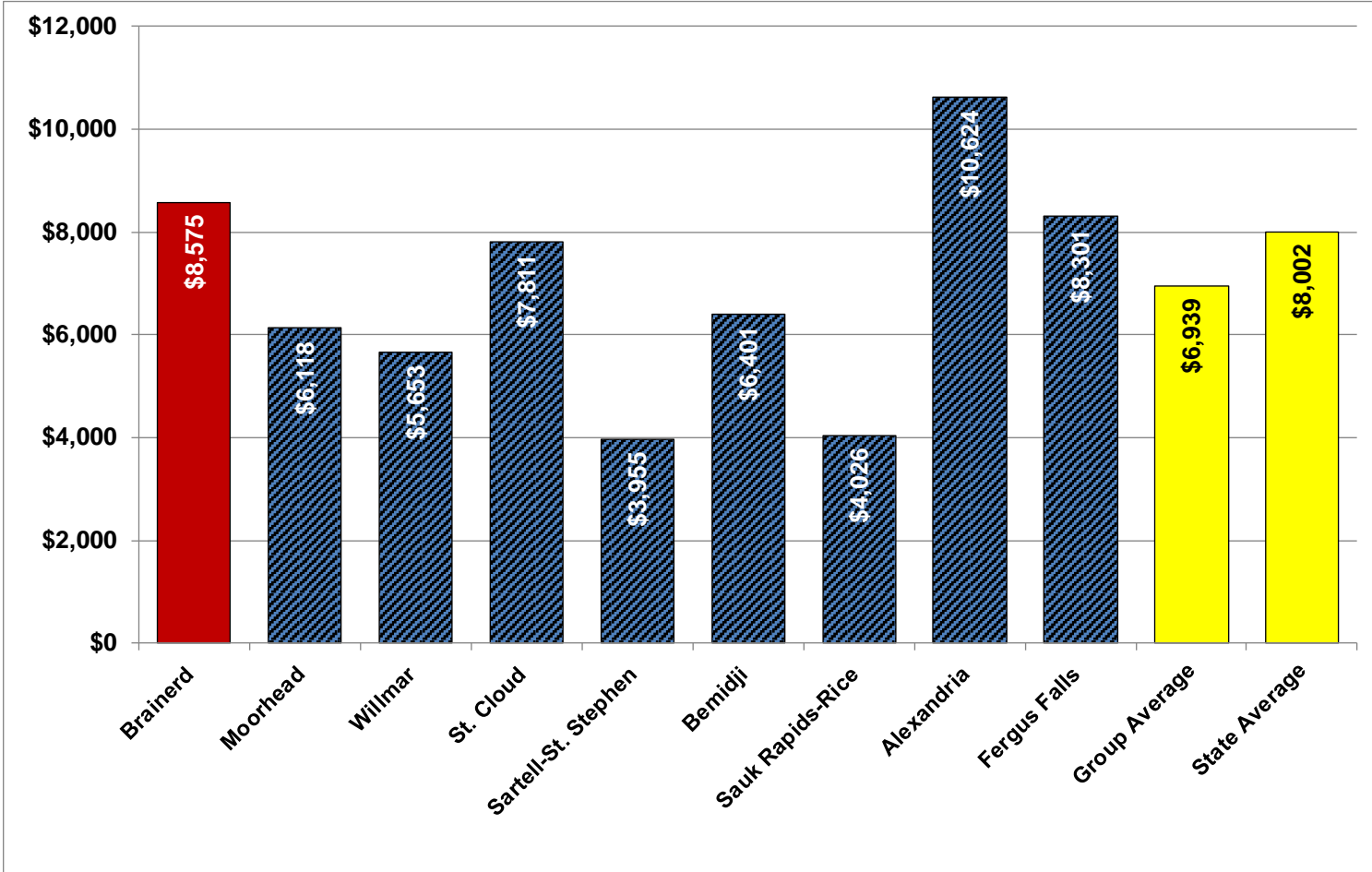


Net Tax Capacity

\$58,184,106

Brainerd School District No 181

Net Tax Capacity Per Pupil - 2017

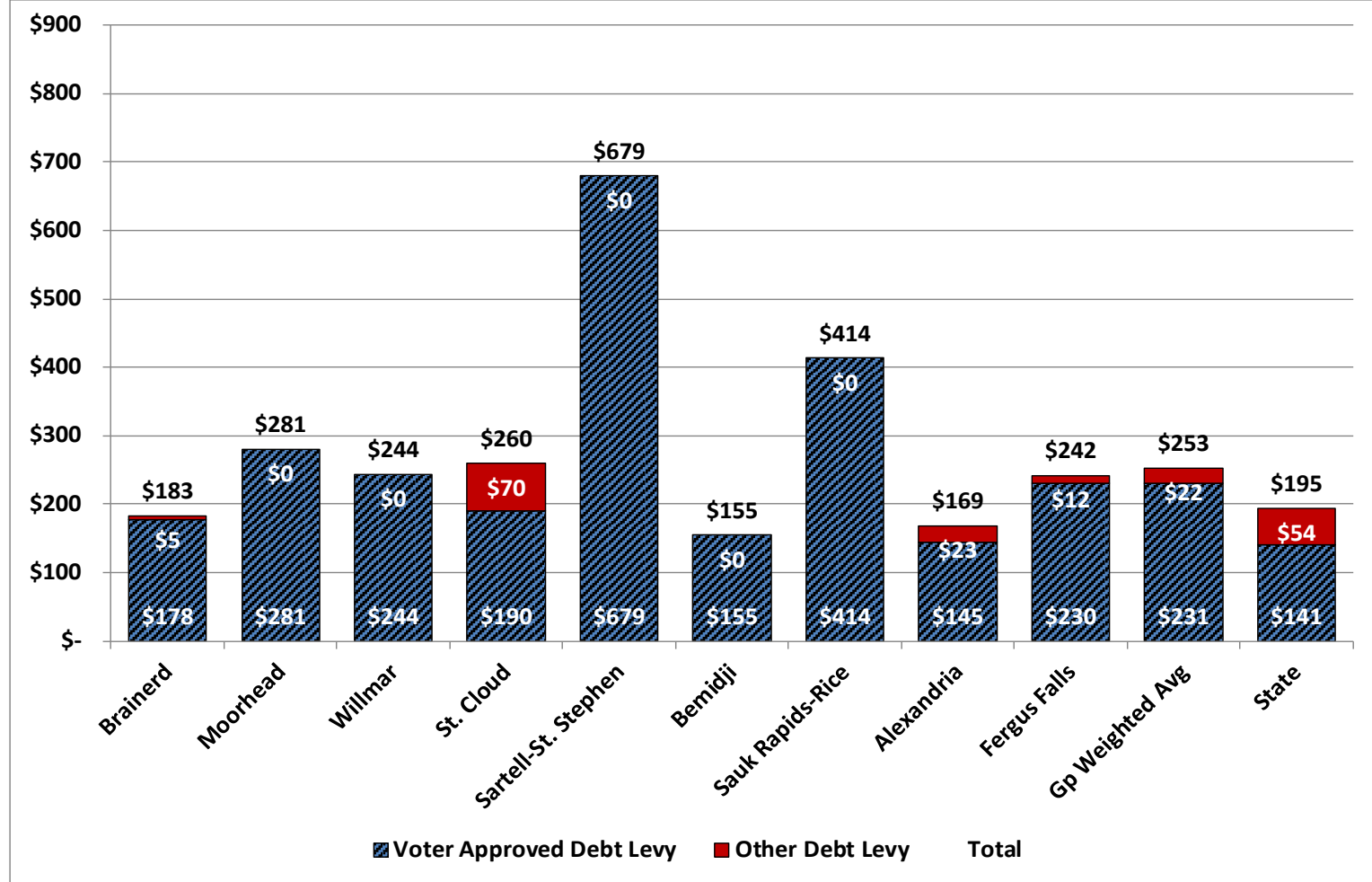


Source: Pay 17 School Tax Report

Pupil: MDE Estimated FY 2018 Enrollment

Brainerd School District No 181

Total School Debt Taxes, Payable 2017, on a Home with an Estimated Market Value of \$180,000



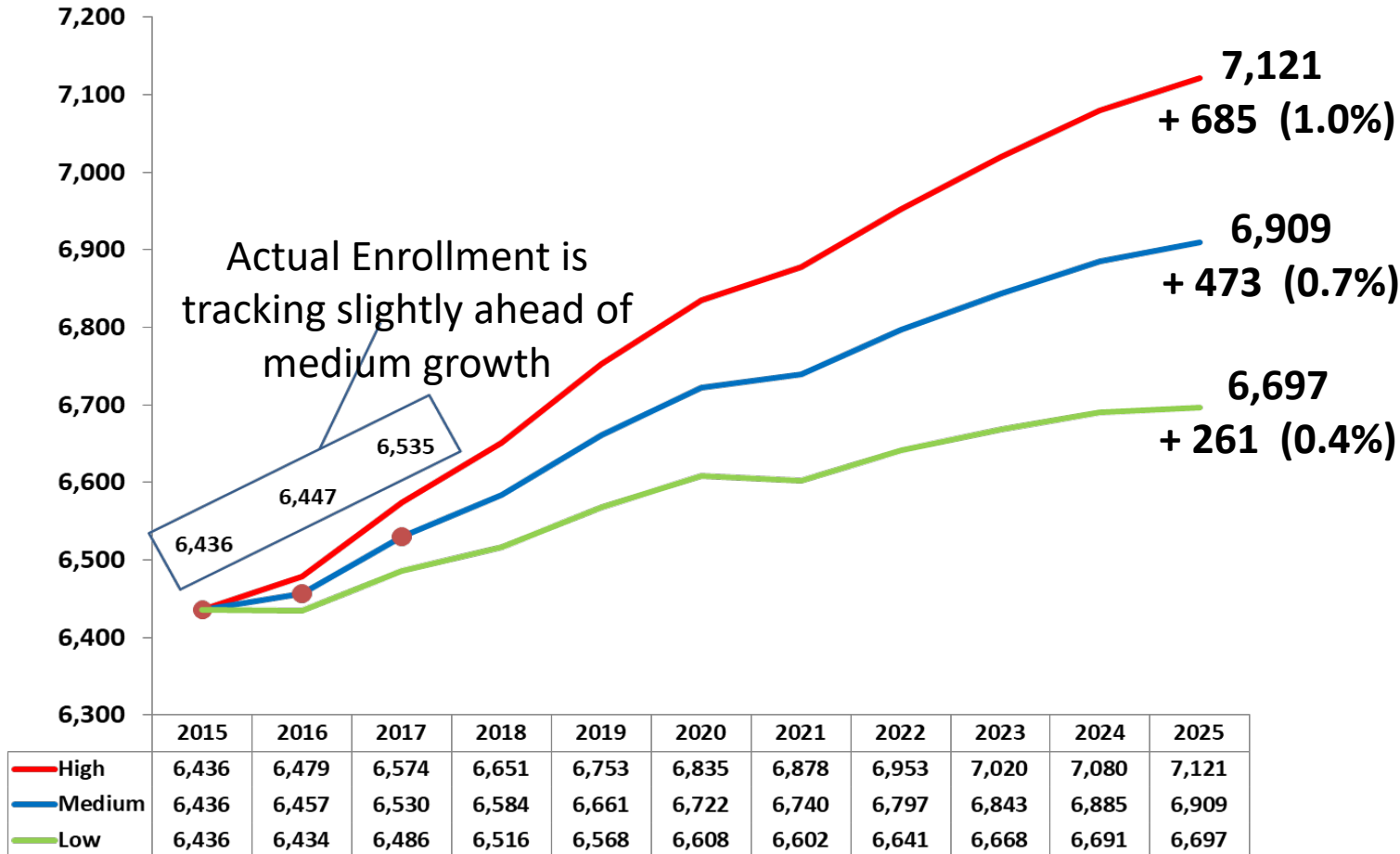


Brainerd Public Schools

Opportunity. Innovation. Success.

Approval of Demographic Study and Enrollment Projections

Projected Enrollment Growth





Brainerd Public Schools

Opportunity. Innovation. Success.

Phase II: Stakeholder Engagement

Elementary Facility Standards, Priorities, Solutions and Spaces

- Safety and Security
- Classroom Size
- STEM
- Special Education
- Technology
- Arts
- Early Childhood
- Accessibility
- Gymnasium / Multipurpose
- Cafeteria / Kitchen
- Playground / Green Space
- Media
- Flexible Space / Conference
- Transportation

| CATEGORY | Baxter | Garfield | Harrison | Lowell | Nisswa | Riverside |
|---|--------|----------|----------|--------|--------|-----------|
| 1 Classroom Size and Suitability | R | Y | R | R | R | Y |
| 2 Cafeteria/Kitchen/Serving | R | R | R | R | Y | R |
| 3 Security and Supervision | R | R | R | R | R | Y |
| 4 Main Office/Nurse/Support Services | R | R | R | R | R | Y |
| 5/6 Science & Art Class/labs | R | R | R | R | Y | R |
| 7 Music Classrooms/Practice Areas/Etc. | Y | Y | R | R | R | G |
| 8 Staff Lounge/Collaborative Planning Areas | R | R | R | R | Y | Y |
| 9 Student Commons/Break-Out Areas | R | R | R | R | R | R |
| 10 Phy Ed./Athletics/Gym/Locker Rooms/Pool Etc. | R | Y | R | Y | R | R |
| 11 Site Suitability: Fields/Green Space/ Storage Etc. | R | Y | R | Y | G | Y |
| 12 Parking/Bus Drop-Off: Staff/Students/Parents | R | R | R | R | Y | R |
| 13 Technology | Y | Y | R | Y | Y | G |
| 14 Library/Media Center: Location/Size/Layout | Y | G | R | R | G | G |
| 15 Special Education/Support Services | R | R | R | R | R | R |
| 16 Auditoriums/Performing Arts Spaces | Y | Y | R | Y | Y | Y |
| 17 Career and Technical Education | NA | NA | NA | NA | NA | NA |
| 18 Hallways/Lockers/Washrooms/Maint. space | R | R | R | R | Y | Y |

Overview of Elementary Facilities

Right-size, Renew, Re-invest

- Garfield Elementary
- Lowell Elementary
- Nisswa Elementary
- Riverside Elementary
- Harrison Elementary



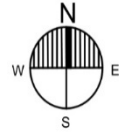
Addition/Remodel:
- Kitchen Expansion

**Garfield
Elementary
School**
(375 students)

Addition/Remodel:
- Controlled Entrance
- Expanded Admin.
Nurse
Conference Rm.
Work Room
Offices

Repurpose/Remodel:
- Break out

Addition/Remodel:
- Classrooms



Remodel:
- K-Room now Music

Addition/Remodel:
- Now 2 properly sized
K-rooms

Addition:
- Expand Staff Work Rm.

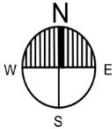
Addition:
- Special Ed.

Repurpose:
- Art/Sci./Tech.

Major Additions/Renovations

Garfield Elementary School

(375 Students)



Remodel:
- 1st Grade Studio

Remodel:
- 2nd Grade Studio

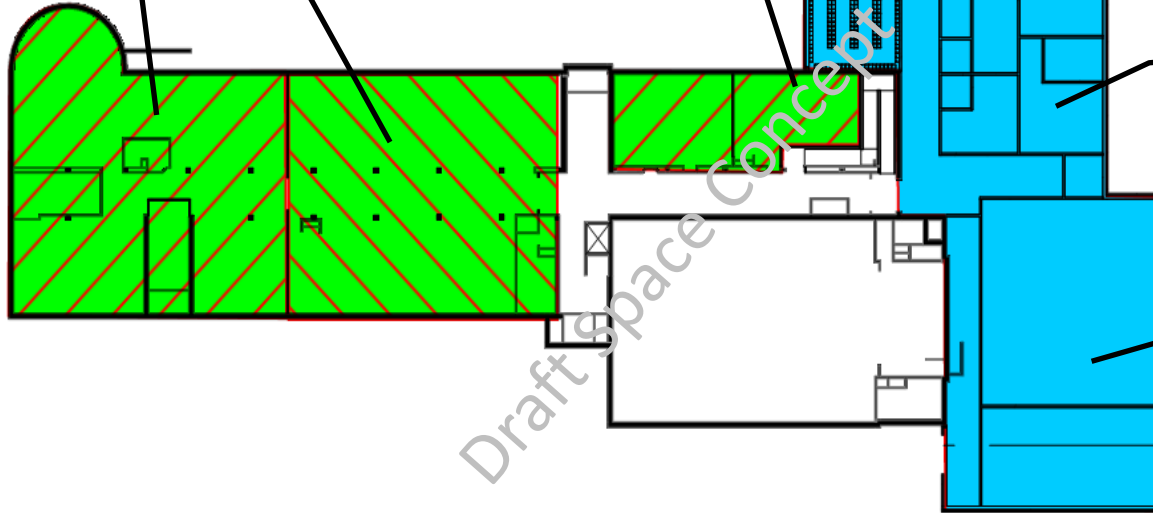
Addition:
- Kindergarten

Remodel:
- Special Ed.

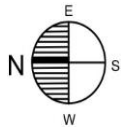
Addition:
- Controlled Entrance
- Admin.
- Nurse
- Conf. Rm.
- Work Rm.

Addition:
- Kitchen
- Multi-Purpose
- Café/Gym

Lowell Elementary School



MAIN LEVEL



**Lowell
Elementary
School**

Remodel:

- Music
- Robotics & Engineering

Remodel:

- Science
- Culinary Arts

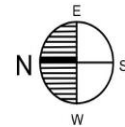
Remodel:

- Spanish
- Toilets

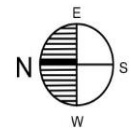
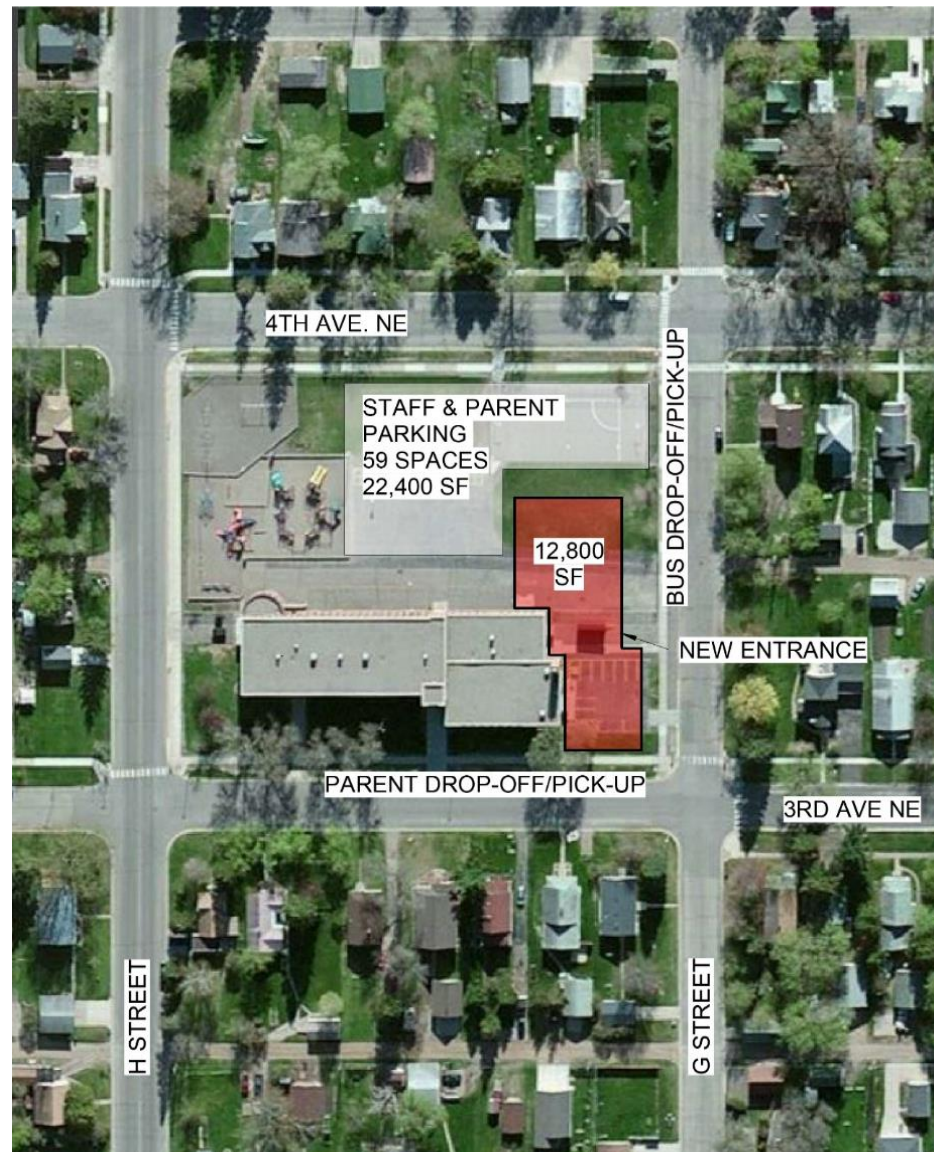
Remodel:

- Staff Lounge
- Special Ed.

LOWER LEVEL



Lowell
Elementary
School
(350 Students)



Remodel:

- Expand Music Rm.

**Nisswa
Elementary
School**

(375 Students)
(+ Early Childhood)

Addition:

- Controlled Entrance
- Expanded Admin.
Nurse
Conference Rm.
Work Room
Offices

Remodel:

- Art/Sci./Tech.
- Early Childhood
- Staff Work Room
- Book Room
- Circulation

Repurpose:

- Class to Break Out

Remodel:

- Offices

Addition:

- Phy. Ed. Space
- Storage

Addition:

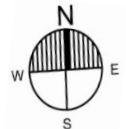
- Kindergarten Classes
- Special Ed.

Remodel:

- Classrooms
- Special Ed.

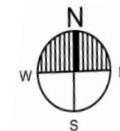
Addition:

- Classrooms
- Special Ed.



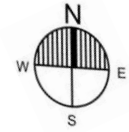
Nisswa Elementary School

(375 Students)



Riverside Elementary School

(500 Students)



Remodel:

- Kitchen Expansion
- Café Expansion

Remodel:

- Art/Sci./Tech.

Remodel:

- Breakout Space

Remodel:

- Art/Sci./Tech.

Remodel:

- Shower Room

Remodel:

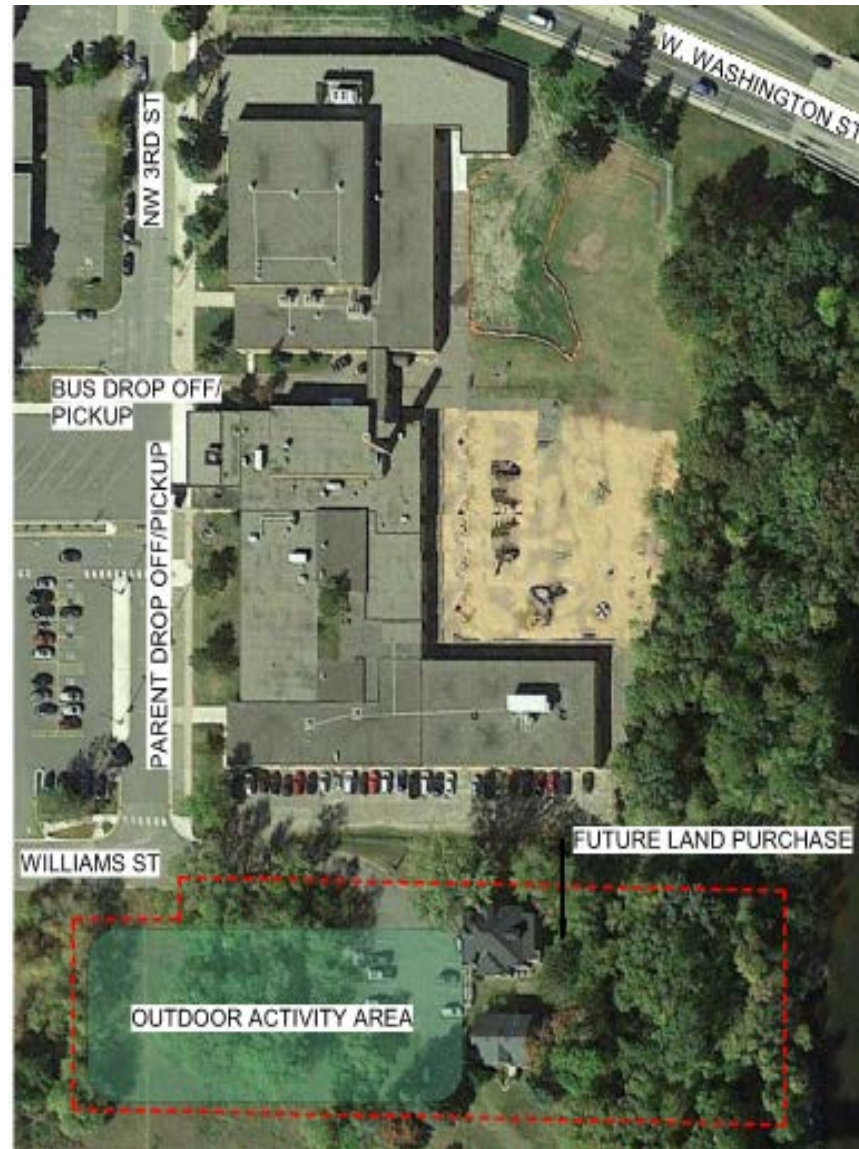
- Enlarged Kindergarten Rms.

Remodel:

- Breakout Space

Draft Space Concept

Riverside Elementary School (500 Students)



Addition:

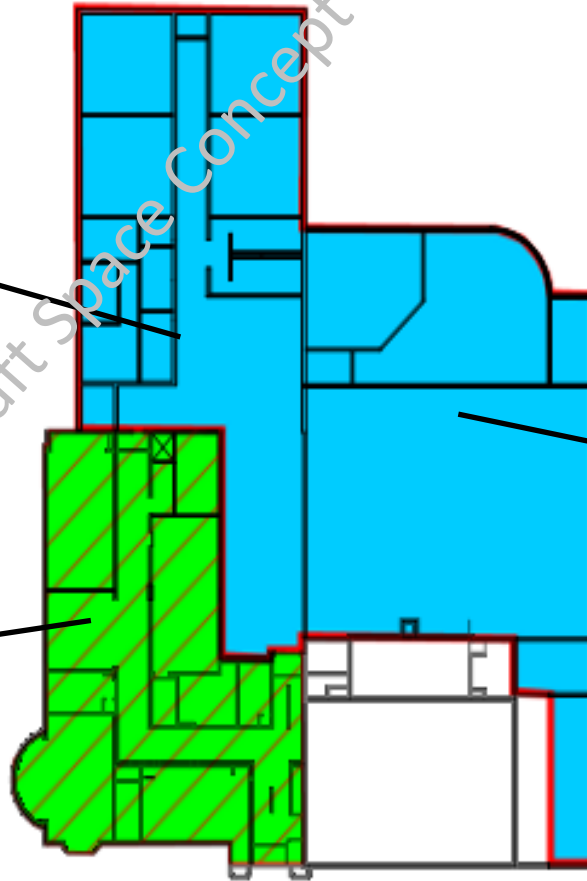
- Classrooms
- Main Office
- Nurse
- Support Spaces
- Toilets

**Harrison
Elementary
School Addition
(500 Students)**

Remodel:

- Kindergarten Rms.
- Collaboration Space

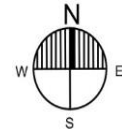
Draft Space Concept



MAIN LEVEL

Addition:

- Music
- Media
- Gym



Harrison Elementary School Addition (500 Students)

Lower Remodel:

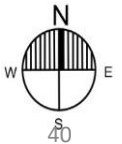
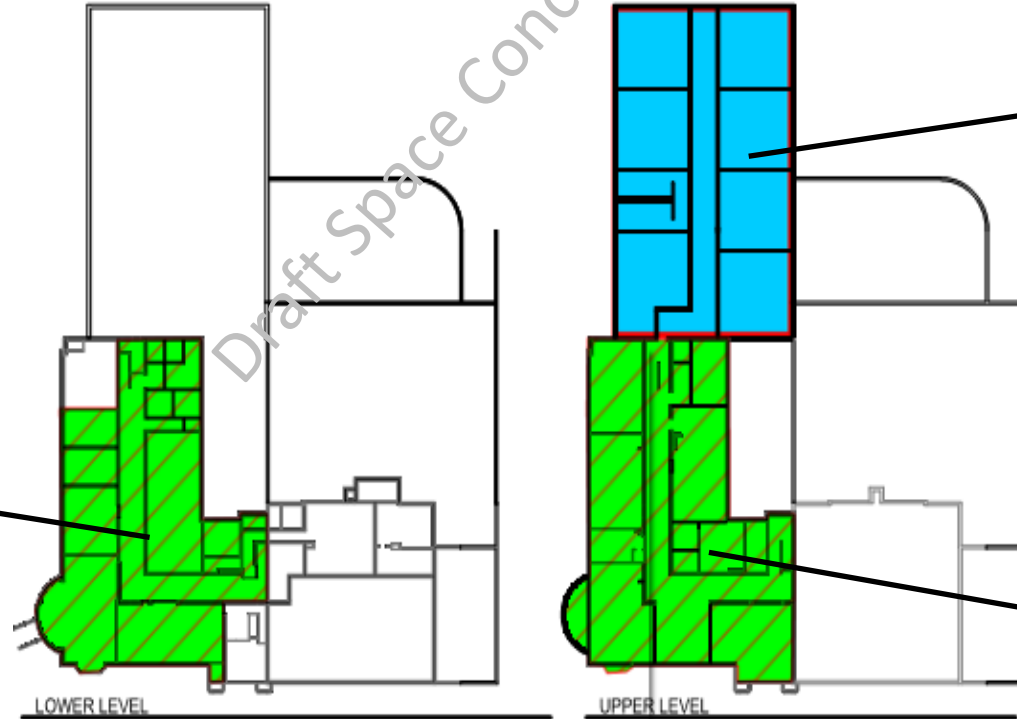
- Special Ed.
- Staff Work Rm.
- Art/Sci./Tech.

2nd Floor Addition:

- Classroom
- Toilets

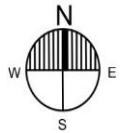
2nd Floor Remodel:

- Classrooms
- Collaboration Space



Harrison (Existing)

Harrison
Elementary
School Addition
(500 Students)



Overview of Elementary Facilities

Replace

- Harrison Elementary
- Baxter Elementary



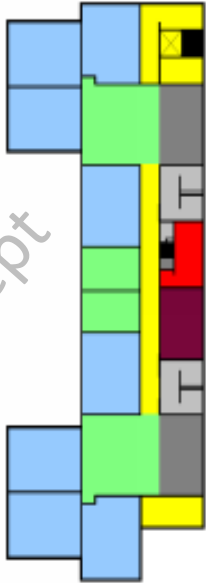
Site Selection Process

- Purpose
- Committee
- Tool- Site Considerations
- Findings

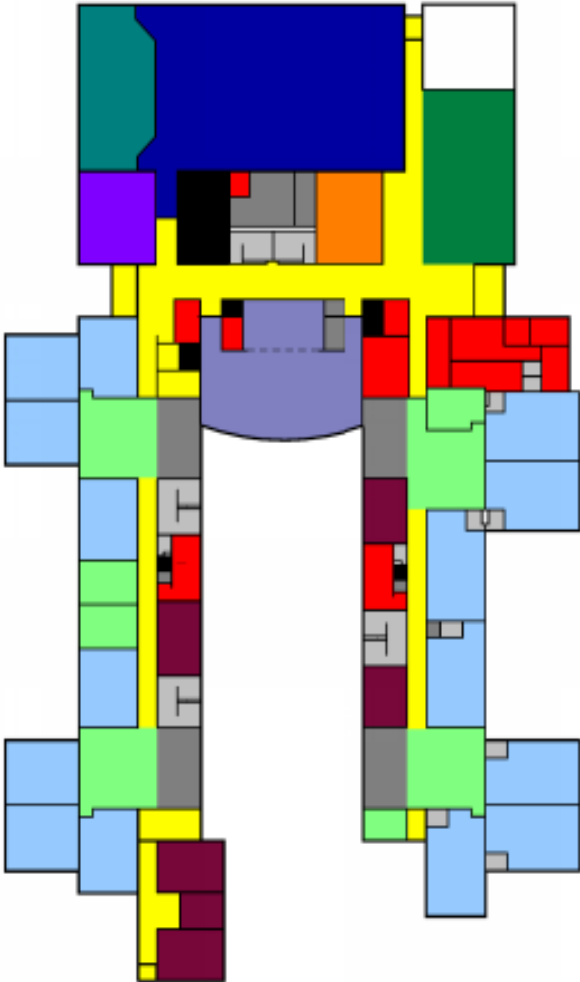


Harrison Elementary School (New)

Draft Concept



UPPER

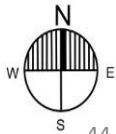


MAIN LEVEL

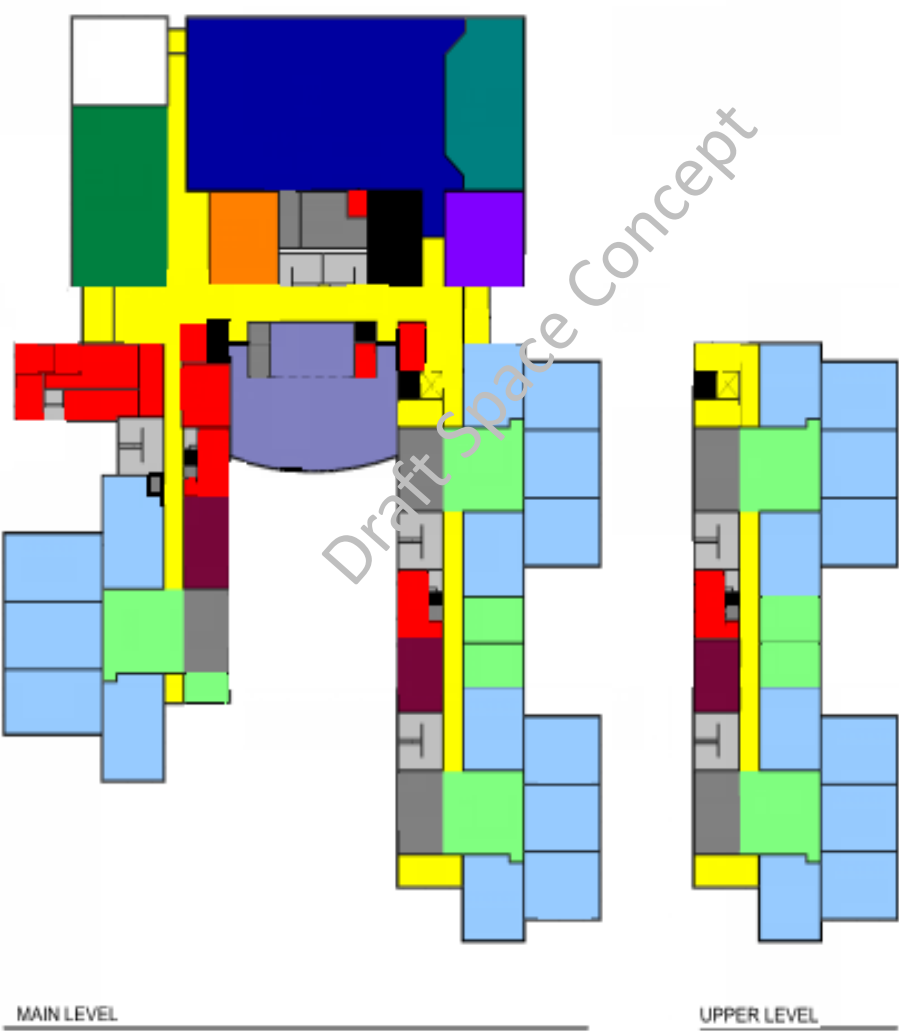
92,900 Square Feet
500 Student + Early
Childhood

OCCUPANCY LEGEND

- | | |
|-------------------|-------------------|
| ADMINISTRATION | MEDIA CENTER |
| CAFETERIA | MUSIC |
| CIRCULATION | RESTROOM |
| COLLABORATION | SPECIAL EDUCATION |
| GENERAL CLASSROOM | STAGE |
| GYMNASIUM | STEAM |
| KITCHEN | STORAGE |
| MECHANICAL | |

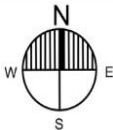


Baxter Elementary School (New)



85,780 Square
Feet
625 Students

- OCCUPANCY LEGEND
- ADMINISTRATION
 - CAFETERIA
 - CIRCULATION
 - COLLABORATION
 - GENERAL CLASSROOM
 - GYMNASIUM
 - KITCHEN
 - MECHANICAL
 - MEDIA CENTER
 - MUSIC
 - RESTROOM
 - SPECIAL EDUCATION
 - STAGE
 - STEAM
 - STORAGE



Secondary Facility Solutions and Spaces

- Safety and Security
- Career and Technical Education
- Special Education
- Workforce Development
- Performing Arts
- STEM
- Technology
- Health and Wellness
- Accessibility
- Core Space

| CATEGORY | | COLOR |
|----------|--|-------|
| 1 | Classroom Size and Suitability | R |
| 2 | Cafeteria/Kitchen/Serving | Y |
| 3 | Security and Supervision | R |
| 4 | Main Office/Nurse/Support Services | Y |
| 5 | Science Classrooms/Labs | R |
| 6 | Art Classrooms/Labs | Y |
| 7 | Music Classrooms/Practice Areas/Etc. | Y |
| 8 | Staff Lounge/Collaborative Planning Areas | G |
| 9 | Student Commons/Break-Out Areas | R |
| 10 | Physical Ed./Athletics/Gym/Locker Rooms/Pool Etc. | Y |
| 11 | Site Suitability: Fields/Green Space/ Storage Etc. | G |
| 12 | Parking/Bus Drop-Off: Staff/Students/Parents | R |
| 13 | Technology | Y |
| 14 | Library/Media Center: Location/Size/Layout | Y |
| 15 | Special Education/Support Services | Y |
| 16 | Auditoriums/Performing Arts Spaces | R |
| 17 | Career and Technical Education | Y |
| 18 | Hallways/Lockers/Washrooms/Maintenance space | R |

Forestview Middle School

- Controlled Entrance
- Parent Drop-off / Pick-up



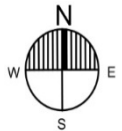
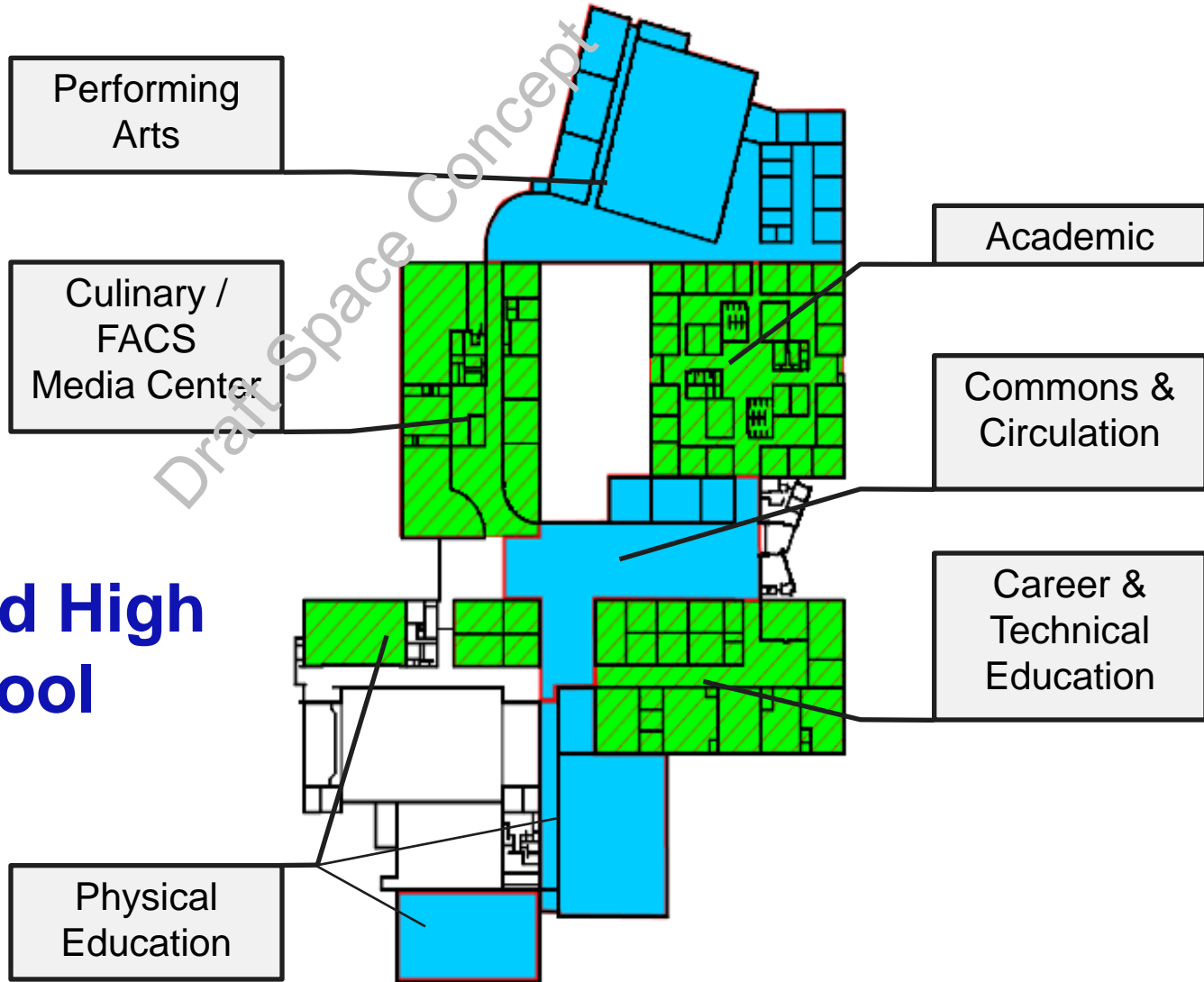
Secondary Facilities



Brainerd High School Project Highlights

- Improved security and supervision
- Renovate existing facility throughout to modernize
- Combine North and South Campus spaces for a grades 9 – 12 building with improved programming opportunities and gain operational efficiencies
- Additional space for classrooms, health and wellness, performing arts and dedicated collaborative spaces.
- Improve and enhance career and technical education, technology integration, workforce development & community partnerships
- Provide dedicated collaborative spaces for students and staff
- Create a welcoming commons space for our students and community
- Relocate Lincoln Education Center in a right-sized south campus for potential program expansion & improved access to high school career-tech programs
- Increase accessible and safe parking

Brainerd High School



BAXTER ELEMENTARY

EARLY CHILDHOOD (HUB)

BRAINERD LEARNING CENTER

MIDDLE SCHOOL ALTERNATIVE PROGRAM
ALTERNATIVE EDUCATION CENTER
+ GROWTH



Elementary Schools

Budget Estimate

- Nisswa \$12M-\$13M
- Garfield \$ 9M-\$9.5M
- Lowell \$12M-13M
- Riverside \$10M-\$11M
- Harrison – Existing \$20M-\$21M
- Harrison – New \$25M-\$27M
- Baxter New \$24M-\$26M

- Total (Existing Harrison) \$87M-\$93.5M
- Total (New Harrison) \$92M-\$99.5M

Secondary Schools

Budget Estimate

- BHS - South Campus \$ 10M-\$11M
- BHS - North Campus \$ 78M-\$83M
- Lincoln Ed Center (Demo) \$0.5M-\$0.5M
- Brainerd Learning Center \$ 1.5M-\$2M
- Forestview Middle School \$ 1.5M-\$2M
- Baxter EC Center \$ 9M-\$10M
- WESB \$1.5M-\$20M

- Total \$102M-\$128M

Total (Existing Harrison) \$189M-\$221.5M

Total (New Harrison) \$194M-\$227.5M

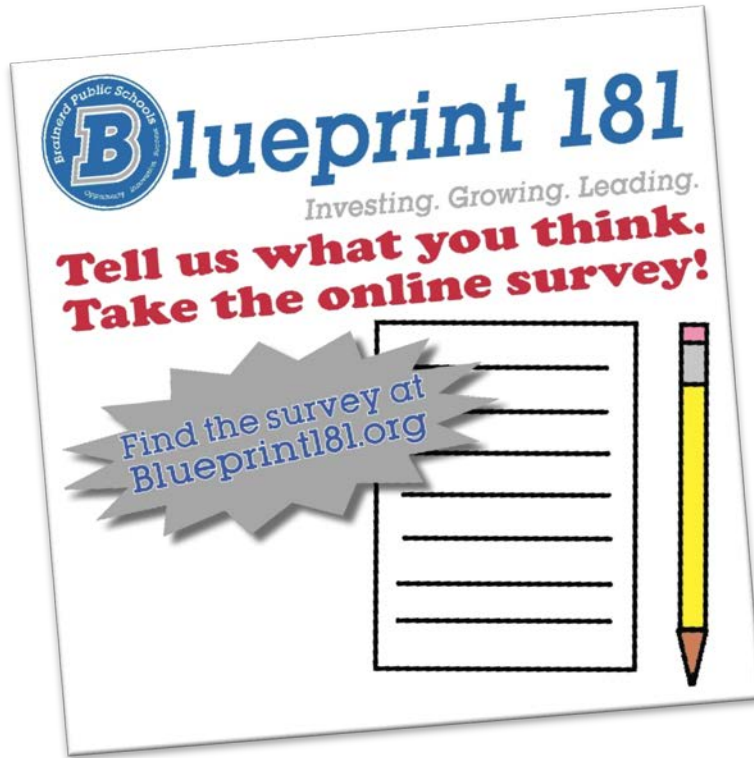


Brainerd Public Schools

Opportunity. Innovation. Success.

Phase I: Comprehensive Communications Planning

Phase I: Comprehensive Communications Planning



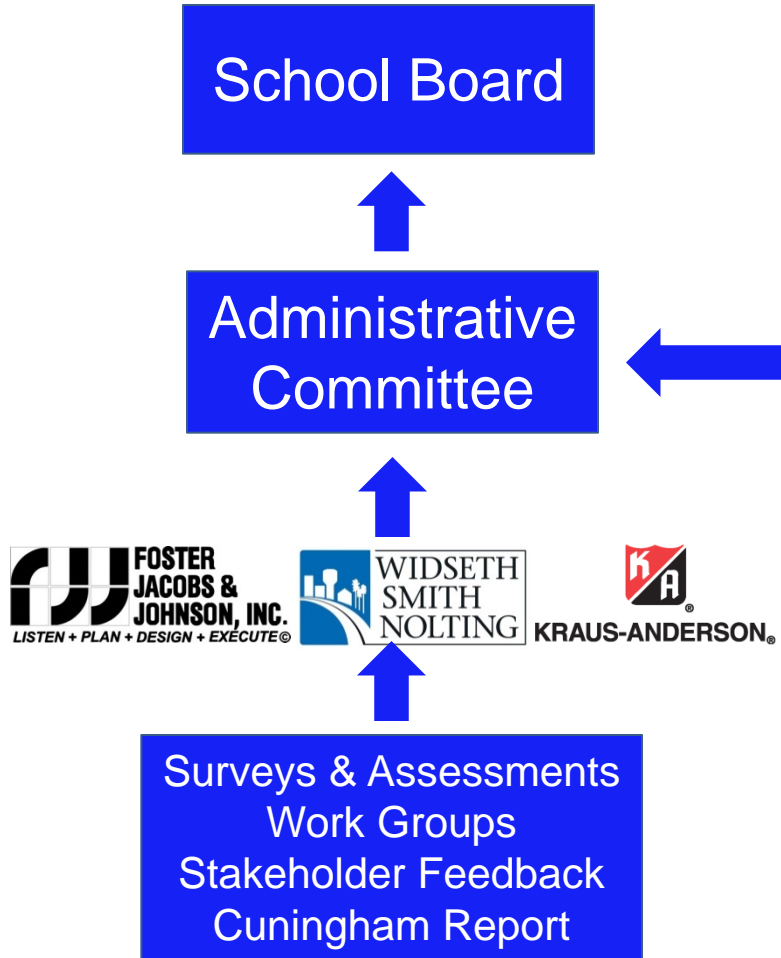
Recent & Ongoing Efforts

- Survey
- Listening Sessions
- Blueprint181.org
- District Communications

Preparation

- Traditional Media
- Social Media
- Print Materials

Phase IV – Develop Options and Alternatives



- Overall Comprehensive Facility Goal
- Eight Facility Objectives
 - Safe and secure facilities
 - Mechanical and educational adequacy updates
 - Space that fosters best practice instruction and 21st Century learning opportunities
 - Spaces that promote robust opportunities in academics, arts, activities, & athletics
 - Increased community collaboration, career & technical education opportunities, and workforce development initiatives
 - Visionary technology integration
 - Transparency, engagement, and community trust-building
 - Highest quality educational opportunities for our taxpayers' generous investment
- Information from Phases I, II and III

Architectural Renderings of Facilities

Scope: Graphic depiction of work:

- Nisswa Elementary
- Garfield Elementary
- Lowell Elementary
- Riverside Elementary
- Existing Baxter Elementary (Repurposed to Early Childhood)

Cost: \$10,000

Scope: Floor plan and 3D renderings:

- New Elementary
- High School

Cost: \$7,500 per building



Brainerd Public Schools

Opportunity. Innovation. Success.

Future Board & Committee Meetings

November 13, 2017 — Regular School Board Meeting at 6:00pm

1. Site Selection Decisions – Baxter & Harrison Elementary Schools
2. Priorities and tax impact planning update

November 27, 2017 — Special School Board Meeting/ Retreat at 5:00pm

1. Determine the Bond Referendum Election Date
2. Review Recommendation for the Comprehensive Facilities Plan

December 11, 2017 — Regular School Board Meeting at 6:00pm

1. Approve Recommendation for the Comprehensive Facilities Plan
2. Approve the Ballot Question(s)

January 8, 2018 — Regular School Board Meeting at 6:00pm

1. Approve Review & Comment for Submission to MDE

January 10, 2018 – Submit Review & Comment to MDE



Brainerd Public Schools

Opportunity. Innovation. Success.

School Board Retreat

Monday, October 30, 2017

5:00 PM



2017 Brainerd School District Survey

Todd Rapp

October 30, 2017



A Note About Surveys

- 1) Snapshot in time
- 2) Look for comparisons, not absolutes:
 - *The “why” behind the “what”*
 - *Potential gaps in understanding*
- 3) Surveys will only answer what we ask



Methodology: Phone Survey

- Sample of 400 randomly selected residents living in the Brainerd School District
- Conducted September 26 – October 6, 2017
- 24 minute telephone interviews
- Margin of error is $\pm 5.0\%$



Key Demographics



| | |
|-------|-----|
| 18-34 | 19% |
| 35-54 | 42% |
| 55+ | 40% |



34% have kids attending Brainerd Public Schools



37% college graduates



25% retired



45% live in Brainerd or Baxter



52% female

Comparing the Two Surveys



Scientific, Phone



On-line

| | Scientific, Phone | | On-line |
|---------------------------|-------------------------------|--|----------------------|
| Sampling | Random, representative | | Self-selected |
| Size | 400 | | 1,312 |
| Margin of Error | 4.0% | | N/A |
| Questions | 83 | | 37 |
| Length | 24 minutes | | 8 minutes |
| Timing | Sept. 26-Oct. 6 | | Oct. 6-18 |
| District Employees | 0% | | 25% |
| Repeat Respondents | None | | Not certain |

Differences in Samples

| LOCATION | SCIENTIFIC | ONLINE |
|------------|------------|--------|
| Brainerd | 26% | 51% |
| Baxter | 20% | 27% |
| Nisswa | 5% | 10% |
| Merrifield | 4% | 3% |
| Other | 45% | 10% |

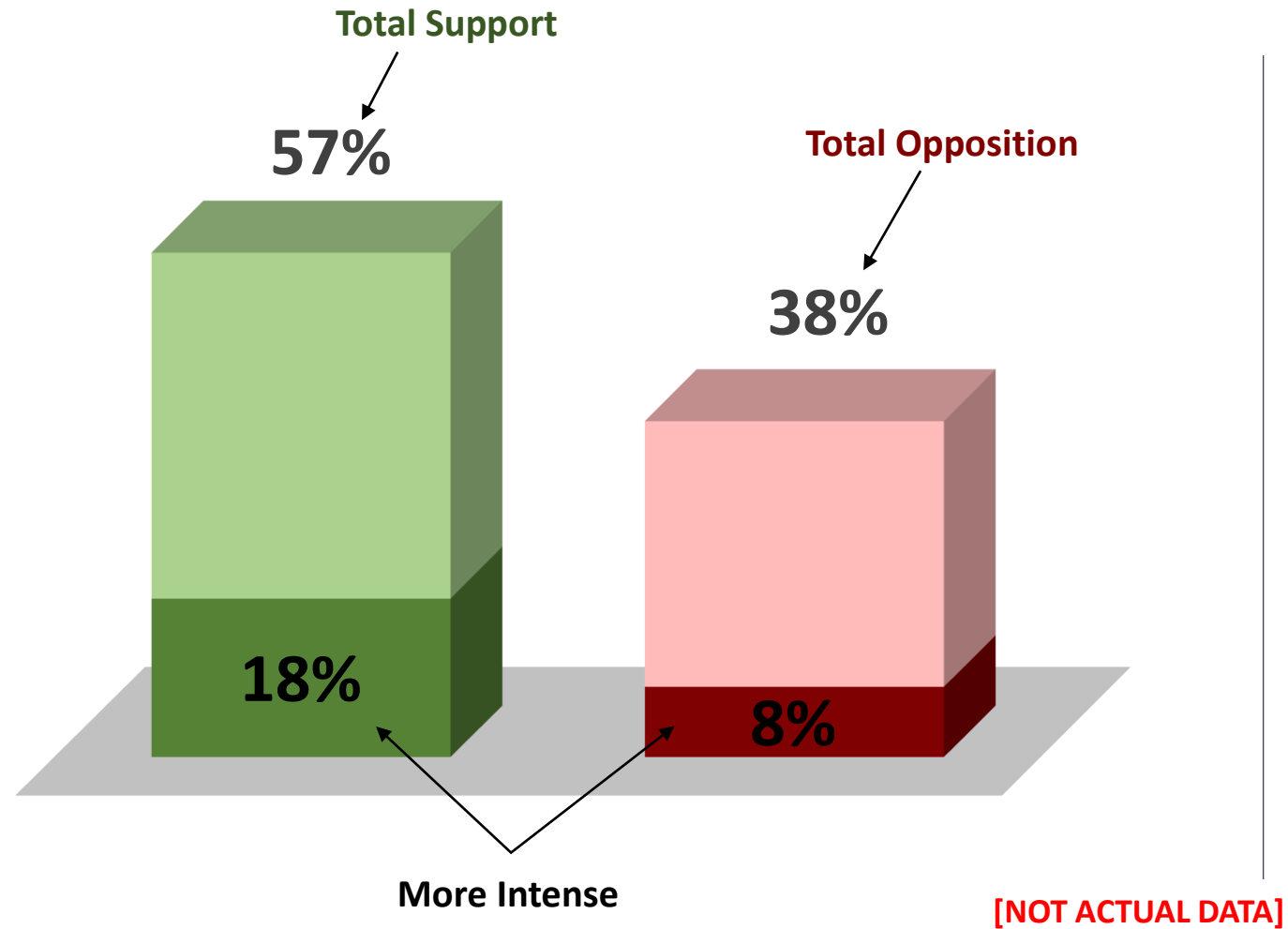
PAST BPS ATTENDANCE:

| PERSON OR SPOUSE | SCIENTIFIC | ONLINE |
|------------------|------------|--------|
| Yes | 44% | 66% |

| RELATIONSHIP TO DISTRICT | SCIENTIFIC | ONLINE |
|--------------------------|------------|--------|
| Employees | 0% | 25% |
| Parents | 34% | 60% |
| Public | 68% | 14% |

| AGE | SCIENTIFIC | ONLINE |
|-------|------------|--------|
| 18-34 | 19% | 22% |
| 35-54 | 42% | 65% |
| 55+ | 40% | 13% |

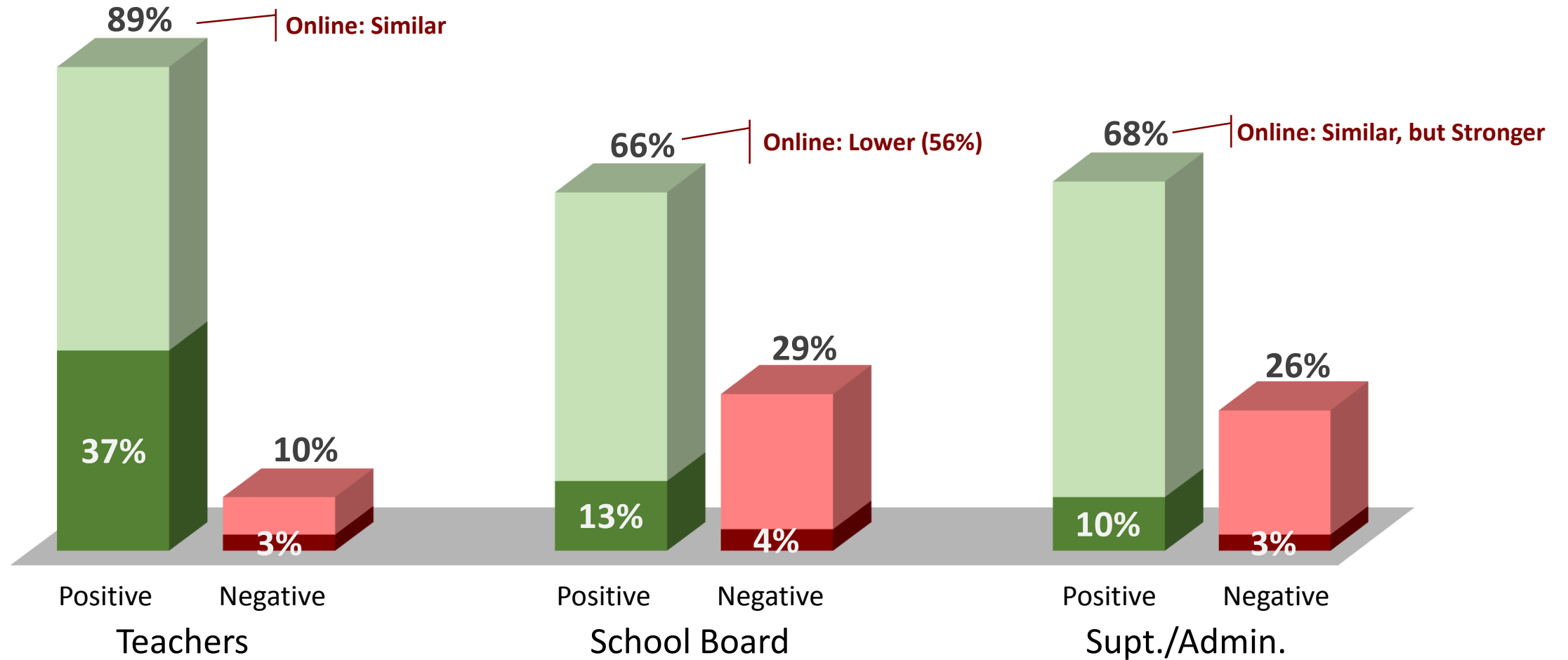
A Guide to This Presentation



Lower: Less Support
Higher: More Support
Weaker: Less Intensity
Stronger: More Intensity

+24 intensity means strong support exceeds strong opposition by 24 points

Job Performance



Achieving Benchmarks

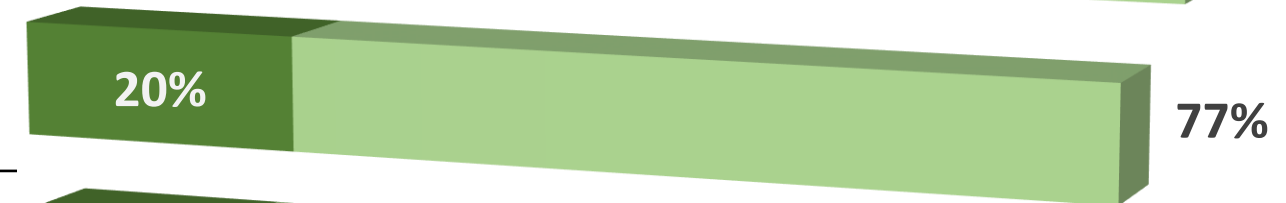
Our community receives a **good value** from its investment in its public schools.



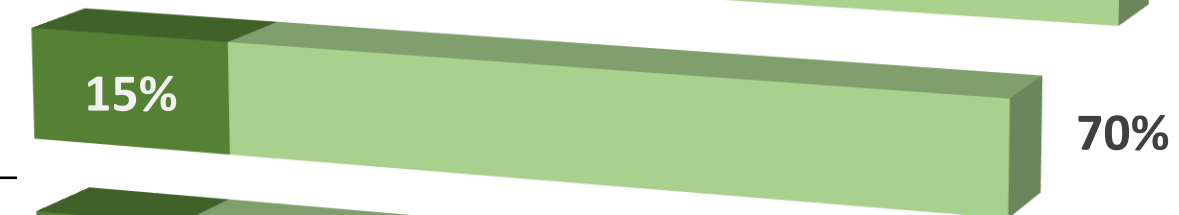
The Brainerd School Board does a good job of **informing residents** about the decisions it makes.



The School Board makes decisions in the **best interests of our students** and their families.



The School Board and Administration **manage our tax dollars** effectively and efficiently.

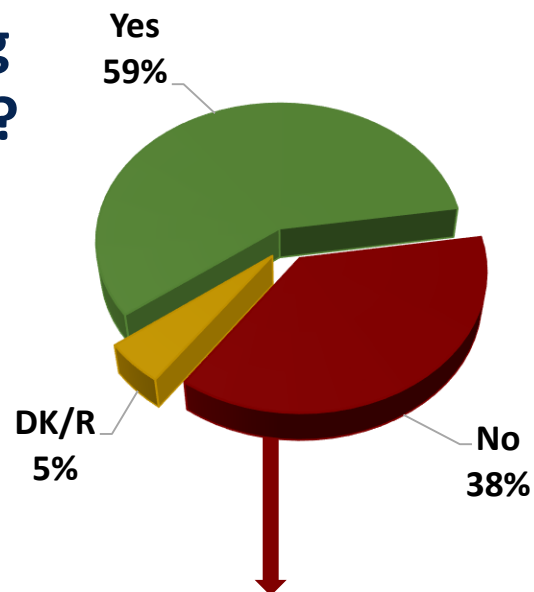


The School Board and Administration have used available funds well to **maintain and update** our buildings.

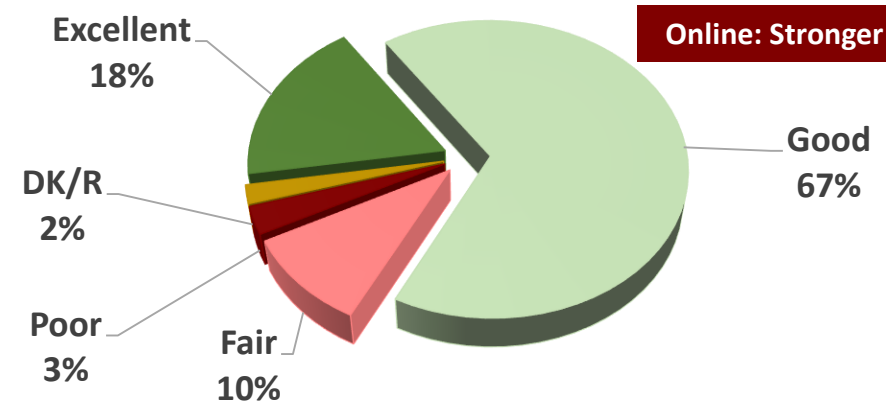


Achieving Benchmarks

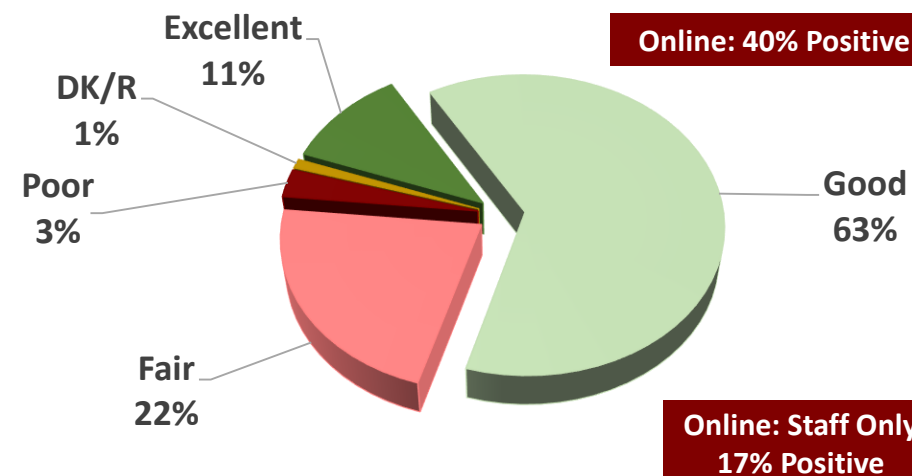
Is Funding Adequate?



Quality of Education



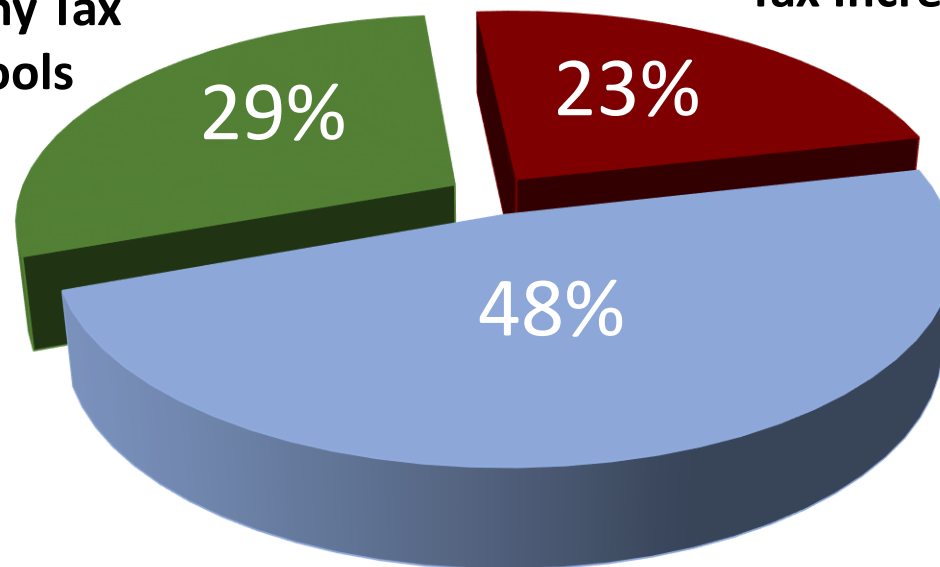
Quality of Buildings



Tax Tolerance

Vote For Almost Any Tax Increase for Schools

Vote Against Almost Any Tax Increase for Schools



Depends on the Conditions



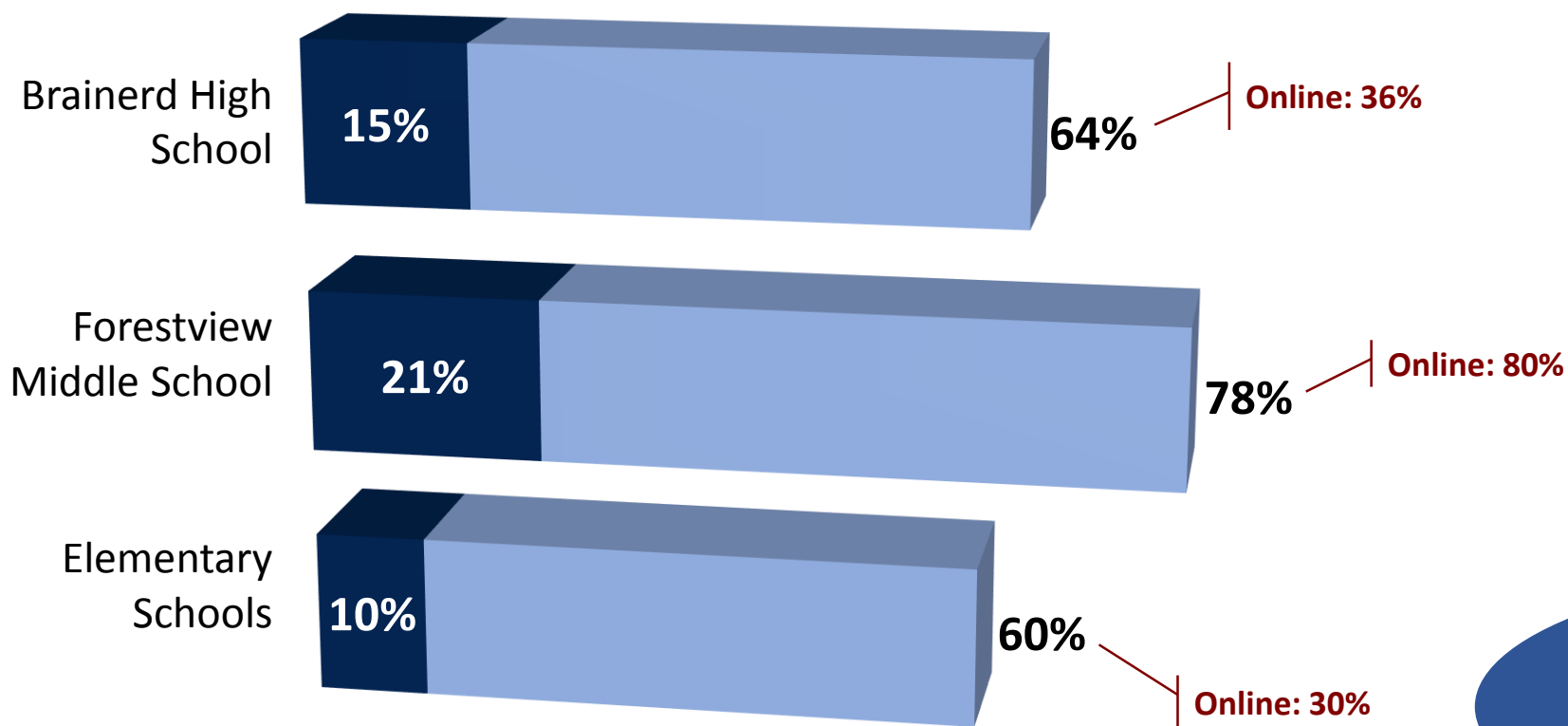
Acceptable Cost of Plan

Pre-Test: \$6.58/month

Post-Test: \$7.34/month

Only 28% Consider School Taxes High Compared to Other Districts

Are Buildings Meeting Our Needs?



Useful Life of a School

| | |
|-----------|-----|
| 25 Years | 15% |
| 50 Years | 33% |
| 75 Years | 34% |
| 100 Years | 11% |

Online: Only 21% Agree, Just 5% of Staff

59% Believe We Have
Enough Space to Properly
Educate Students

Open Ended: What Building(s) May Need Replacement?

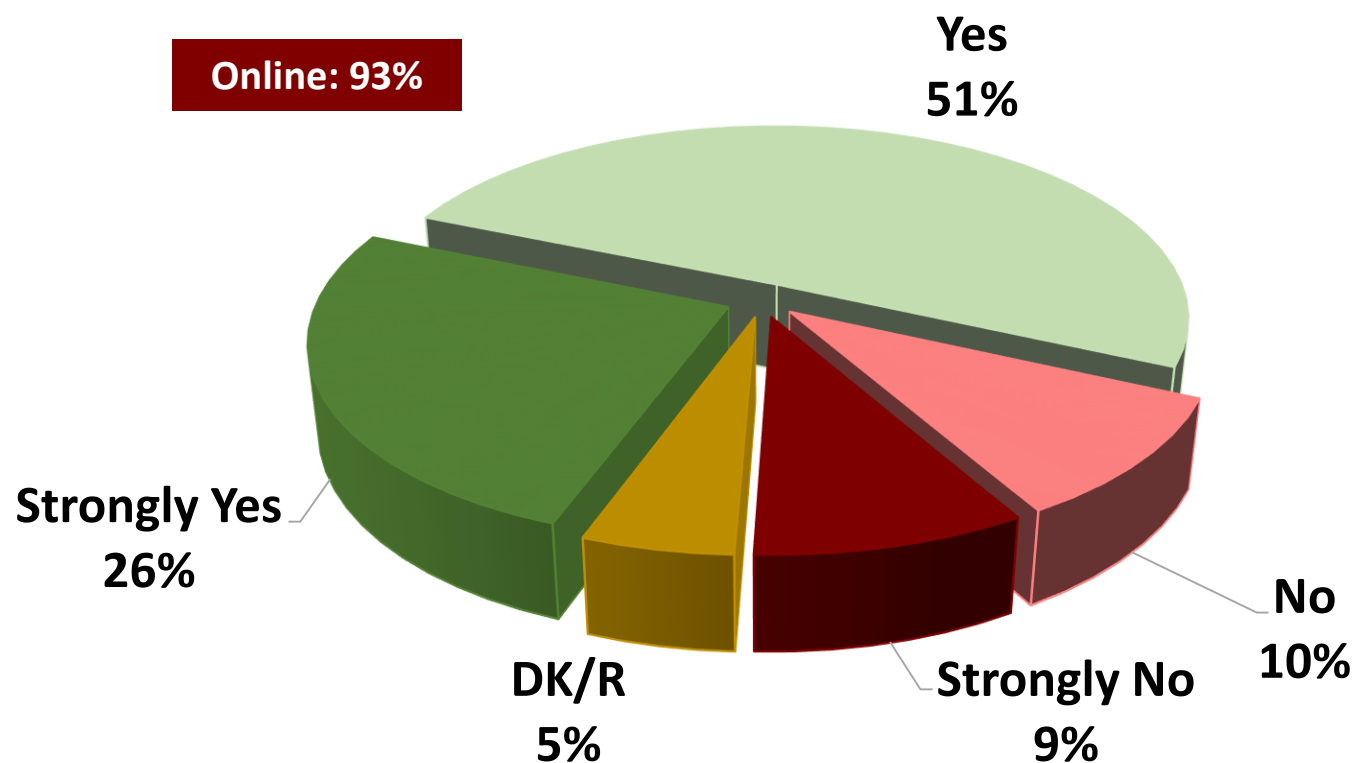


| | Scientific | Online |
|----------------------|------------|--------|
| Harrison | 4% | 43% |
| Baxter | 7% | 29% |
| Lincoln Elementary | 1% | 23% |
| Lowell Elementary | 2% | 23% |
| Brainerd High School | 14% | 21% |
| None/Don't Know | 60% | 33% |

**72%
Staff**

Need For A Long-Range Plan

Do you believe the School Board should develop a long-range plan to maintain and make the improvements needed in our school buildings?



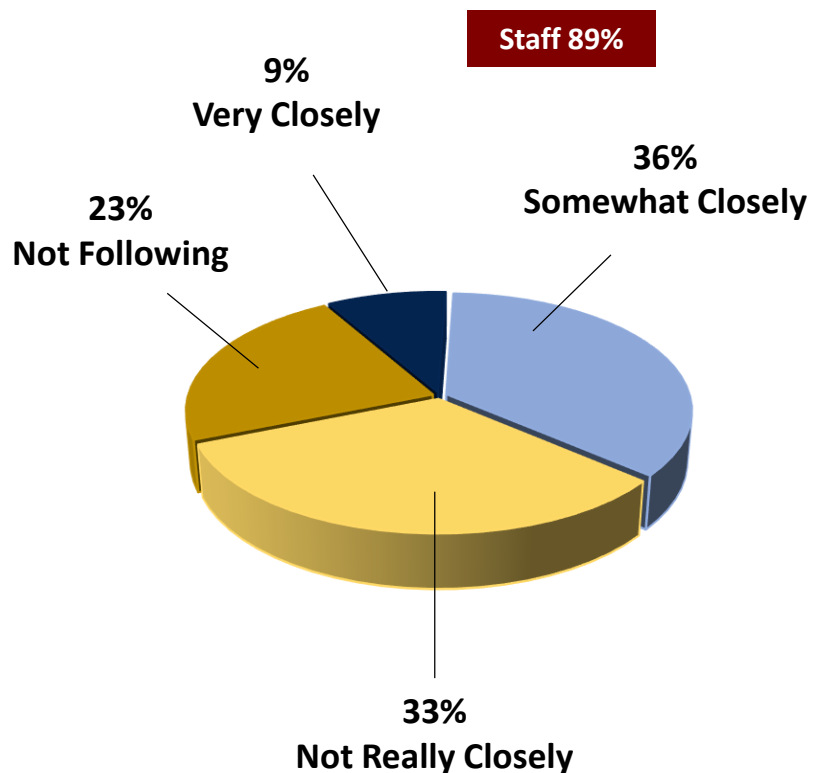
Expected Size of Plan

Pre-Test: \$38.6 million

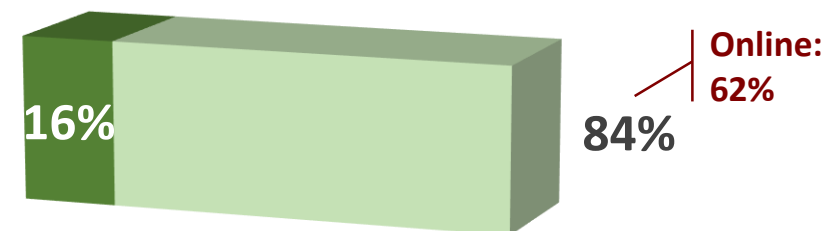
Post-Test: \$45.3 million

Is Our Long-Range Planning Process Working?

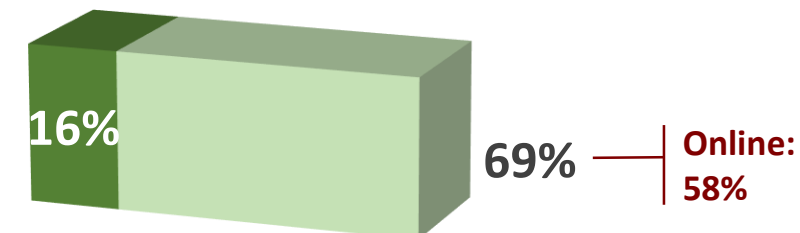
How Closely Are You Following the Discussion?



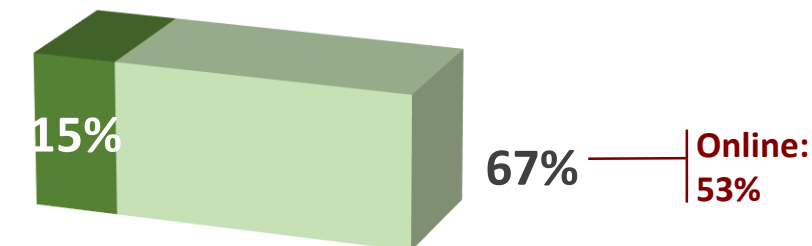
Do you believe the School Board is working hard to find a plan **benefiting students and staff** of the Brainerd Public School?



Do you think the School Board is doing a good job of **involving parents, local citizens and community leaders in the discussions** about current and future facilities needs?



Do you believe the School Board is working hard to find a plan that is **fair to local taxpayers?**



Support For Investments

RANKED HIGHEST

| | |
|---|------|
| Design classroom space for STEM, the science, technology, engineering and math programs in all schools? | 4.03 |
| Modernize the space used for special education classrooms and support services? | 3.86 |

RANKED LOWEST

| | |
|--|------|
| Provide common areas for students and teachers to use for small group work and planning? | 3.24 |
| Create more efficient cafeteria and kitchen areas to serve more students and staff? | 2.94 |

5-point scale



Differences in Priorities

| | Scientific | Online Employees | Online Parents | Online Public |
|---------------------------|------------|------------------|----------------|---------------|
| STEM | 4.03 | 2.56 | 2.55 | 2.47 |
| Special Education | 3.86 | 3.95 | 3.41 | 3.23 |
| Common Areas for Learning | 3.24 | 3.33 | 2.88 | 2.61 |
| Kitchen/Cafeteria | 2.94 | 3.38 | 3.10 | 2.99 |

Support For Investments

IN THE MIDDLE

| | |
|--|-------------|
| Increase opportunities to collaborate with local businesses to improve workforce development? | 3.66 |
| Update infrastructure to improve the use of technology for students learning in the schools? | 3.62 |
| Expand and update the spaces used by students and the community for fine arts? | 3.62 |
| Improve career and technical education classrooms in our middle school and high school? | 3.59 |
| Increase the size of elementary classrooms from 850 to 950 square feet, the modern school standard used by the Minnesota Department of Education. | 3.57 |
| Improve traffic flow around our schools by separating bus areas from drop-off and pick-up areas for parents? | 3.49 |
| Improve school security by restricting public access points, adding lockdown technology and improving site supervision? | 3.44 |

5-point scale



Differences in Priorities

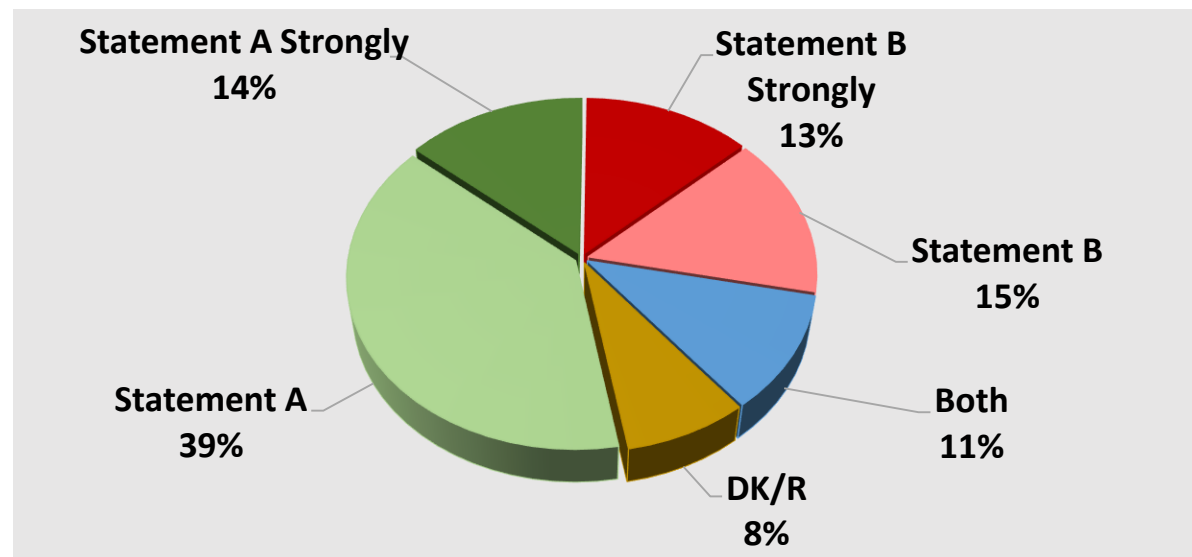
| | Scientific | Online Employees | Online Parents | Online Public |
|----------------------------|------------|------------------|----------------|---------------|
| Workforce Development | 3.66 | 2.30 | 2.21 | 2.23 |
| Technology | 3.62 | 4.03 | 3.87 | 3.75 |
| Fine Arts | 3.62 | 3.62 | 3.16 | 3.29 |
| Career/Tech Education | 3.59 | 3.98 | 3.94 | 3.74 |
| Elementary Classroom Space | 3.57 | 4.30 | 3.58 | 3.39 |
| Traffic Flow | 3.49 | 3.86 | 3.65 | 3.13 |
| School Security | 3.44 | 4.24 | 3.95 | 3.76 |

Residents Understand the Core Reasons for Implementing a Facility Plan

| | |
|--|---------------|
| It is harder to teach in classrooms not designed properly for the age of the students and the subjects being taught. | 75% Agree |
| | +24 Intensity |

| | |
|---|---------------|
| We should design schools for the number of students we expect to enroll over the next ten to fifteen years, not the number of students we have today. | 73% Agree |
| | +22 Intensity |

- A. We should improve our schools now, because interest rates and construction costs are still low; OR
- B. We should wait at least a few years to make this investment, because the economy in this region still isn't strong enough.

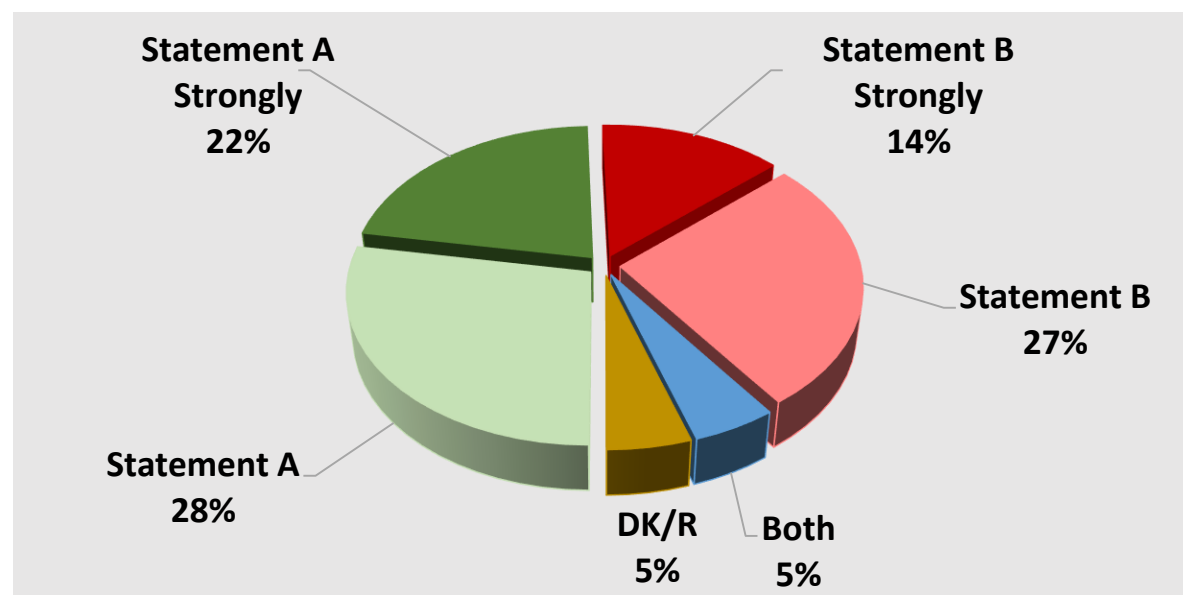


Residents Want Equity Between Neighborhood Schools

| | |
|---|---------------|
| Every elementary school should provide the same opportunities for students, regardless of where a family lives in the district. | 81% Agree |
| | +26 Intensity |

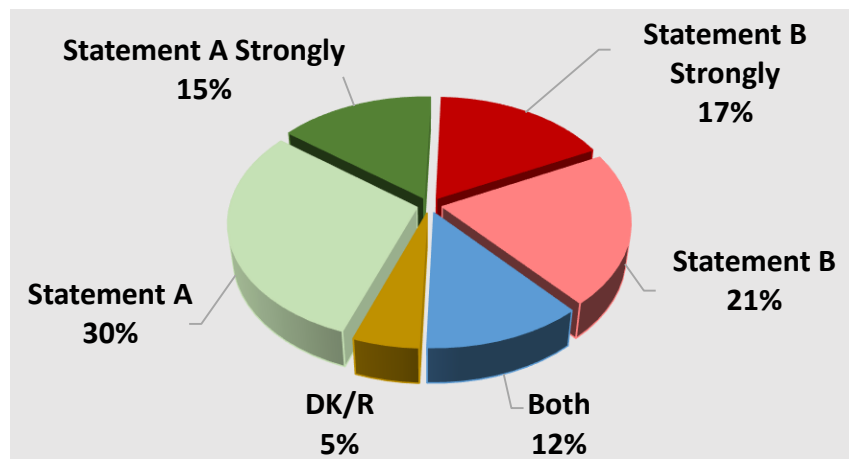
| | |
|---|--------------|
| Elementary schools should continue to be located in the neighborhoods where our families are living, even if it means we need to invest a little more money to manage traffic issues and provide outdoor space. | 72% Agree |
| | +7 Intensity |

- A. School districts should not have the ability to use eminent domain to buy additional homes or business property around school sites; OR
- B. As long as school districts pay property owners a fair price and help with relocation, they should be able to add land to improve school sites.

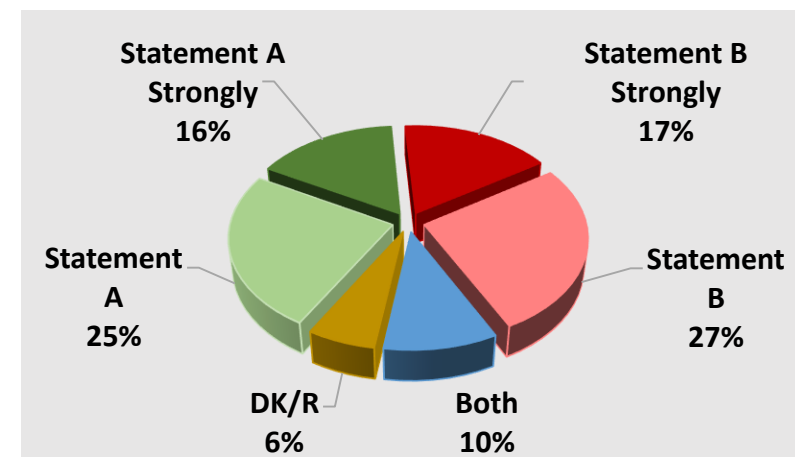


No Consensus Among Residents About Remodel vs. Build New Options

- A. We should invest in more small neighborhood elementary schools, which are better for families and students; OR
- B. We should invest in fewer and larger elementary schools, so we can save overhead and administrative costs.



- A. If we are going to increase property taxes, I would use the money for modern schools rather than pouring more money into older buildings; OR
- B. We have invested a lot of money in our current schools – if possible, we should continue to update and improve these buildings, rather than tearing them down and starting over.



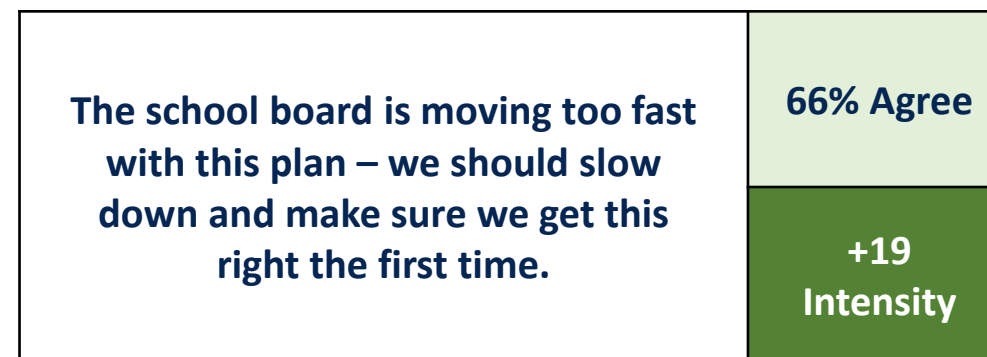
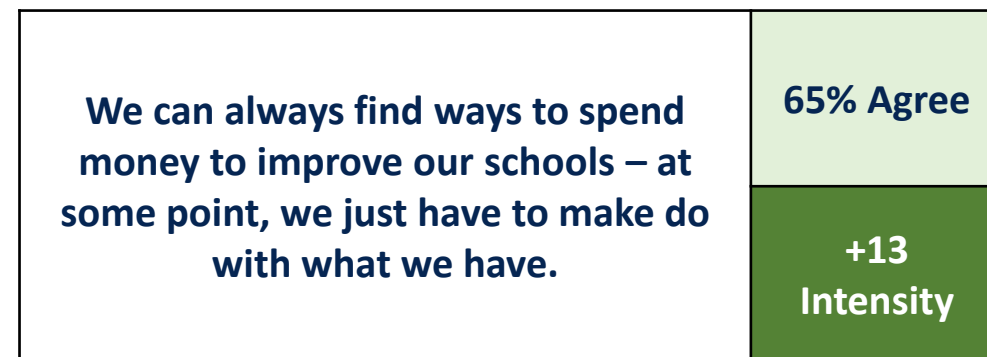
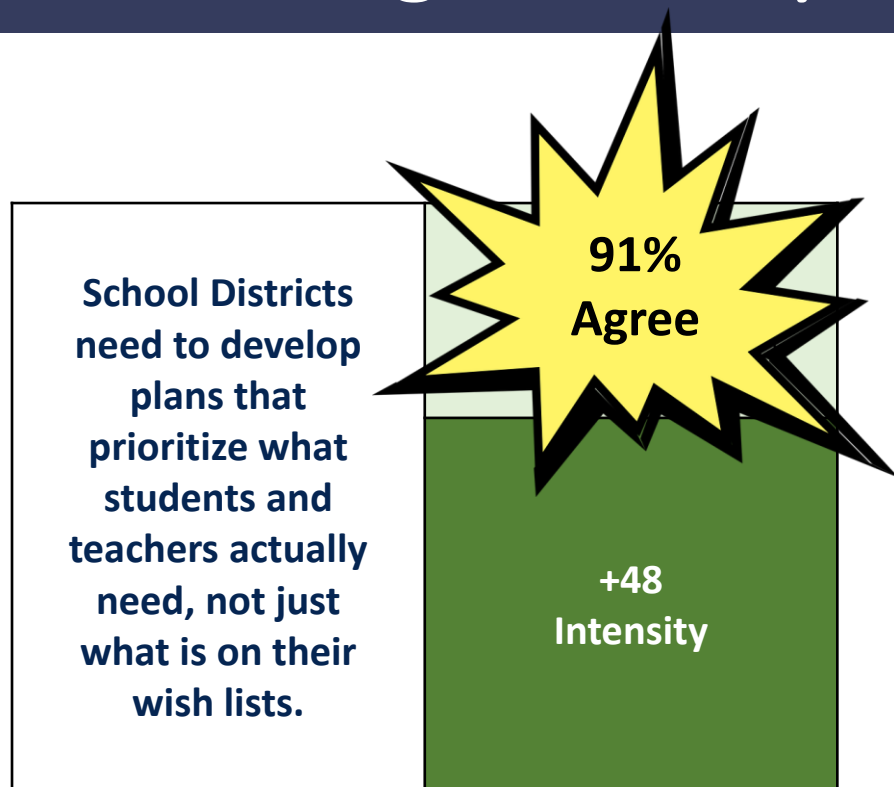
**HOWEVER,
OPEN TO
MODERNIZATION**

We may need to replace one or two of our elementary schools, if the cost of remodeling and maintaining them is too high.

68% Agree

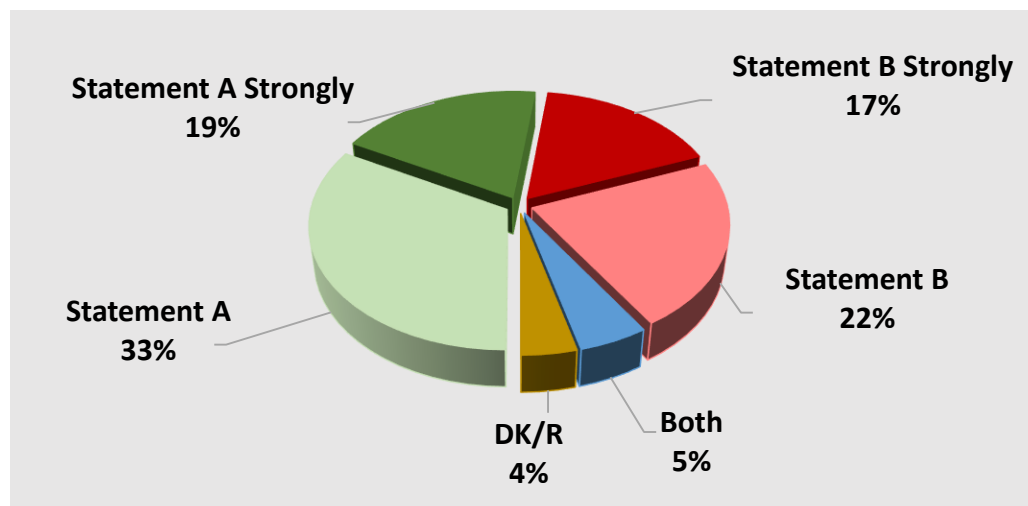
+14 Intensity

Residents Want to Know School Board is Planning Carefully

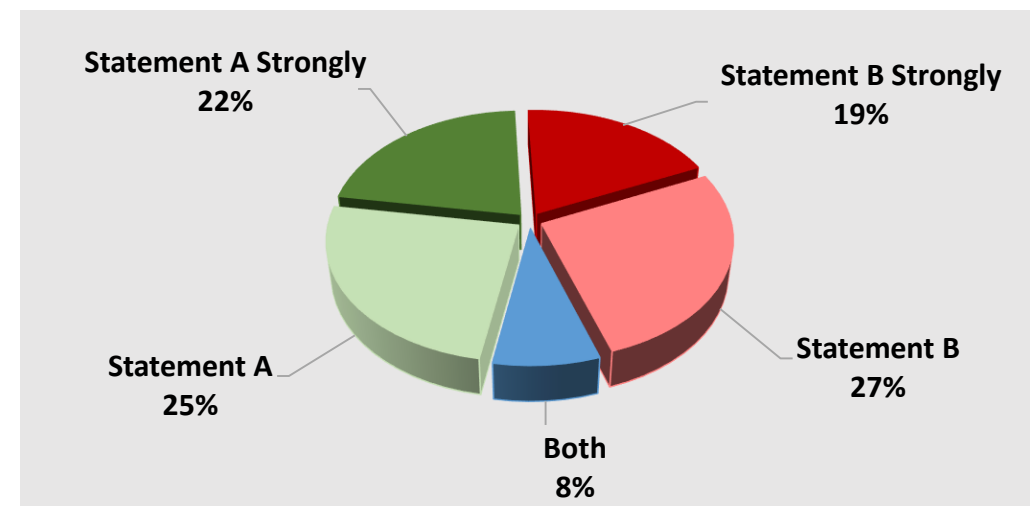


Residents Are Financially Careful

- A. School districts should use “pay-as-you-go” plans for building improvements, investing a little every year on each building to improve education and safety; while holding down the annual burden on taxpayers; OR
- B. School districts should adopt long-range plans to invest in schools, so funds can be use more efficiently by making all of the needed improvements in a school at one time.



- A. Local property taxes are going up too quickly; we can't afford to put more school taxes on the backs of homeowners and businesses; OR
- B. While the State of Minnesota provides some money for maintaining buildings, local taxpayers need to step up when major investments in schools are needed.



Sources of Information



| | Primary Source | Preferred Source |
|--|----------------|------------------|
| District Newsletter <i>Electronic</i> | 38% 6% | 47% 10% |
| District Websites <i>Specific Schools</i> | 29% 9% | 29% 6% |
| Word of Mouth | 14% | 3% |
| Local Media | 14% | 12% |

Staff and Parents Chose Email as First Option

Conclusions

- 1) High marks for district performance
- 2) Satisfaction with current buildings
 - *Better awareness of deficiencies among parents and staff than the general public*
 - *Residents want to know that the neighborhood school structure will continue*
 - *Equity is a high priority*
- 3) Still, residents agree with need for long-range planning
 - *Ready to move forward, but looking for evidence of the right plan*



Conclusions

4) Cost of plan will be a bigger concern than the tax bite

- *Residents believe the school board is trying to balance student/staff needs with taxpayer concerns*
- *Residents will want to understand how projects get prioritized*

5) Several critical information gaps

- *How bonding for a comprehensive facilities plan reduces burden on taxpayers*
- *Why local taxpayers must fund building improvements*
- *Growing and changing space needs*



Conclusions

6) Key differences between scientific (public) and online (staff and parents)

- *Perceptions of overall quality of facilities*
- *Identification of buildings that need replacement*
- *Most important investments within these schools*

7) Interest and scrutiny will increase as we move closer to Special Election Day



Conclusions

- 8) Overall — this is a marathon, not a sprint
- *Already succeeding in creating a positive discussion about education needs*
 - *Need to demonstrate that this is the right plan*
 - *Plenty of outreach and engagement ahead of us*

