



# Today

## We'll Cover

- Stakeholder Input
- Drill Down on Space Needs
  - Safety and Security
  - Quantity
  - Quality
- A Building by Building Workplan
- Preparing for a Referendum
- Next Steps

## We Won't Cover

- Overall Budget
- Financial Plan
- Referendum Date

## Where Have We Been?

- Extensive Review of Previous Assessment Done - Cunningham Group  
(*Comprehensive Community Planning Committee*)
- Review of 2015 District Enrollment Projections
- Internal Stakeholder Listening Sessions
- Shared Listening Session Results and Gained Administrative Input
  - Meetings with Administration from each building to review information gained from Internal Staff Listening Sessions
- Communicate Results to Staff
  - Information back to Internal Stakeholders at each facility and gain further input

# Where Have We Been?

- Community/Neighborhood Listening Sessions
  - (9 Sessions) approximately 250 community members attended
- Chamber Sponsored Listening Sessions
  - (3 Sessions) 55 Brainerd business members attended
- Tour Other School Facilities (Duluth, Alexandria, TRF)
- Numerous Meetings with District Cabinet, Administrative Committee and Individual Administrators from Each Facility to Gain and Confirm District Information





# Review of Themes From Listening Sessions

# Educational Adequacy Listening Session Common Themes



# Certified Staff - Listening Sessions - Color Codes:

A solid green rectangular box with a thin black border.

Green

**Adequate** – Meets most of the Analysis Criteria including Minnesota Department of Education (MDE) Guidelines for Educational Adequacy – not a perceived staff need

A solid yellow rectangular box with a thin black border.

Yellow

**Questionable Adequacy** – Meets some of the Analysis Criteria, but may be considered adequate based upon current programming/enrollment and/or size of area

A solid red rectangular box with a thin black border.

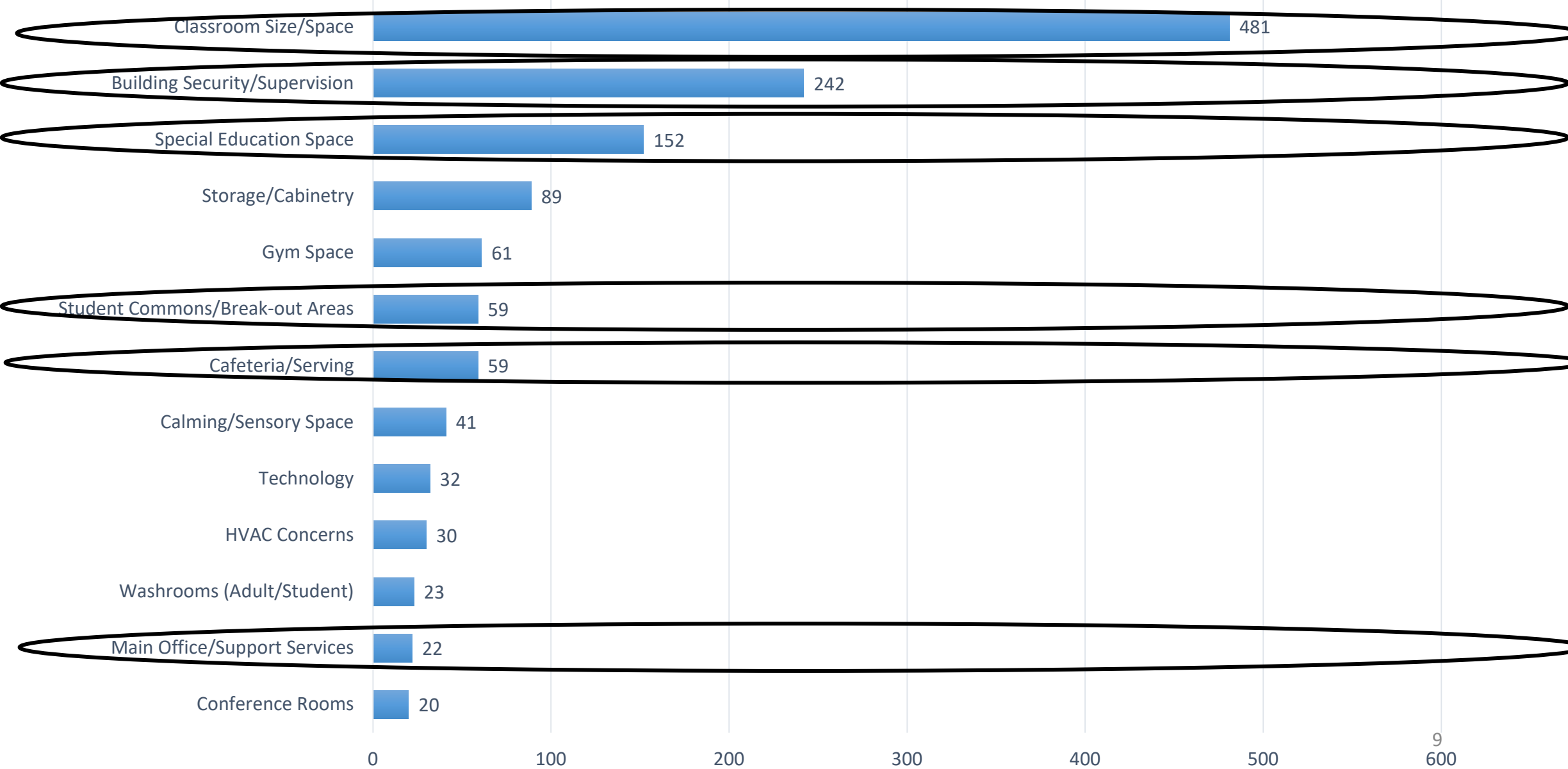
Red

**Inadequate** – Meets one (1) or none of the Analysis Criteria  
- Is perceived as a significant need by staff

# Elementary Facilities: Listening Sessions - Color Charts

CATEGORY	Baxter	Garfield	Harrison	Lowell	Nisswa	Riverside
1 Classroom Size and Suitability	R	Y	R	R	R	Y
2 Cafeteria/Kitchen/Serving	R	R	R	R	Y	R
3 Security and Supervision	R	R	R	R	R	Y
4 Main Office/Nurse/Support Services	R	R	R	R	R	Y
5/6 Science & Art Class/labs	R	R	R	R	Y	R
7 Music Classrooms/Practice Areas/Etc.	Y	Y	R	R	R	G
8 Staff Lounge/Collaborative Planning Areas	R	R	R	R	Y	Y
9 Student Commons/Break-Out Areas	R	R	R	R	R	R
10 Phy Ed./Athletics/Gym/Locker Rooms/Pool Etc.	R	Y	R	Y	R	R
11 Site Suitability: Fields/Green Space/ Storage Etc.	R	Y	R	Y	G	Y
12 Parking/Bus Drop-Off: Staff/Students/Parents	R	R	R	R	Y	R
13 Technology	Y	Y	R	Y	Y	G
14 Library/Media Center: Location/Size/Layout	Y	G	R	R	G	G
15 Special Education/Support Services	R	R	R	R	R	R
16 Auditoriums/Performing Arts Spaces	Y	Y	R	Y	Y	Y
17 Career and Technical Education	NA	NA	NA	NA	NA	NA
18 Hallways/Lockers/Washrooms/Maint. space	R	R	R	R	Y	Y

# Certified Staff Prioritized Facility Needs - All Elementary Schools

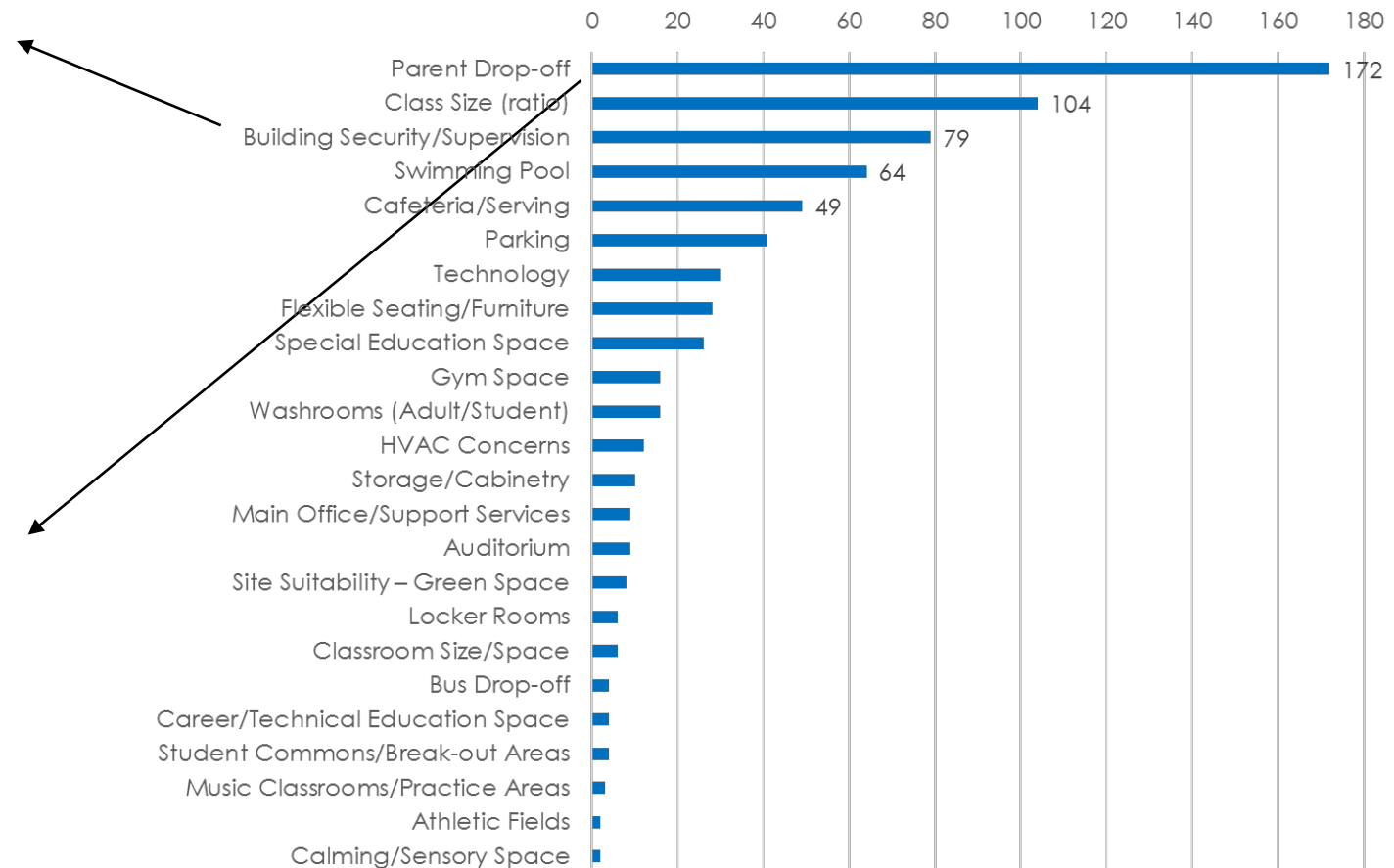




# Forestview Middle School

CATEGORY		COLOR
1	Classroom Size and Suitability	G
2	Cafeteria/Kitchen/Serving	G
3	Security and Supervision	Y
4	Main Office/Nurse/Support Services	G
5	Science Classrooms/Labs	G
6	Art Classrooms/Labs	G
7	Music Classrooms/Practice Areas/Etc.	G
8	Staff Lounge/Collaborative Planning Areas	G
9	Student Commons/Break-Out Areas	G
10	Physical Ed./Athletics/Gym/Locker Rooms/Pool Etc.	G
11	Site Suitability: Fields/Green Space/ Storage Etc.	G
12	Parking/Bus Drop-Off: Staff/Students/Parents	R
13	Technology	G
14	Library/Media Center: Location/Size/Layout	G
15	Special Education/Support Services	G
16	Auditoriums/Performing Arts Spaces	G
17	Career and Technical Education	G
18	Hallways/Lockers/Washrooms/Maintenance space	G

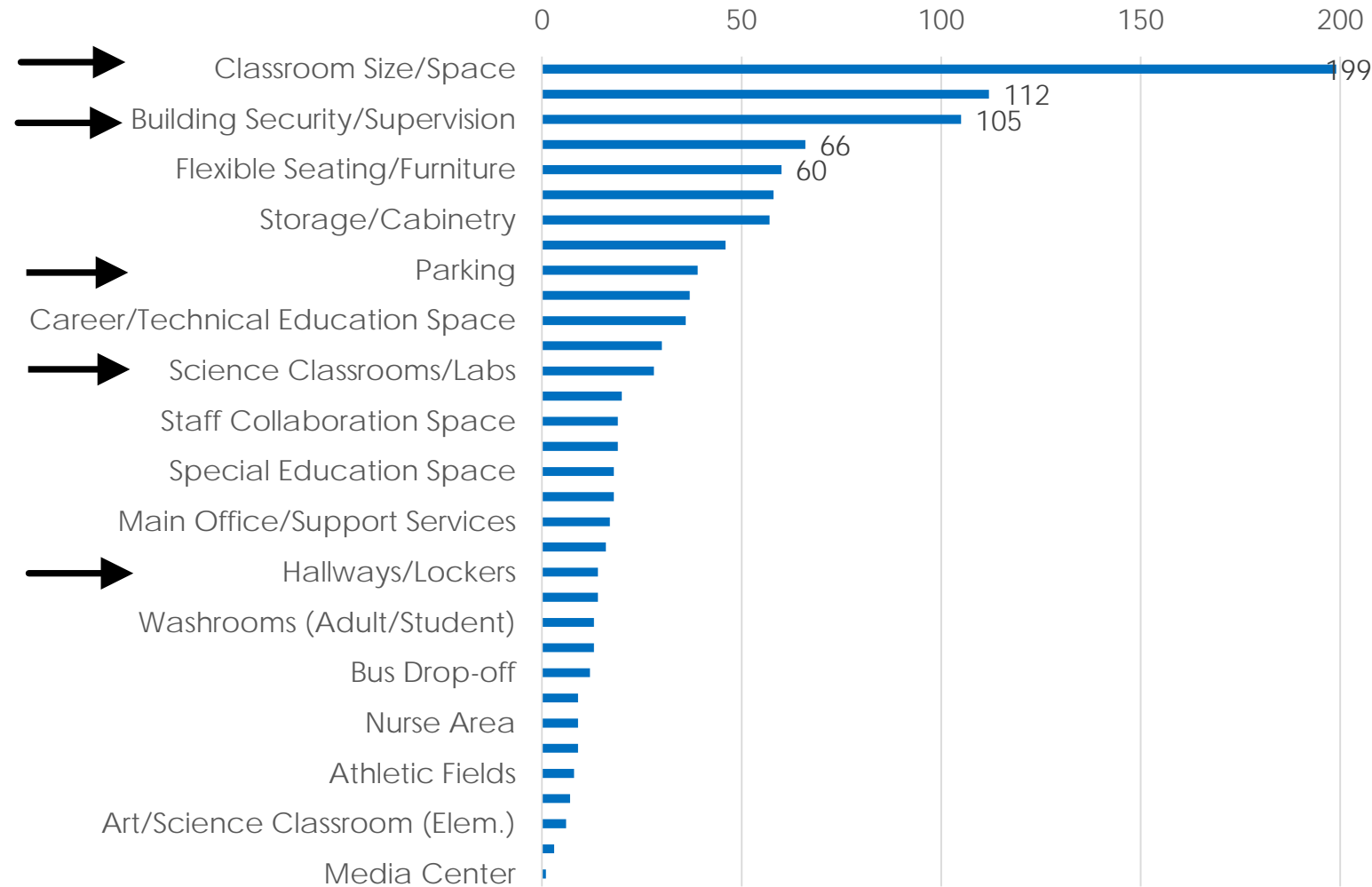
Forestview Middle School - Certified Staff Prioritized Needs



# Brainerd High School

	CATEGORY	COLOR
➔ 1	Classroom Size and Suitability	R
2	Cafeteria/Kitchen/Serving	Y
➔ 3	Security and Supervision	R
4	Main Office/Nurse/Support Services	Y
➔ 5	Science Classrooms/Labs	R
6	Art Classrooms/Labs	Y
7	Music Classrooms/Practice Areas/Etc.	Y
8	Staff Lounge/Collaborative Planning Areas	G
9	Student Commons/Break-Out Areas	R
10	Physical Ed./Athletics/Gym/Locker Rooms/Pool Etc.	Y
11	Site Suitability: Fields/Green Space/ Storage Etc.	G
➔ 12	Parking/Bus Drop-Off: Staff/Students/Parents	R
13	Technology	Y
14	Library/Media Center: Location/Size/Layout	Y
15	Special Education/Support Services	Y
16	Auditoriums/Performing Arts Spaces	R
17	Career and Technical Education	Y
➔ 18	Hallways/Lockers/Washrooms/Maintenance space	R

## Brainerd High School - Certified Staff Prioritized Needs



# Neighborhood / Community Listening Session Common Themes

- Great Teachers
- Great Staff
- Many and Varied Educational Opportunities
- Strong Neighborhood Welcoming Feel to Schools

*Listening to the voices of our community*

## **You're Invited** **Public Listening Sessions**

Regarding Brainerd Public Schools Facilities

May 1	5:30-7:00pm	Riverside cafeteria
May 2	6:30-8:00pm	Harrison gym
May 4	5:30-7:00pm	Nisswa gym
May 9	4:00-5:30pm	Washington room 200
May 9	5:30-7:00pm	Garfield gym
May 11	5:30-7:00pm	Lowell gym
May 18	5:30-7:00pm	Baxter gym
May 23	7:00-8:30pm	Brainerd High cafeteria
May 24	6:00-7:30pm	Forestview cafetorium

*Child care for school age children available*

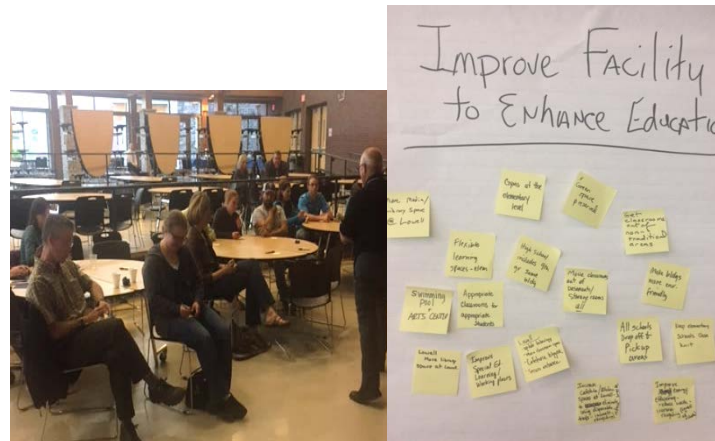
*All are welcome!*

 **Blueprint 181**  
*Investing. Growing. Leading.*



# Neighborhood / Community Listening Session Common Themes

- Safety and Security Concerns Across District
- Inadequate Physical Space - Elementary Schools
- Inefficient, Fragmented Secondary School Facilities
- Facilities are Aged with Significant Deferred Maintenance
- Need to Keep Current and Improve Technology Districtwide



# Chamber Sponsored Listening Session Common Themes

- Great Teachers and Staff
- Quality Education
- Continue to Support and Expand Workplace Connection Initiatives with School District
  - Internships
  - School to Work
  - Community and Business Partnerships





# Chamber Sponsored Listening Session Common Themes

- Collaborate Learning Opportunities with CLC
- Show How More Space Benefits Quality of Education
- Strengthen Pride in Our Community and Schools
- Improve Communication to Allow Business Community to “get in the loop” and Contribute to School/Community Success



# Site Visit Overviews



## *Duluth School District*

Homecroft Elementary, Lester Park Elementary  
and Myers-Wilkins Elementary Schools



## *Alexandria School District*

Alexandria Area High School



## *Thief River Falls School District*

Lincoln High School  
Challenger Elementary School



# *Findings From Stakeholder Input*

- Brainerd Schools – Great Teachers and Staff
- Quality Educational Opportunities
- Neighborhood Schools - Very Important
- High School Campus Location – Valued Part of Community
- Business Community Requesting Enhanced Communication, Workforce Development Partnerships, Robust Career/Technical Education Opportunities, and Technology Integration
- Forestview Middle School is a Quality Facility and Currently has Appropriate Amount of Space



# *Findings From Stakeholder Input*

- Lack of Physical and Functional Space at Elementary Schools and Functional Space at the Secondary Schools, Results in an Inequality of Educational Delivery
- Facilities Faced with Significant Deferred Maintenance Needs  
*(With Exception Of Forestview Middle School)*
- Safety and Security Concerns Across District
- Parking and Pick Up-Drop Off Concerns Across District  
*(Need For Separation of Bus/Parent Drop Off-Pick Up)*



# Challenges in Our Elementary Schools



# Challenges In Our Elementary Schools

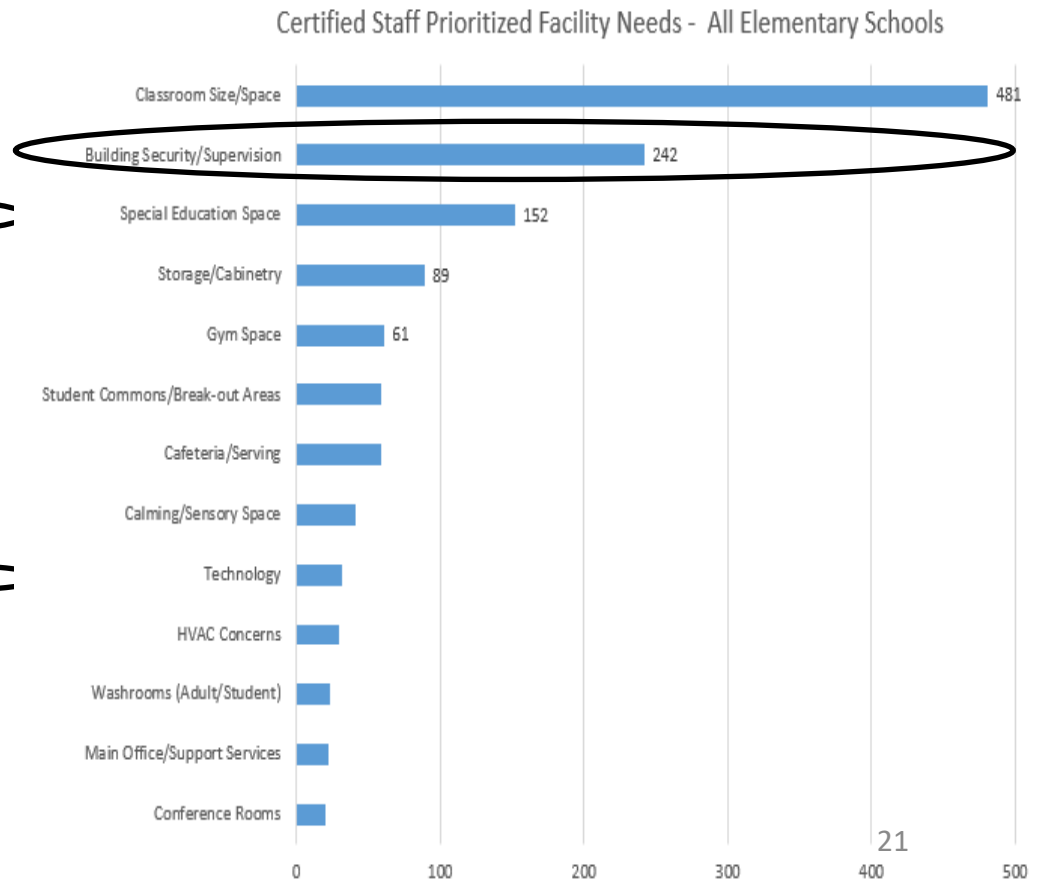
- Safety and Security
- Inadequate Physical Space
- Classrooms Don't Reflect Current Instruction Needs
- Age => Significant Deferred Maintenance



# Safety and Security

- Lack of Controlled and Supervised Entrances to Facilities
- Lack of Parking and Separation of Parent and Bus Drop Off-Pick Up
- Lack of Security Surveillance Cameras

CATEGORY	Baxter	Garfield	Harrison	Lowell	Nisswa	Riverside
1 Classroom Size and Suitability	R	Y	R	R	R	Y
2 Cafeteria/Kitchen/Serving	R	R	R	R	Y	R
3 Security and Supervision	R	R	R	R	R	Y
4 Main Office/Nurse/Support Services	R	R	R	R	R	Y
5/6 Science & Art Class/labs	R	R	R	R	Y	R
7 Music Classrooms/Practice Areas/Etc.	Y	Y	R	R	R	G
8 Staff Lounge/Collaborative Planning Areas	R	R	R	R	Y	Y
9 Student Commons/Break-Out Areas	R	R	R	R	R	R
10 Phy Ed./Athletics/Gym/Locker Rooms/Pool Etc.	R	Y	R	Y	R	R
11 Site Suitability: Fields/Green Space/ Storage Etc.	R	Y	R	Y	G	Y
12 Parking/Bus Drop-Off: Staff/Students/Parents	R	R	R	R	Y	R
13 Technology	Y	Y	R	Y	Y	G
14 Library/Media Center: Location/Size/Layout	Y	G	R	R	G	G
15 Special Education/Support Services	R	R	R	R	R	R
16 Auditoriums/Performing Arts Spaces	Y	Y	R	Y	Y	Y
17 Career and Technical Education	NA	NA	NA	NA	NA	NA
18 Hallways/Lockers/Washrooms/Maint. space	R	R	R	R	Y	Y



# Neighborhood / Community Listening Session Common Themes

- Safety and Security Concerns Across District
- Inadequate Physical Space - Elementary Schools
- Inefficient, Fragmented Secondary School Facilities
- Facilities are Aged With Significant Deferred Maintenance
- Need to Keep Current and Improve Technology Districtwide



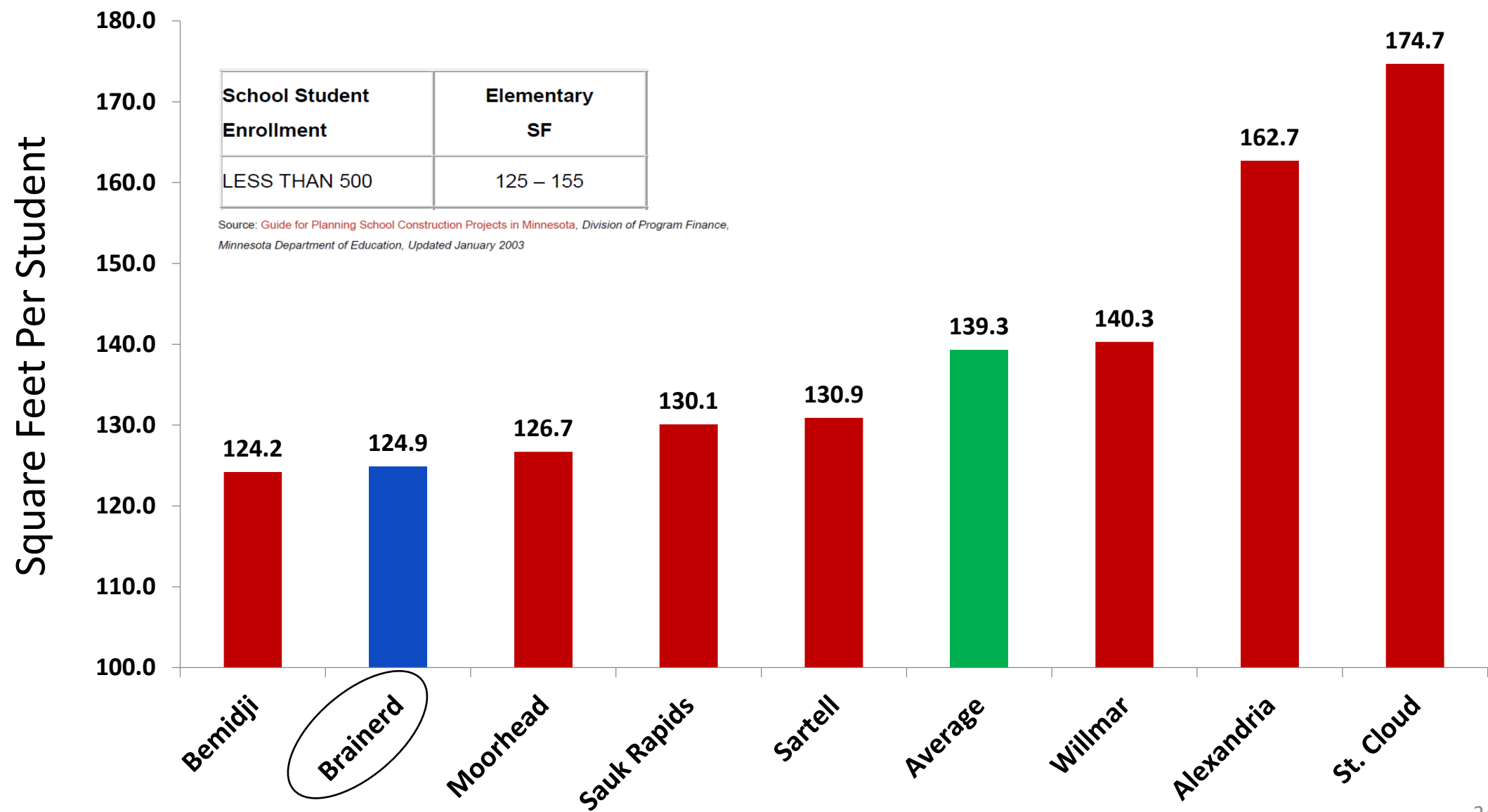
# Inadequate Physical Space

- Physical Classroom Size Does Not Meet Changing Standards and Learning Needs
- Limited Student and Staff Collaboration Opportunities
- Special Education Programming Requires Added and Specialized Spaces
- Limited Flexibility in Ability to Offer Educational Enrichment Programs *(i.e. maker space, science experimentation, etc.)*



Forces Educators to Make Trade Offs Between Quality Educational Programs and Accommodations for Students Using Fixed Spaces

# Elementary School Space Comparison





## BEMIDJI SCHOOL REFERENDUM: Voters approve new school

By [Bethany Wesley](#) on Nov 5, 2014 at 1:08 a.m.



BEMIDJI -- It was a yes-yes vote for schools on Tuesday as voters passed both questions in the referendum to authorize funding to construct and operate a new fourth- and fifth-grade elementary school.



## Groundbreaking for new Moorhead Elementary School

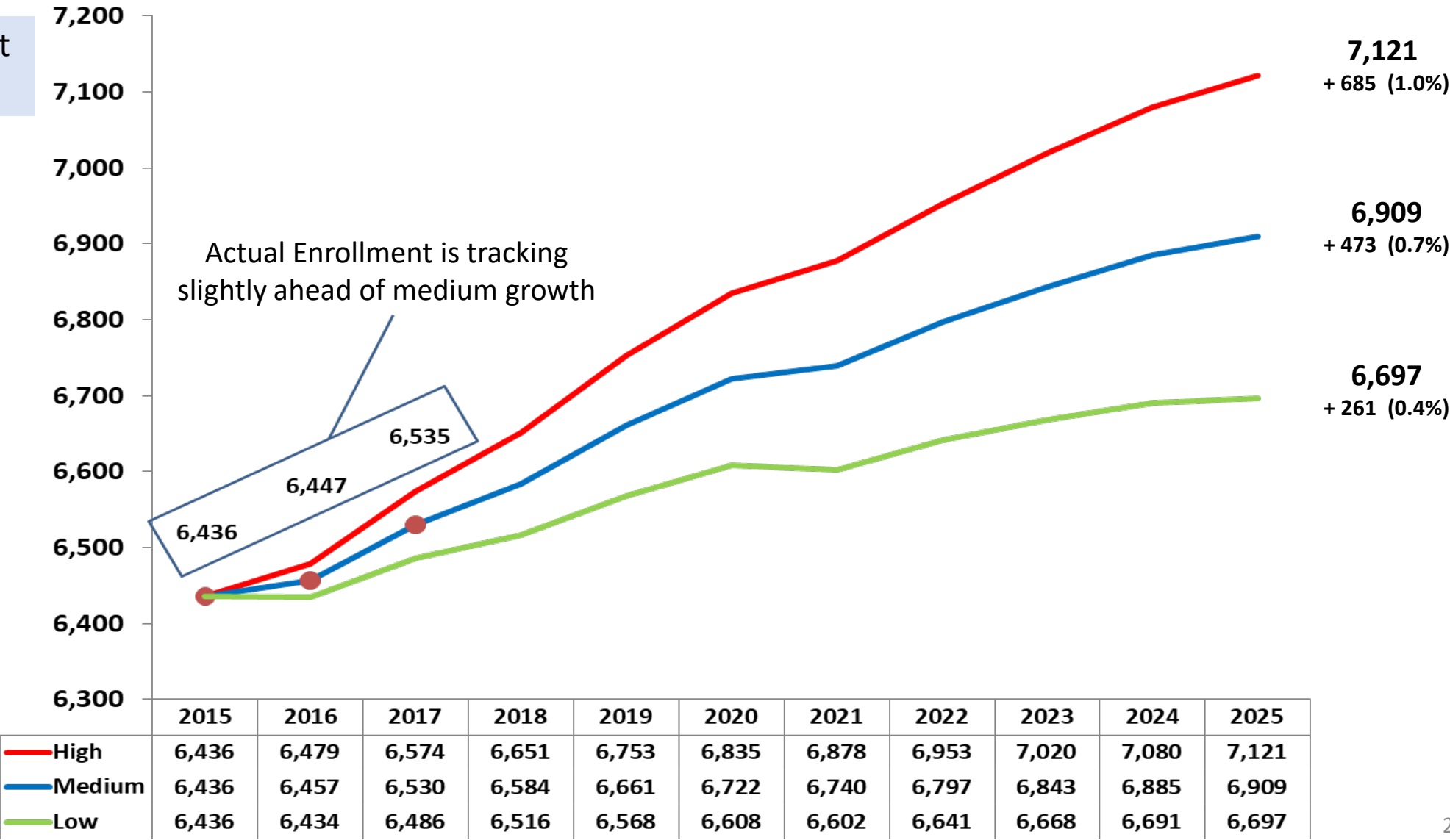
Wed 9:44 PM, May 04, 2016



**MOORHEAD, Minn. (Valley News Live)** -- Moorhead Public Schools celebrated the start of construction on their newest school on Wednesday.

The new 110,000 square foot k-4 elementary school will be located along 24th avenue south and 42nd street south. Parents, teachers and students are excited for the school's opening for the fall of 2017.

# Projected Enrollment Growth



# Capacity Of Schools

## Elementary Schools



## Middle School



## High School



300 - 475  
Current and Projected  
Space Need

\* LEC, AEC and Early Childhood  
Enrollment Not Included

# Classrooms Don't Reflect Current Instruction Needs

- Limited Ability to Easily Adjust Current Spaces to Allow for Changing Educational Learning Dynamics
- Limited Ability to Offer Individualized Learning
- Limited Student and Staff Collaboration Opportunities
- Special Education Programming Requires Additional and Specialized Space

Has Created Inequality of Educational Programming Due to Facility and Site Restrictions

# Most Educational Spaces Need Improvement

- Classrooms
- Cafeteria and Kitchen
- Science and Art
- Support Services
- Student Commons
- Special Education
- Teacher and Student Collaboration
- Gymnasiums

CATEGORY	Baxter	Garfield	Harrison	Lowell	Nisswa	Riverside
1 Classroom Size and Suitability	R	Y	R	R	R	Y
2 Cafeteria/Kitchen/Serving	R	R	R	R	Y	R
3 Security and Supervision	R	R	R	R	R	Y
4 Main Office/Nurse/Support Services	R	R	R	R	R	Y
5/6 Science & Art Class/labs	R	R	R	R	Y	R
7 Music Classrooms/Practice Areas/Etc.	Y	Y	R	R	R	G
8 Staff Lounge/Collaborative Planning Areas	R	R	R	R	Y	Y
9 Student Commons/Break-Out Areas	R	R	R	R	R	R
10 Phy Ed./Athletics/Gym/Locker Rooms/Pool Etc.	R	Y	R	Y	R	R
11 Site Suitability: Fields/Green Space/ Storage Etc.	R	Y	R	Y	G	Y
12 Parking/Bus Drop-Off: Staff/Students/Parents	R	R	R	R	Y	R
13 Technology	Y	Y	R	Y	Y	G
14 Library/Media Center: Location/Size/Layout	Y	G	R	R	G	G
15 Special Education/Support Services	R	R	R	R	R	R
16 Auditoriums/Performing Arts Spaces	Y	Y	R	Y	Y	Y
17 Career and Technical Education	NA	NA	NA	NA	NA	NA
18 Hallways/Lockers/Washrooms/Maint. space	R	R	R	R	Y	Y

# Age => Significant Deferred Maintenance

*Renewal and Update of Facility Systems that Have Reached the End of Their Useful Life and Facility Deficiencies the District Has Not had Funds to Address*

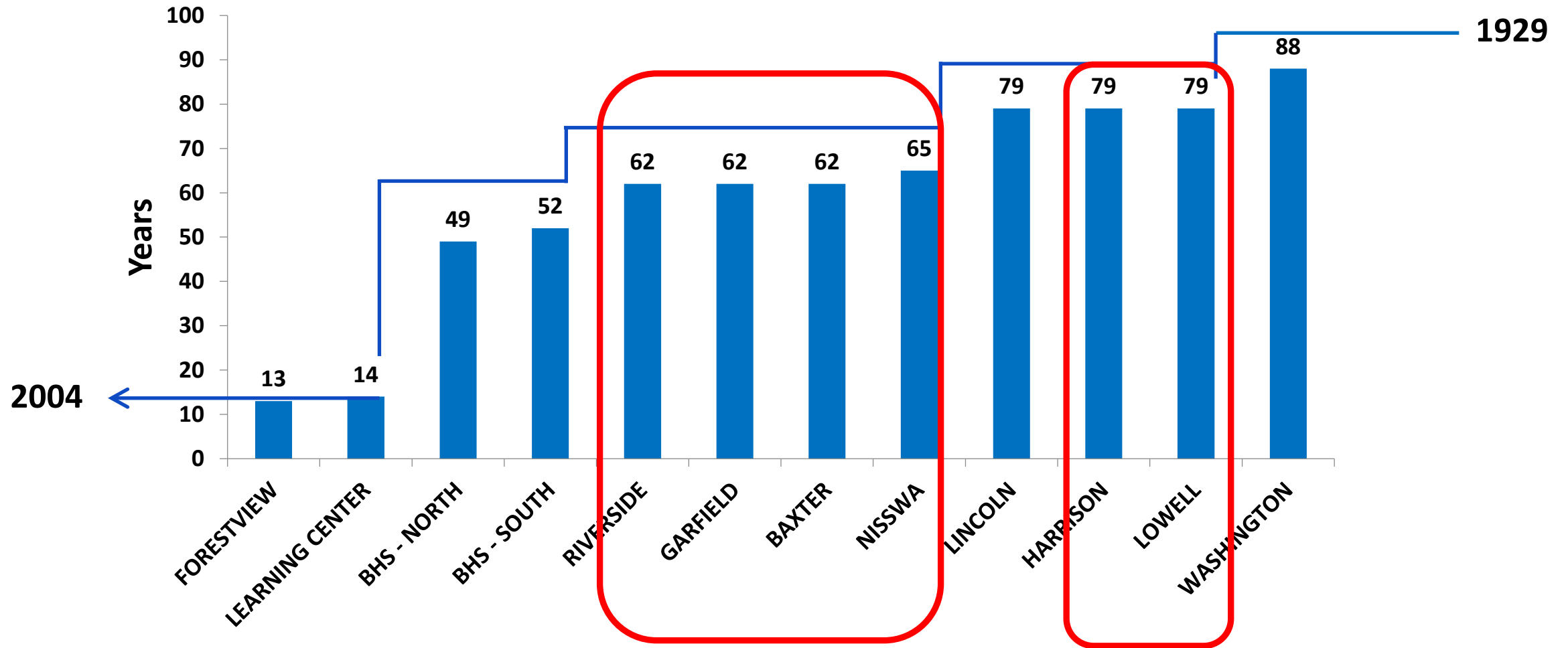
- Roofs
- Windows
- Doors
- Parking Lots
- Boilers
- Mechanical and Electrical Systems
- Flooring
- Food Service Equipment
- Americans with Disabilities (ADA)





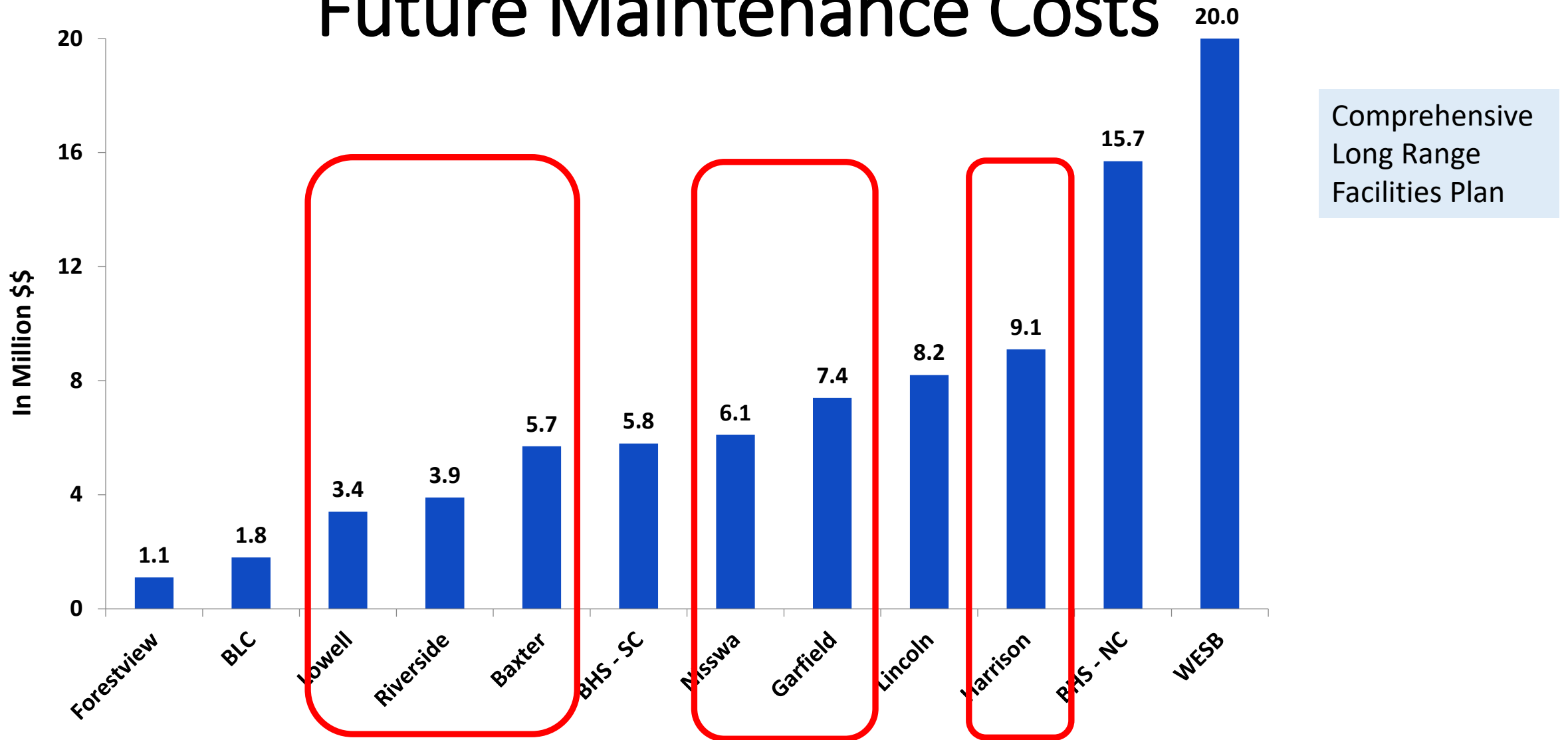
# Age of Schools

FY '17 MDE Building  
Age Report



Average Age of 6 Elementary Schools = 68 years

# Future Maintenance Costs



# District Comprehensive Long Range Facility Plan

## Shaped and Enhanced: Site Strategies *Brainerd Elementary Schools*



# Renew and Right-Size

- Garfield Elementary
- Lowell Elementary
- Nisswa Elementary
- Riverside Elementary

# Replace

- Baxter Elementary

# TBD

- Harrison Elementary



# Elementary School Size Options

	Building	Fall 2017 Enrollment	Proposed Capacity	Early Childhood
Right-Size	Garfield Elementary	393	375 (3 section)	
	Lowell Elementary	429	375 (2 section + Gifted Talented)	
	Nisswa Elementary	300	375 (3 section)	2 CR
	Riverside Elementary	600	500 (4 section)	
	Harrison Elementary (existing site)	269	500 (4 section)	
Replace	Harrison Elementary (new site)	*	*	3 CR
	Baxter Elementary (new site)	497	625 (5 section)	4 CR
	<b>Total</b> (Target 2,650–2,750)**	2,488	2,750	9 CR

\* Number proposed same as existing “Right-Size” Harrison, but the core capacity for 625 students.

\*\* Mid-range 10-year projection for district elementary level K–4 enrollment is +150 students.

# Early Childhood

- 65% of population served in future = 726 students
- Requires 23 Classrooms
- 9 Classrooms Already Included in Shaped and Enhanced Plan
- Still Need 23,500 Sq. Ft. to Meet Future Demand





# Garfield Elementary School



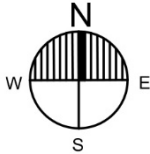
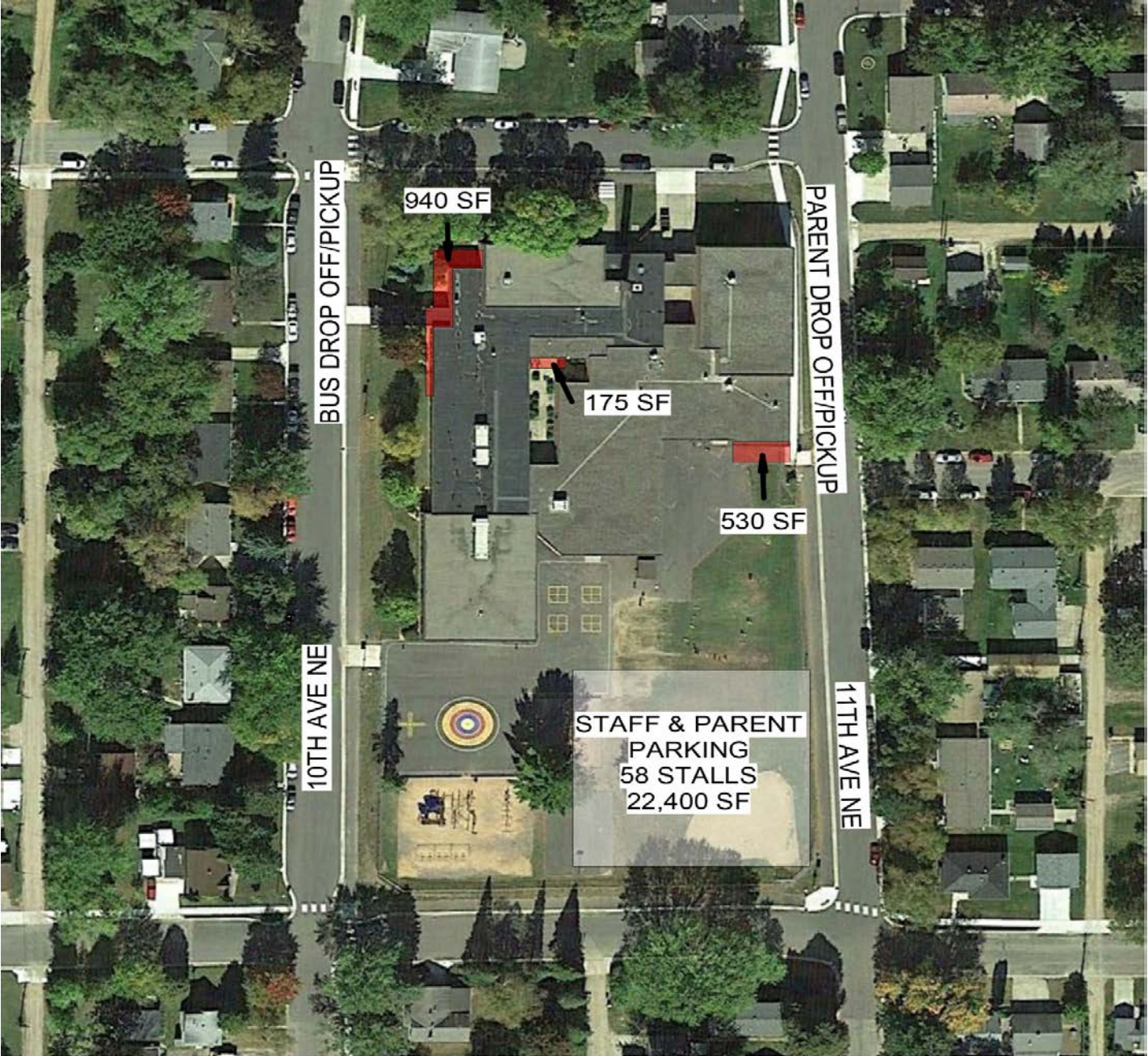


# Representation of MDE Site Guidelines at Current Garfield Elementary School Site





# Garfield Elementary School

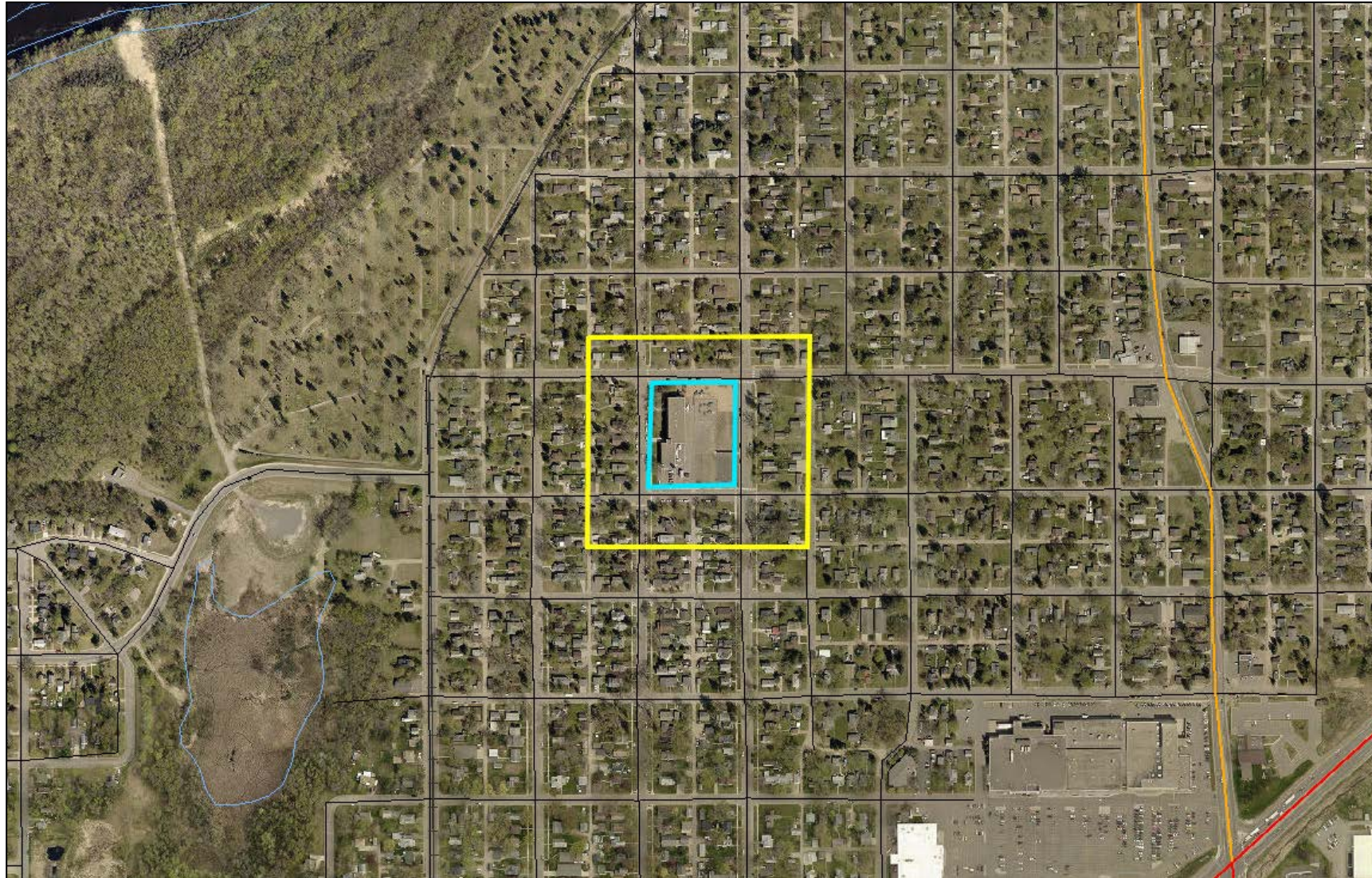


# Lowell Elementary School



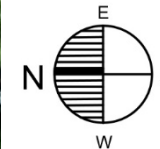
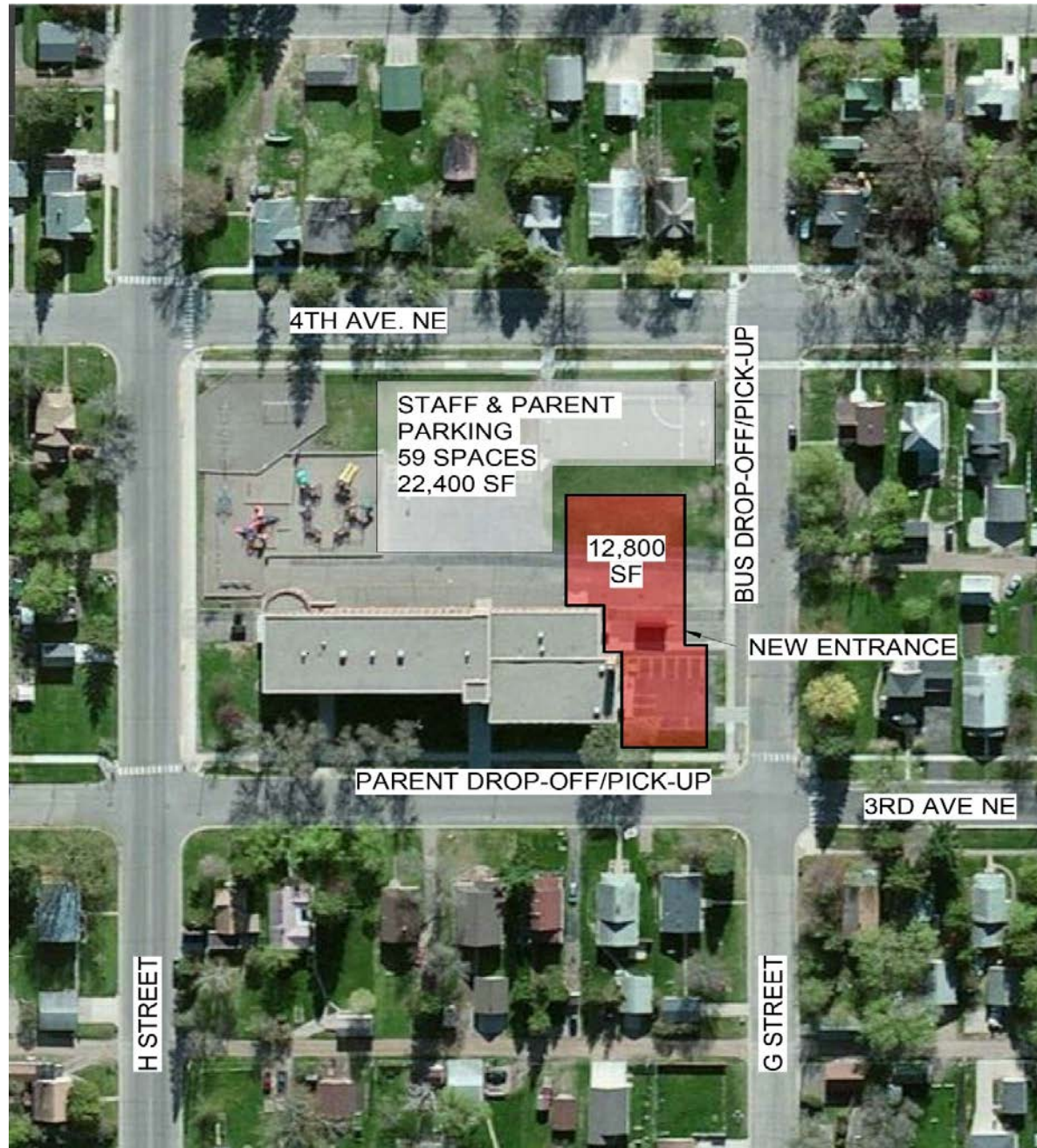


# Representation of MDE Site Guidelines at Current Lowell Elementary School Site





# Lowell Elementary School

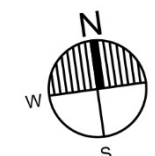




# Nisswa Elementary School



# Nisswa Elementary School

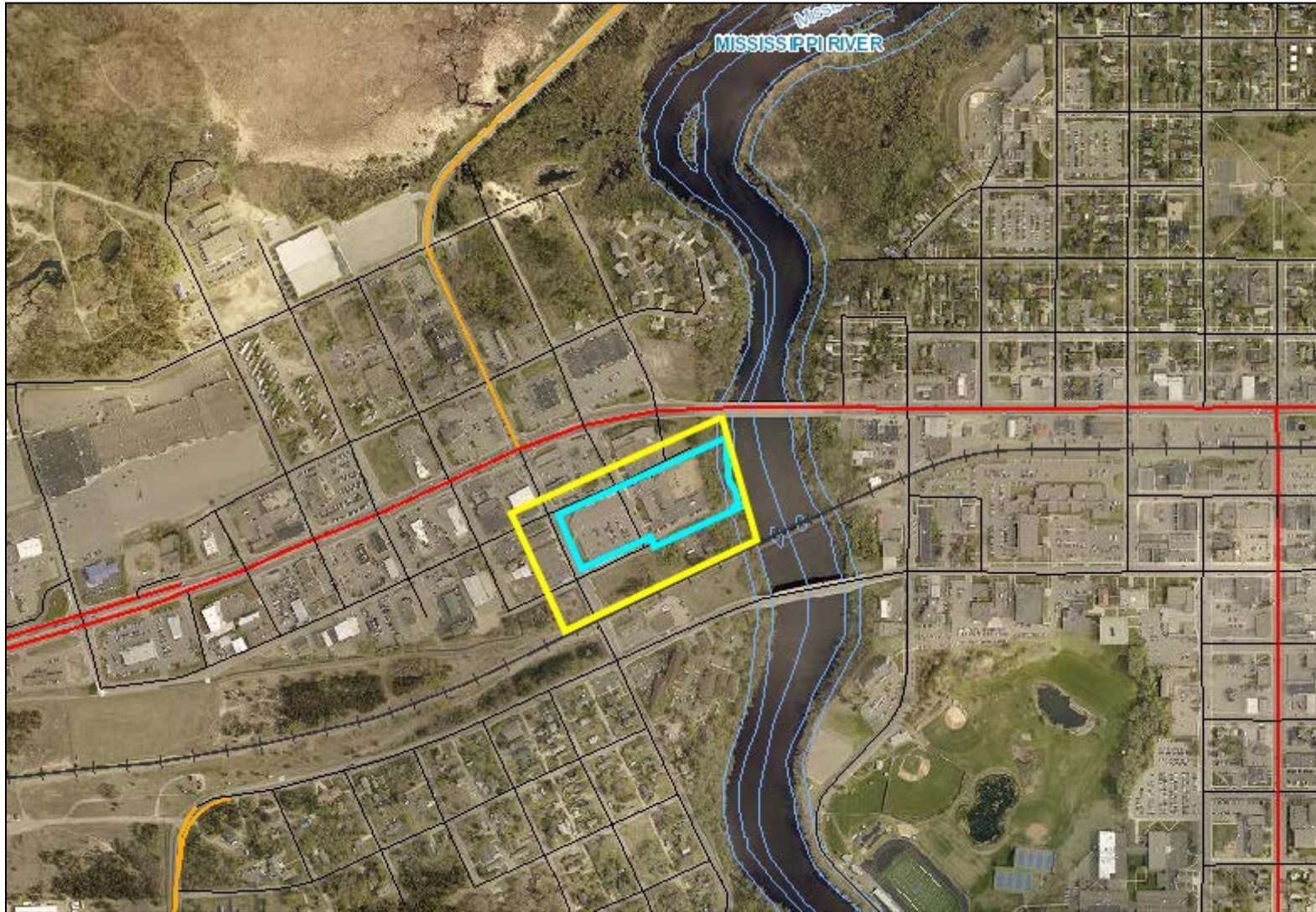




# Riverside Elementary School

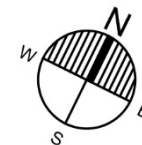
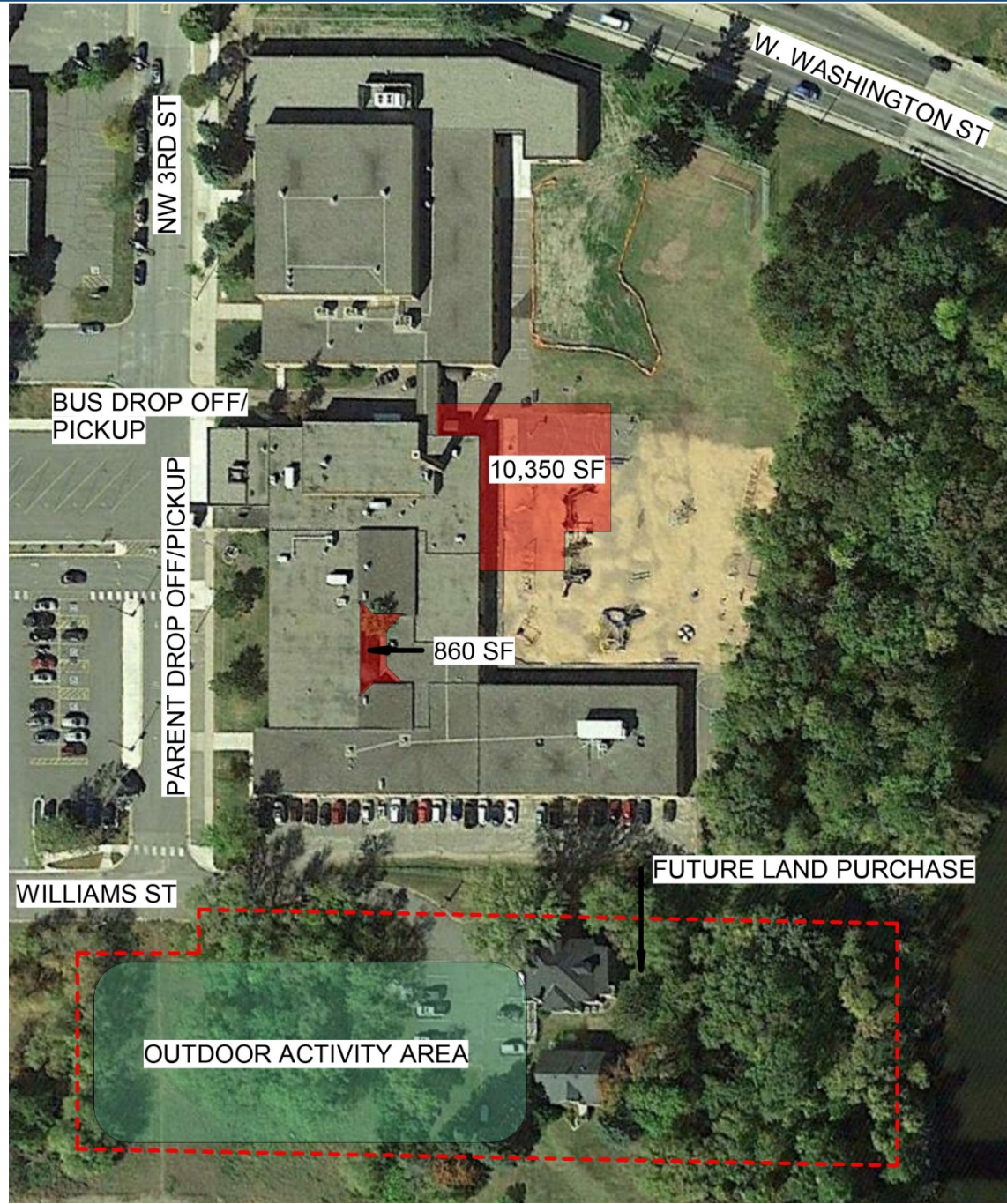


# Representation of MDE Site Guidelines at Current Riverside Elementary School Site





# Riverside Elementary School



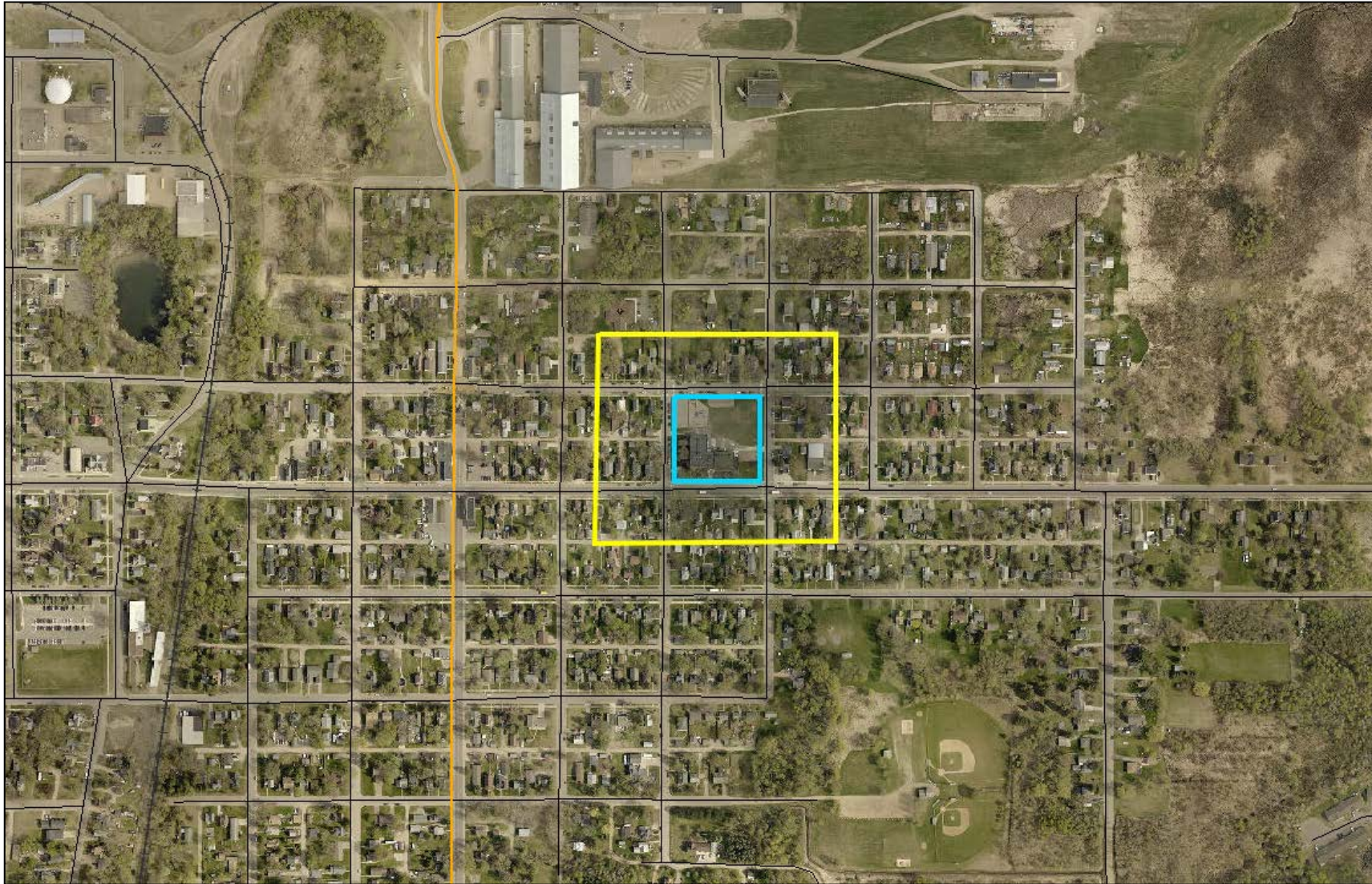


# Harrison Elementary School



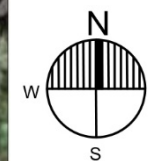


# Representation of MDE Site Guidelines at Current Harrison Elementary School Site



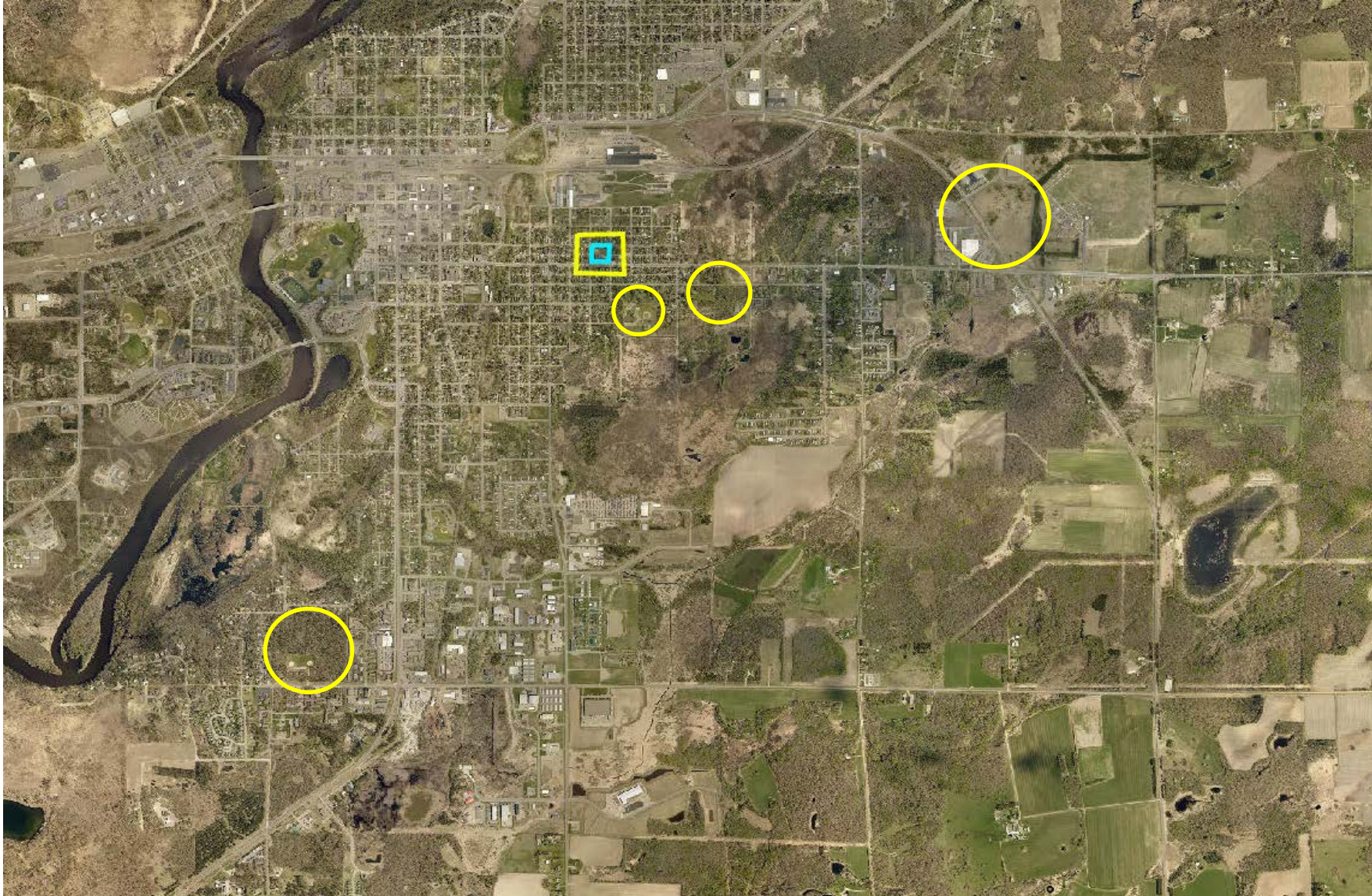


# Harrison Elementary School (Addition)



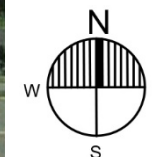
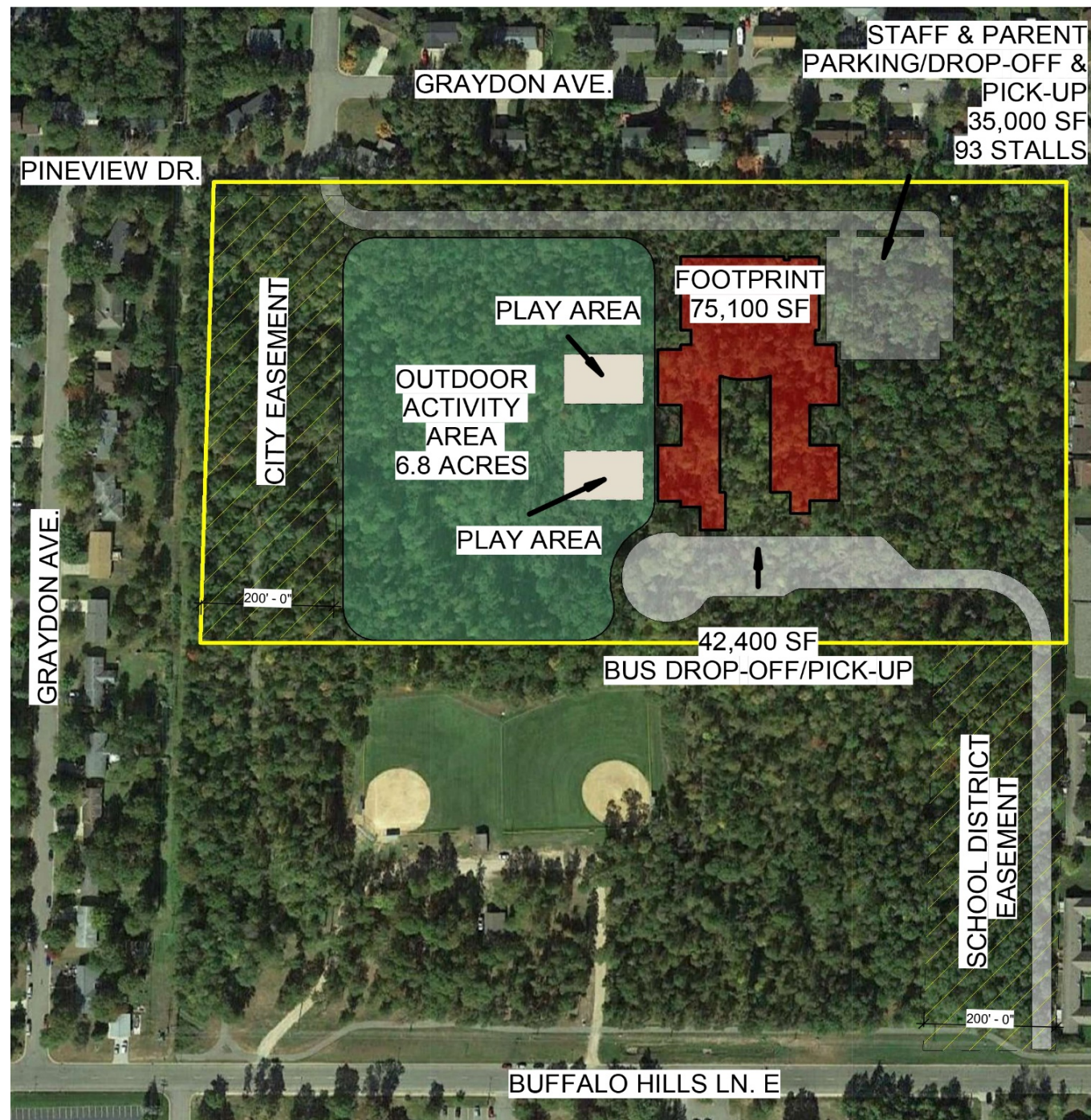


# Possible Sites For Harrison Elementary Based On Size





# Harrison Elementary School (New)





# Baxter Elementary School



# Current Baxter Elementary School Site



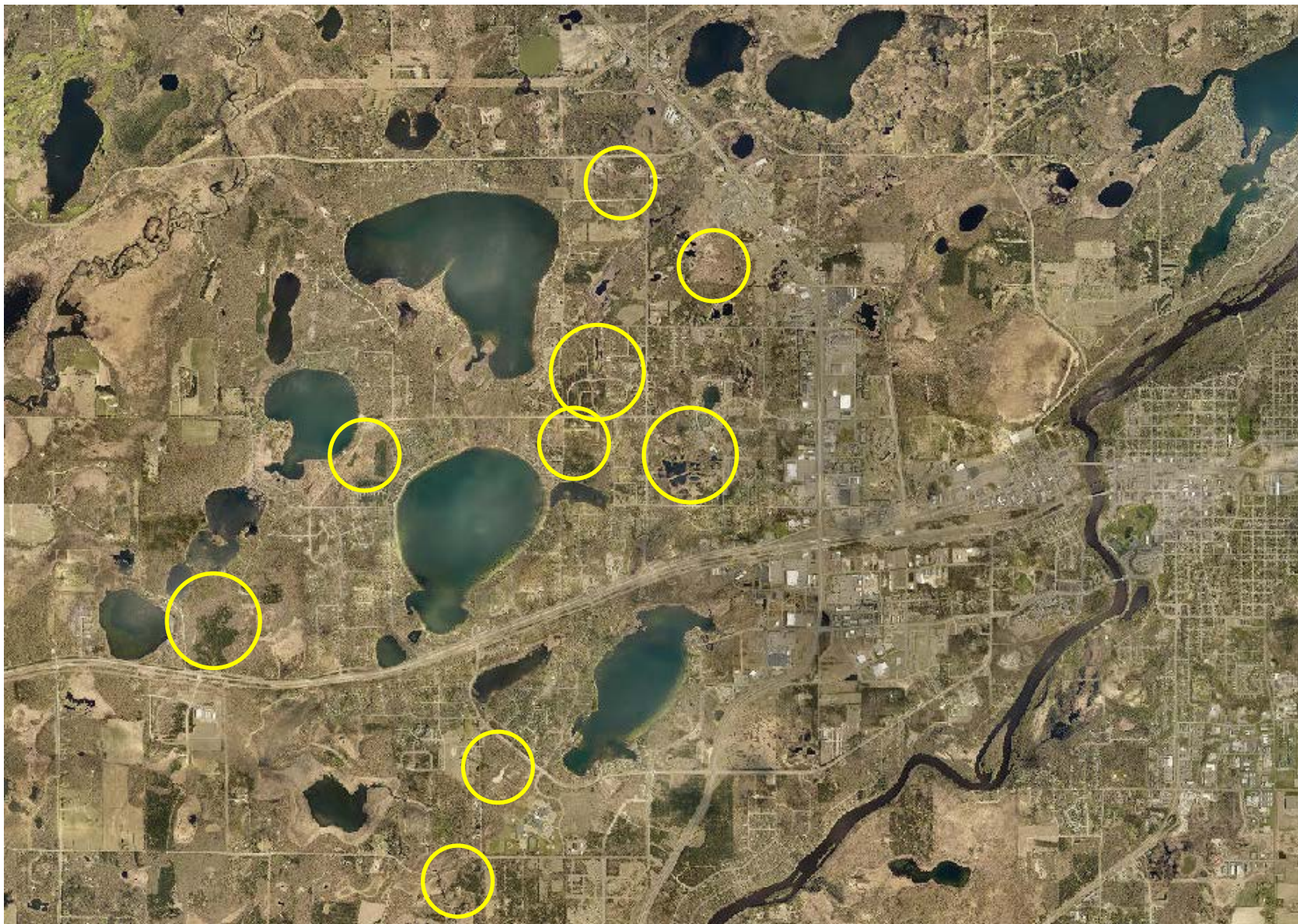


# Representation of MDE Site Guidelines at Current Baxter Elementary School Site



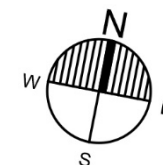


# Possible Sites For Baxter Elementary Based On Size



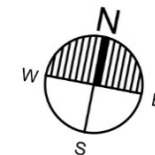
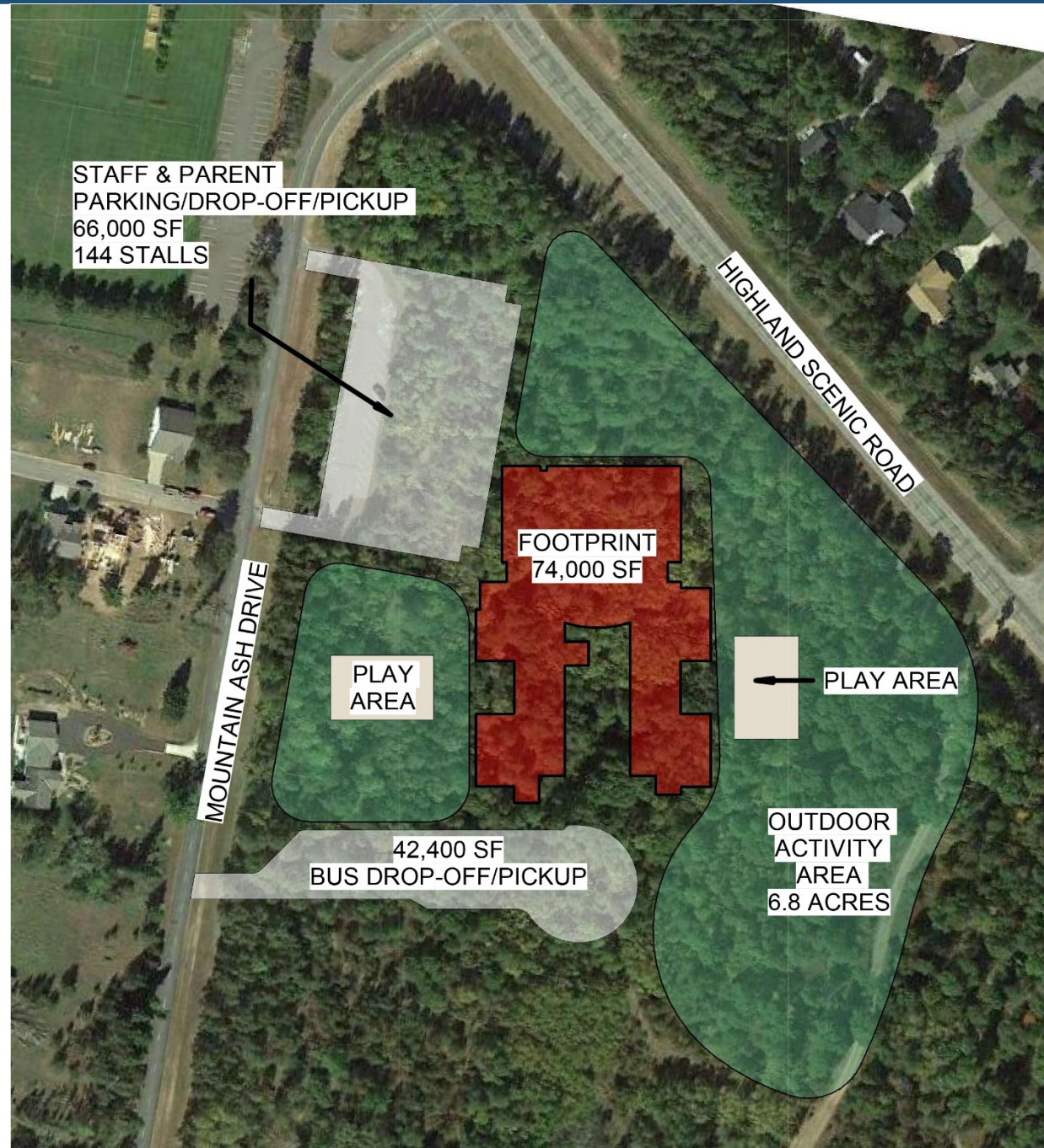


# Baxter Elementary School (New)





# Baxter Elementary School (New)





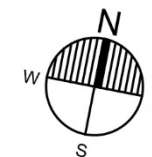
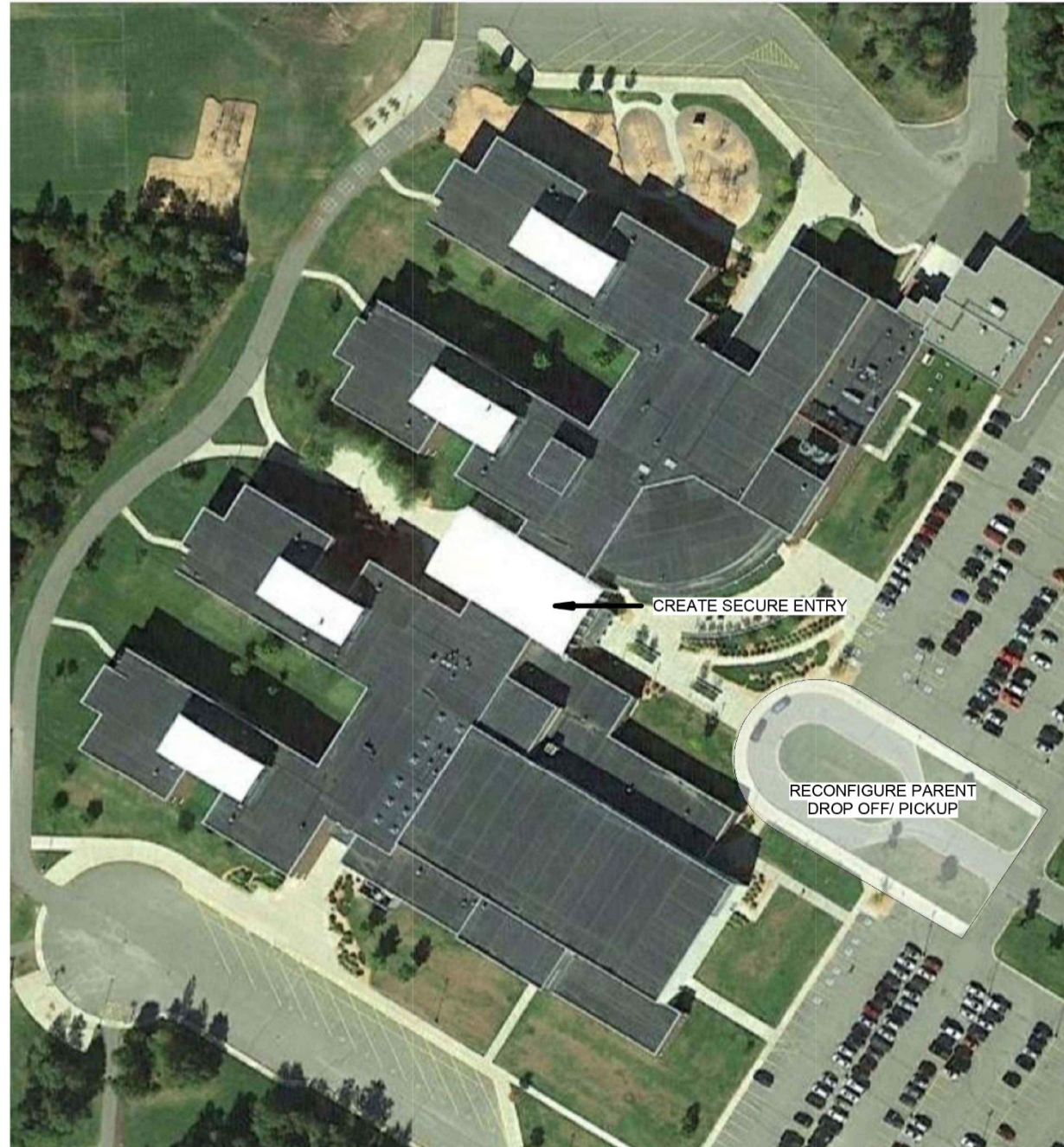
# Brainerd Secondary School Facilities



# Challenges in Our Secondary Schools



# Forestview Middle School



# Challenges in Our Remaining Secondary Schools

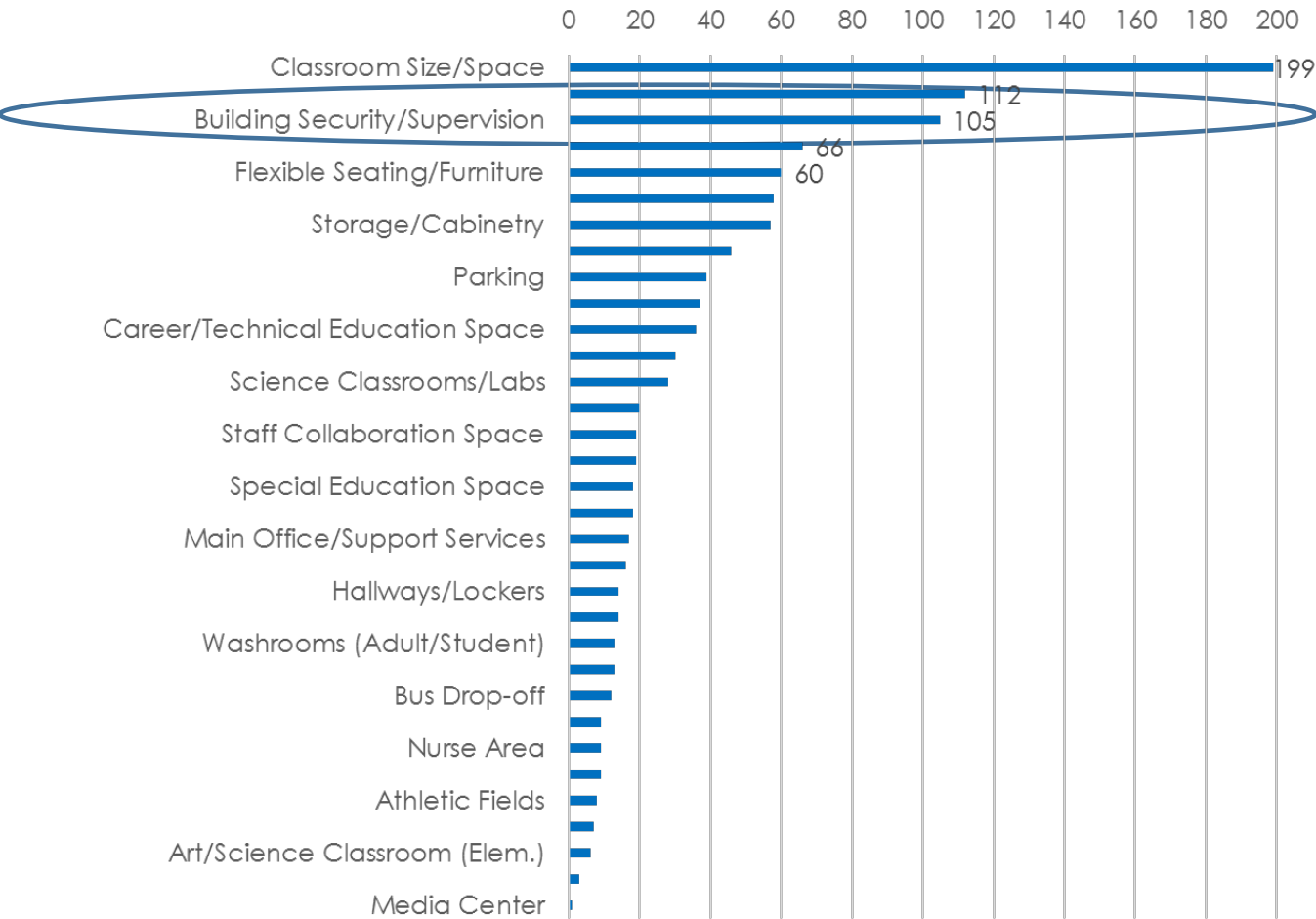
- Safety and Security
- Inefficient, Fragmented Campus
- Age => Significant Deferred Maintenance





# Safety and Security

- Lack of Controlled and Supervised Entrances to Facilities
- Lack of Parking and Separation of Parent and Bus Drop Off-Pick Up
- Lack of Security Surveillance Cameras



CATEGORY		COLOR
1	Classroom Size and Suitability	R
2	Cafeteria/Kitchen/Serving	Y
3	Security and Supervision	R
4	Main Office/Nurse/Support Services	Y
5	Science Classrooms/Labs	R
6	Art Classrooms/Labs	Y
7	Music Classrooms/Practice Areas/Etc.	Y
8	Staff Lounge/Collaborative Planning Areas	G
9	Student Commons/Break-Out Areas	R
10	Physical Ed./Athletics/Gym/Locker Rooms/Pool Etc.	Y
11	Site Suitability: Fields/Green Space/ Storage Etc.	G
12	Parking/Bus Drop-Off: Staff/Students/Parents	R
13	Technology	Y
14	Library/Media Center: Location/Size/Layout	Y
15	Special Education/Support Services	Y
16	Auditoriums/Performing Arts Spaces	R
17	Career and Technical Education	Y
18	Hallways/Lockers/Washrooms/Maintenance space	R

# Inefficient, Fragmented Campus

- Fixed Learning Spaces with Limited Flexibility to Adjust Current Spaces to Allow for Changing Educational Learning Dynamics
- Limited Collaborative Opportunities for Students and Staff Collaboration Opportunities
- Current Layout Lacks Common Spaces for Students, Staff and Community to Gather

# Inefficient, Fragmented Campus

- Two Building Footprint Intensifies Challenges
- Students Travel by Foot Between North, South and WESB for Educational Programs – Inefficient Use of Educational Time
- CTE Programs Located in Both N&S buildings. Limits Staff Collaboration and Sharing of Resources



# Age => Significant Deferred Maintenance

*Renewal and Update of Facility Systems that Have Reached the End of Their Useful Life and Facility Deficiencies the District Has Not had Funds to Address*

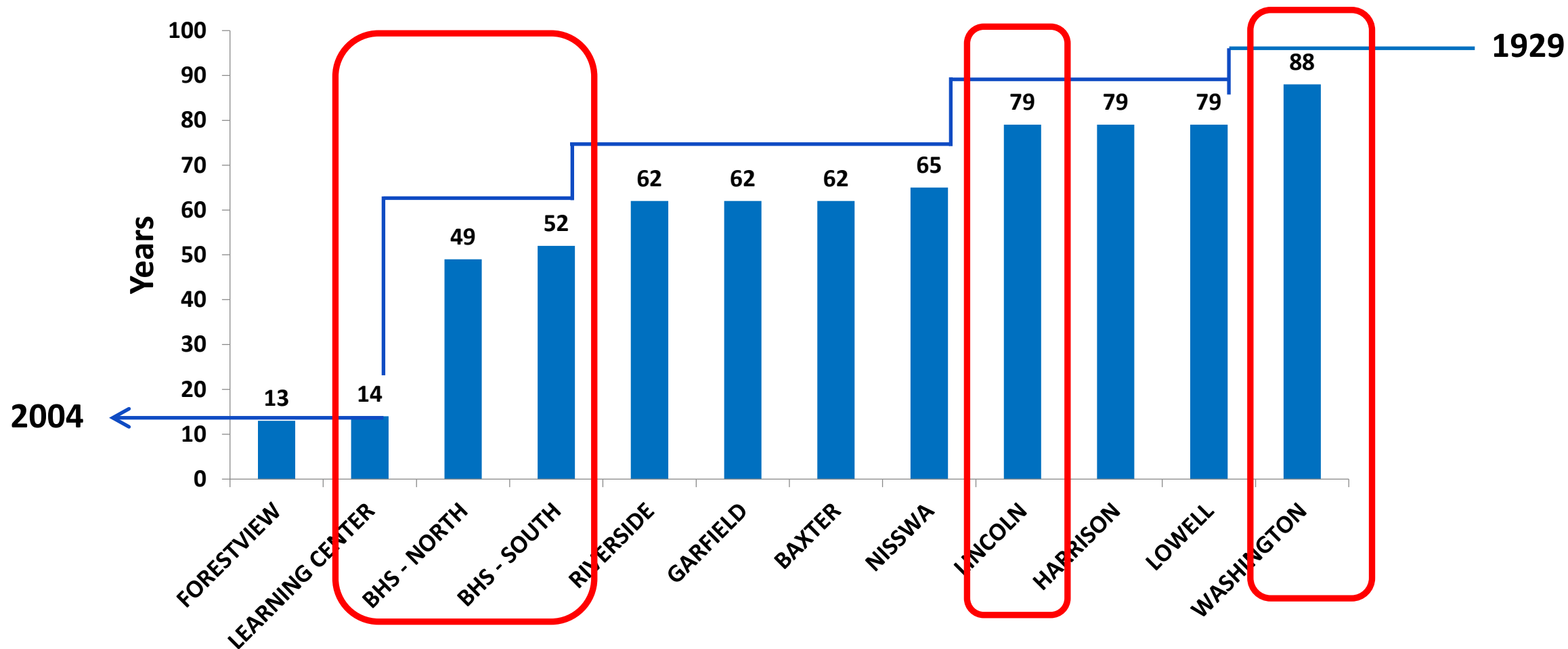
- Roofs
- Windows
- Doors
- Parking Lots
- Boilers
- Mechanical and Electrical Systems
- Flooring
- Food Service Equipment
- Americans with Disabilities (ADA)





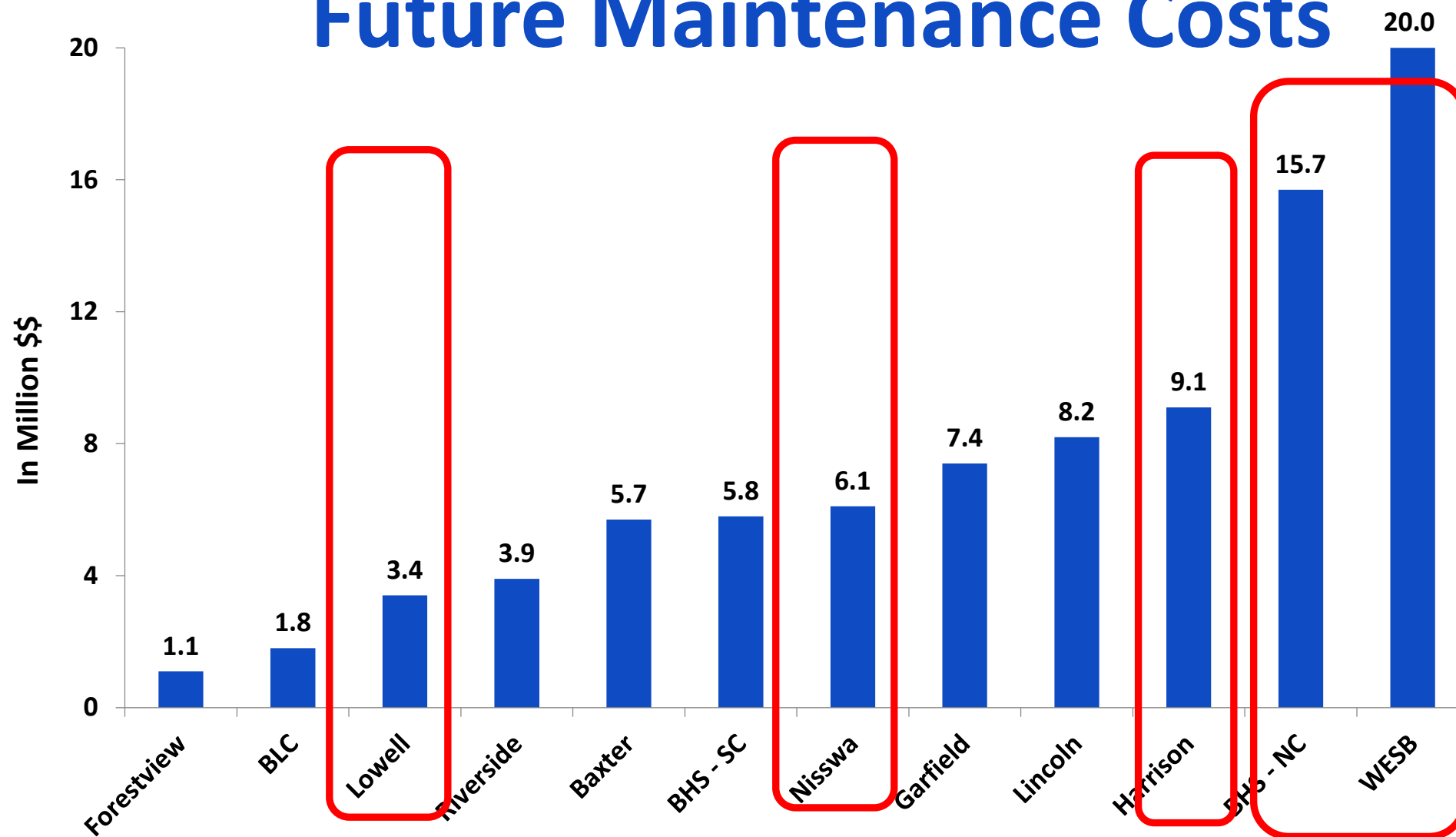
# Age of Schools

FY '17 MDE Building  
Age Report



Average Age of Brainerd Secondary School Facilities= 56.4 years

# Future Maintenance Costs



Comprehensive  
Long Range  
Facilities Plan

Estimated Future Maintenance Cost = \$51.5 Million

# District Comprehensive Long Range Facility Plan

## Shaped and Enhanced: Site Strategies *Brainerd Secondary Schools*





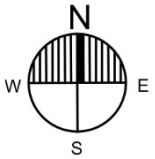
**BAXTER ELEMENTARY**

EC (WASHINGTON)  
EC (BRainerd LEARNING CENTER)  
+ GROWTH

**BRainerd LEARNING CENTER**

MIDDLE SCHOOL ALTERNATIVE PROGRAM  
ALTERNATIVE EDUCATION CENTER  
+ GROWTH

BHS  
Option 1

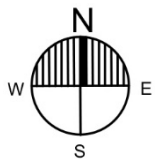




**BAXTER ELEMENTARY**  
LINCOLN EDUCATION CENTER

**BRAINERD LEARNING CENTER**  
EXISTING EC  
EC (WASHINGTON)

# BHS Option 2





# When Rightsized/Renovated/New Facilities are Constructed

- Implement collaborative based learning (21<sup>st</sup> Century)
- Implement small group individualized instruction as needed
- Implement professional learning communities for teacher collaboration (teacher engagement and customized student programs)
- Better serve specialized learning needs for all students
- Promote Uniform Standards and Equity



# When Rightsized/Renovated/New Facilities are Constructed

- Create commons spaces to allow for student, staff and community collaboration
- Facilities Designed with flexibility to adjust to changing learning and teaching dynamics
- Integrate technology enrichment across district
- Create and promote school and community brand and pride



# Potential Additional Surveys and Investments



## Scientific Public Survey – Todd Rapp

**A well-constructed scientific survey is an important tool in your effort to gather accurate input from your community.**

# Surveys Form Your Strategy

## Strengths

- **Scientific**
- **Communitywide**
- **Able To Be Parsed**
- **Accurate Feedback**

## Key Findings

- **District Benchmarks**
- **Project Attributes**
- **Intensity And Flexibility of Support/Opposition**
- **Ideal Price Point**
- **Positive/Negative Messaging**
- **Effective Messengers**

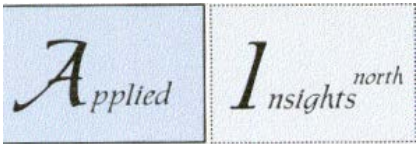
# Survey Design

- Start:** September 20<sup>th</sup>
- Results:** Second week in October
- Scope:** 400 sample, 85 questions, 26-28 minutes
- Cost:** \$18,000
- Add-On:** 15-20 question web survey that any resident can take

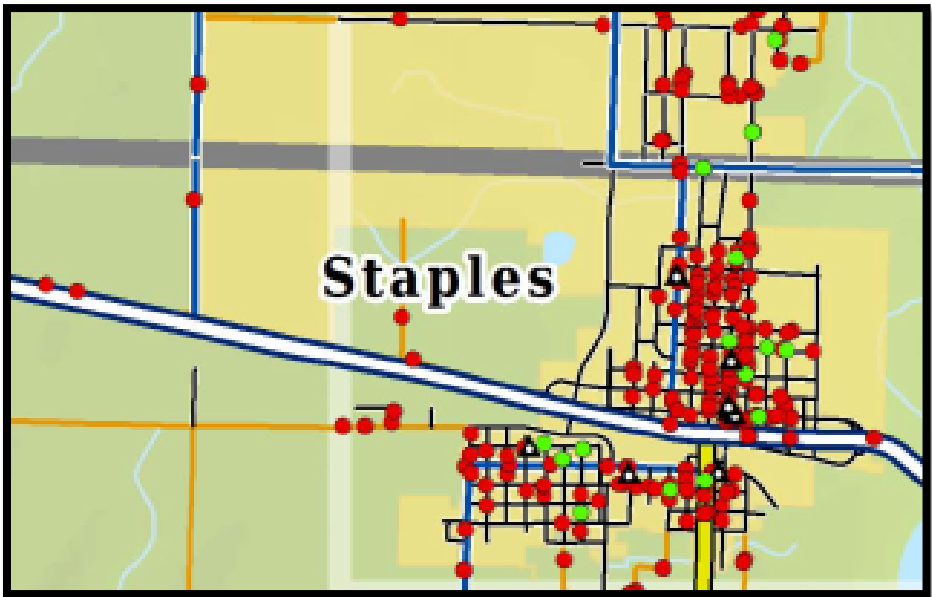
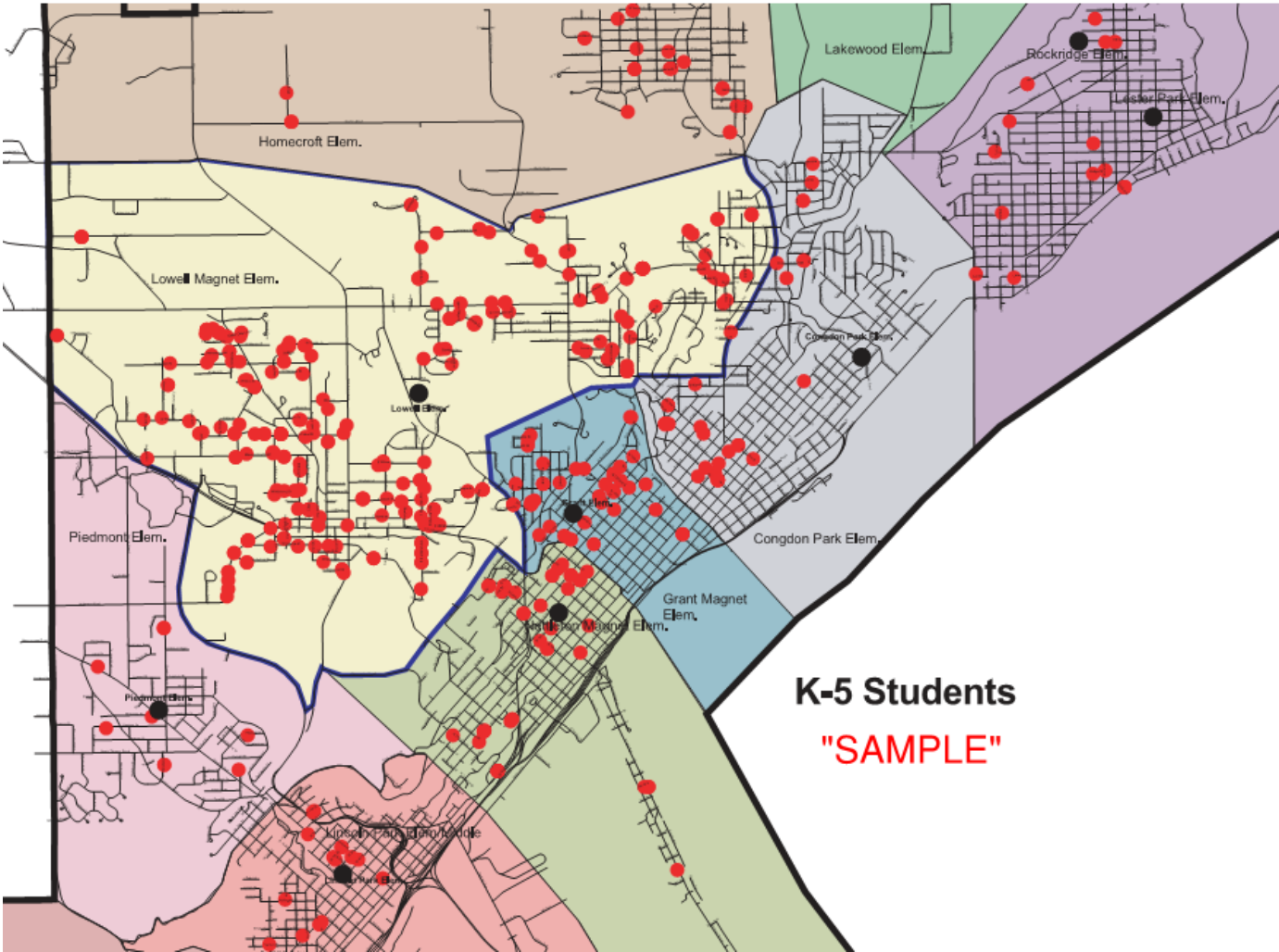


## G.I.S. Student Mapping – Dave Bergeron/Kevin Wormuth

- GIS (Geographic Information System)
- District's student address data converted/inputted into GIS Software
- Each student is then represented as a “Dot” on detailed map
- Assist District with placement of neighborhood schools based where students live
- Provides confidence in planning



# GIS Student “Sample” Map



# Mapping Design

**Start:** September

**Results:** Second week in October

**Scope:** All Current District Student Addresses

**Cost:** \$11,900



# Architectural Renderings of Facilities



Crosslake Community School  
Design Concepts



Thompson Public School  
Design Concepts

---

**Scope:** Floor plan and exterior 3D rendering for each building

**Cost:** \$7,500 per building

# Potential Additional Surveys and Investments

Update Student Enrollment Information From 2015 Information

Estimated Cost = \$7,000-\$12,000

# Role of Board and Experiences that Lead to a Successful Referendum



# Where Do We Go from Here?

## August 15th

- School Board Information and Strategic Direction
- Approval of Assessments to Gain Additional Information

## Mid/Late September (Possible Board Retreat)

- Refinement of Improvement Options with High Level Budget Estimates
- Preliminary Financial Approach Outlined
- Scientific Survey Conducted – Mid September
- Internal Stakeholder Listening Sessions – Strategic Direction  
Communication to Staffs
- Internal On-Line Survey – Mid September

## Mid/Late October

- Board Review of Refined Plan Options
- Review of Scientific Survey Results
- Review of Internal Listening Sessions and On-Line Survey
- Review of Plan Funding Approach

## Early-Mid November

- Board Approval of Plan
- Submit Review and Comment
- Begin Referendum Process

## Potential Public Referendum Dates

February 13, 2018

April 10, 2018



# Thank You!

Questions, Discussion